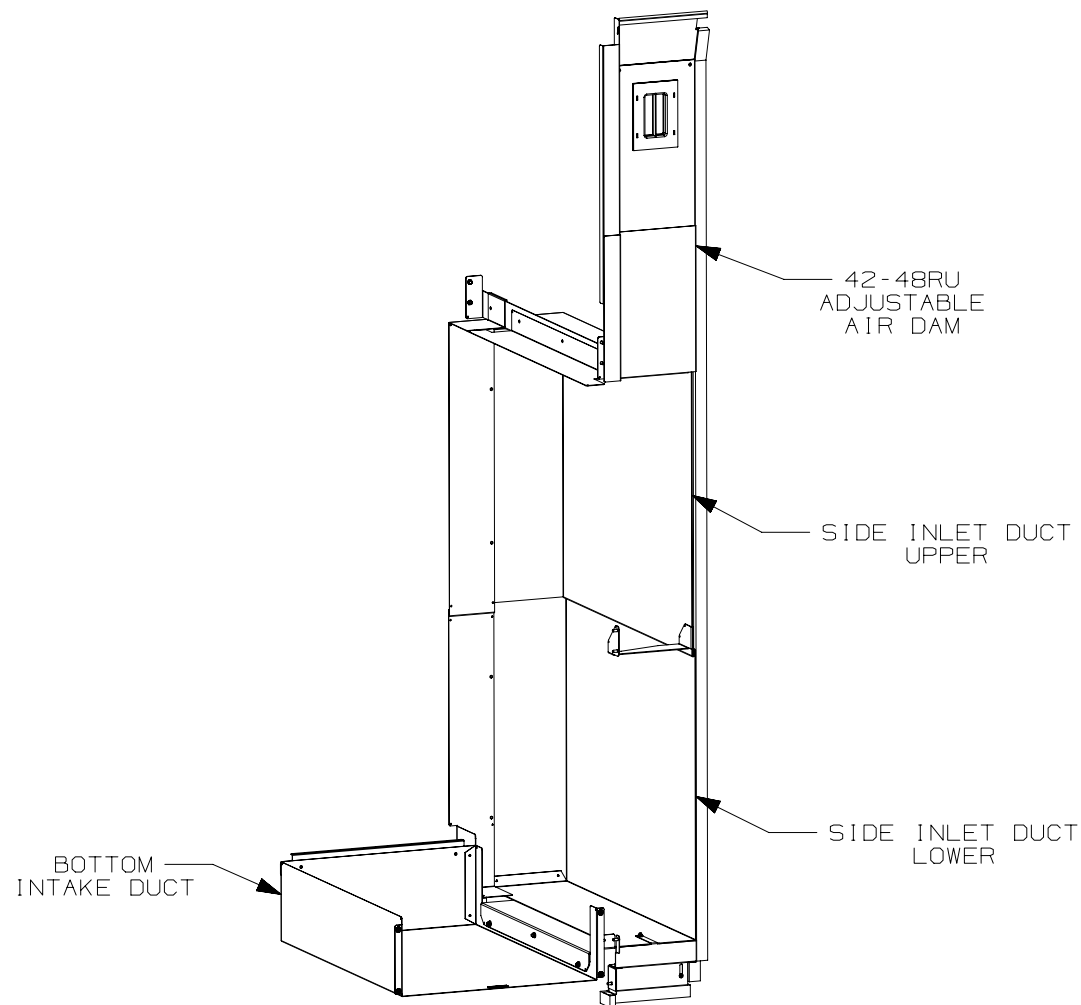


THIS COPY IS PROVIDED ON A RESTRICTED BASIS AND IS NOT TO BE USED IN ANY WAY DETRIMENTAL TO THE INTERESTS OF PANDUIT CORP.


PANDUIT PART NO	WEIGHT
DIRLC7018VP4248	43.09 Kgs/EA 95 LBS/EA

NOTES:

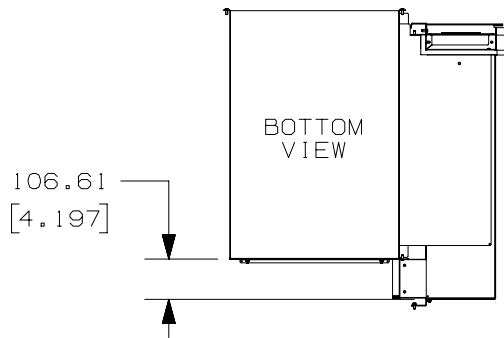
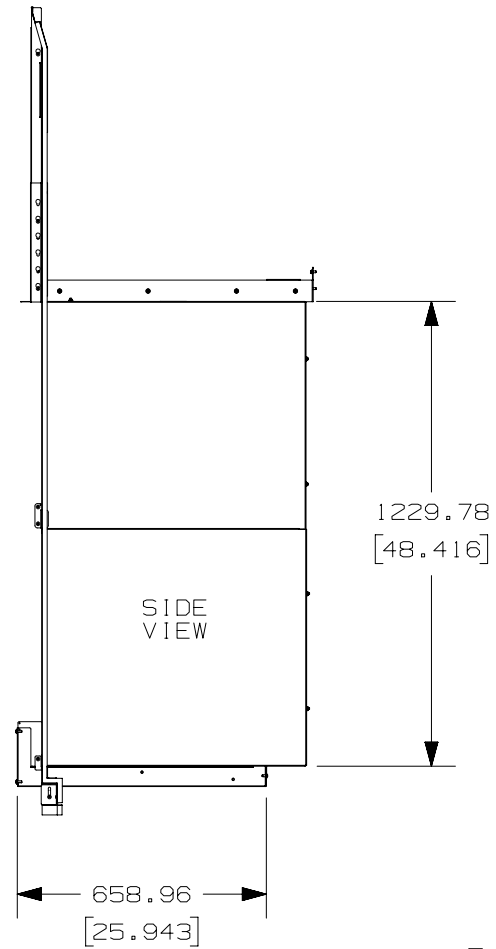
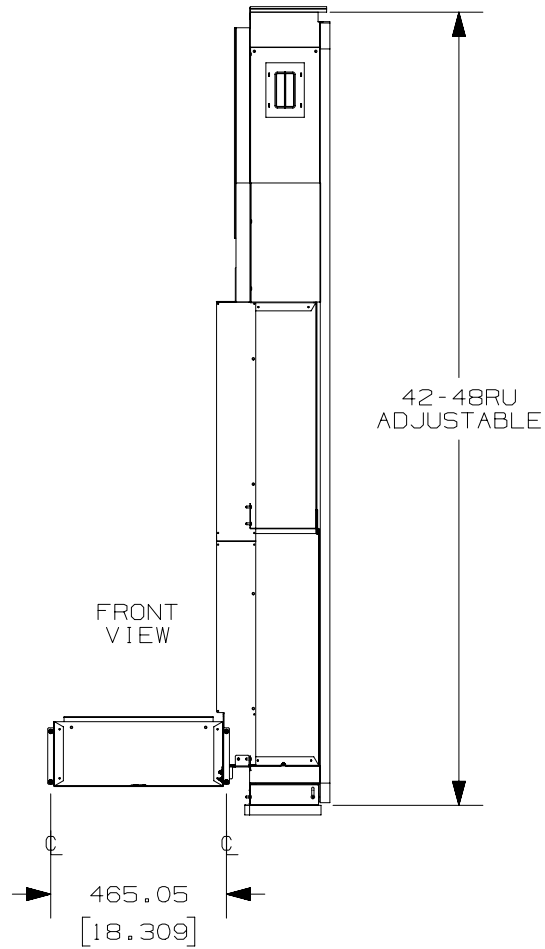
1. VISIT OUR ONLINE CATALOG AT WWW.PANDUIT.COM FOR A LIST OF CURRENT PARTS APPLICABLE FOR USE WITH THIS PRODUCT.
2. PRIMARY DIMENSIONS ARE IN MILLIMETERS (mm). DIMENSIONS IN PARENTHESES ARE IN INCHES (IN).
3. INLET DUCT TO BE USED WITH CISCO 7018 SWITCH.




E-RAIL DEPTH MUST BE 657.76mm
25.896in

							TITLE INLET DUCT W/42-48RU AIR DAMS ON RIGHT SIDE ONLY FOR CISCO 7018 SWITCH IN 1000mm WIDE N-TYPE CABINET (DIRLC7018VP4248) CUSTOMER DRAWING					
							ITEM REVISION NAME 12V360AN/00					
							DATASET FILE NAME 12V360AN_DC/00A					
										MATERIAL: N/A		
										DRAWING NUMBER: 12V360AN		
00A	10/07/2013	TGO			RELEASED					12V360AN		
REV	DATE	BY	CHK	APR	DESCRIPTION	ECN	DRAWN BY TGO	DATE 10/07/2013	CHK	SCALE N/A	SHT 1 OF 2	SIZE A

THIS COPY IS PROVIDED ON A RESTRICTED BASIS AND IS NOT TO BE USED IN ANY WAY DETRIMENTAL TO THE INTERESTS OF PANDUIT CORP.



E-RAIL DEPTH MUST BE 657.76mm
25.896in

TITLE					
INLET DUCT W/42-48RU AIR DAMS ON RIGHT SIDE ONLY FOR CISCO 7018 SWITCH IN 1000mm WIDE N-TYPE CABINET (DIRLC7018VP4248) CUSTOMER DRAWING					
ITEM REVISION NAME					
12V360AN/00					
DATASET FILE NAME			MATERIAL: N/A		
12V360AN_DC/00A					
			DRAWING NUMBER:		
			12V360AN		
DRAWN BY	DATE	CHK	SCALE		SIZE
TGO	10/07/2013		N/A	SHT 2 OF 2	A