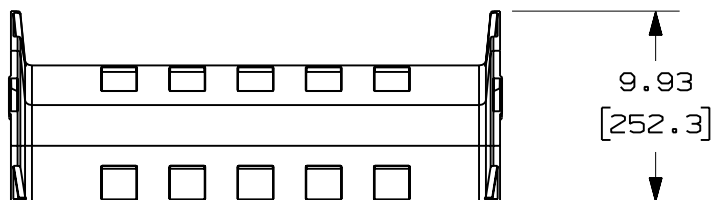


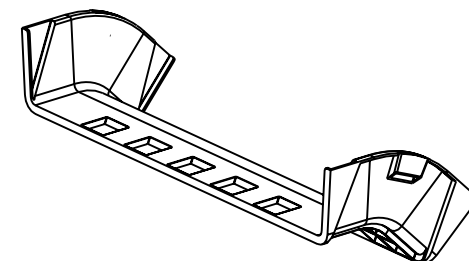
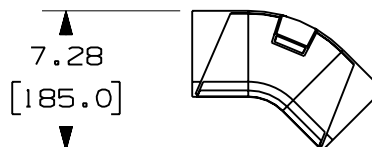
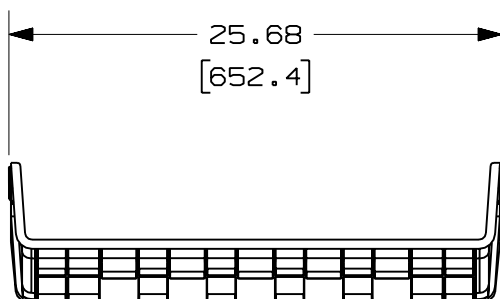
THIS COPY IS PROVIDED ON A RESTRICTED BASIS AND IS NOT TO BE USED IN ANY WAY DETRIMENTAL TO THE INTERESTS OF PANDUIT CORP.

PANDUIT PART NUMBER	WEIGHT
FROV4524X4	2.12 LB/EACH (962g/EACH)



NOTES:

1. SEE CURRENT CATALOG FOR ADDITIONAL PART SUFFIXES TO INDICATE COLOR AND/OR PACKAGE QUANTITY.
2. THE FIBERRUNNER 24x4 OUTSIDE VERTICAL 45° ANGLE FITTING IS DESIGNED WITH A MINIMUM 3" (76.2) BEND RADIUS TO PROTECT FIBER OPTIC CABLES.
3. DIMENSIONS IN PARENTHESES ARE IN METRIC.



ENG. REF.: D39701CP\_DC/00 FROV4524X4

CAD FILENAME/LAYERS		FROV4524X4 .pdf	
PANDUIT		CORP TINLEY PARK, ILLINOIS	
FIBERRUNNER 24x4 OUTSIDE VERTICAL 45° ANGLE FITTING (FROV4524X4) CUSTOMER DRAWING			
UNLESS OTHERWISE SPECIFIED, DIMENSIONAL TOLERANCES ARE: (.X) ± (.XX) ± .03 (.8) (.XXX) ± ANGLES ±		UNLESS OTHERWISE SPECIFIED, ALL DIMENSIONS ARE GIVEN IN INCHES, THIRD ANGLE PROJECTION.	
DRAWN BY MSO	MAT'L:  ABS	SCALE NONE	
DATE 10-21-08		DRAWING NO. 39701-24	DWG A
CHK'D SL		SIZE	

R	10-21-08	MSO	SL	RELEASED TO PRODUCTION	39701-24	RN	RN		
REV	DATE	BY	CHK	DESCRIPTION	ECN	- R	CUST	SUP	GMB