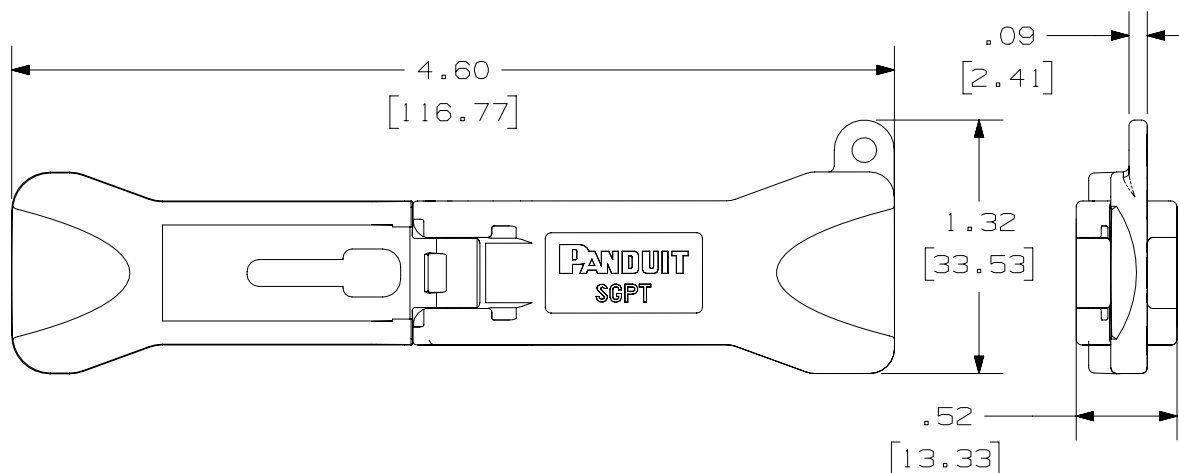


2

1

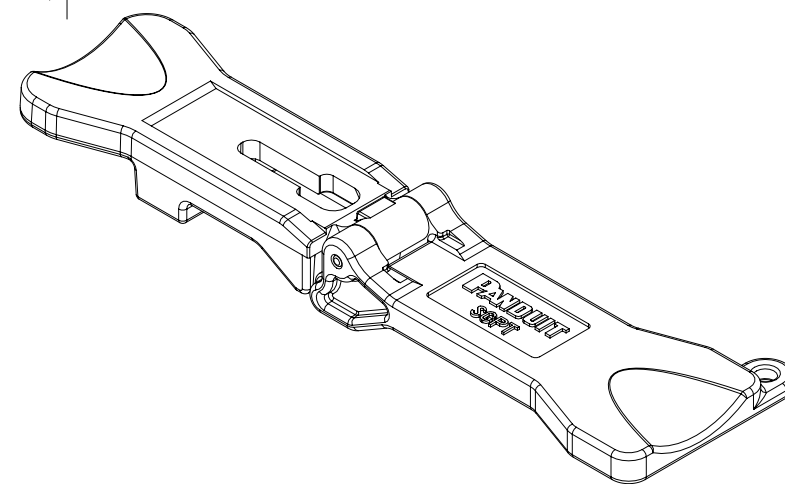
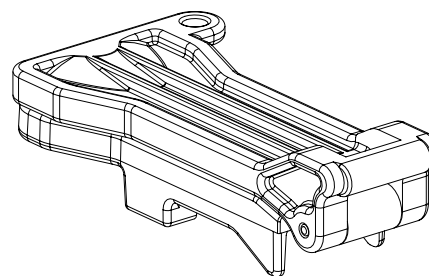
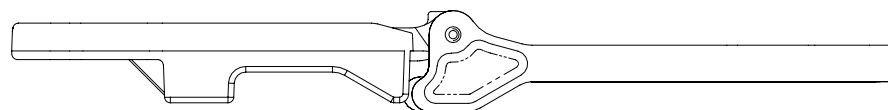
THIS COPY IS PROVIDED ON A RESTRICTED BASIS AND IS NOT TO BE USED IN ANY WAY DETRIMENTAL TO THE INTERESTS OF PANDUIT CORP.




PANDUIT PART#	WEIGHT
SGPT	.28 LB/10 PCS (127 g/10 PCS)

NOTES:

1. ASSEMBLY TOOL FOR SMALL GAUGE (28/30 AWG) CAT5E AND CAT6 PLUGS.
2. SEE CATALOG FOR COMPLETE LIST OF SMALL GAUGE PRODUCTS.
3. DIMENSIONS IN BRACKETS ARE IN METRIC.
4. MATERIAL: 20% GLASS FILLED NYLON.



PART NUMBER		SGPT	
TITLE		SMALL GAUGE (28/30AWG) MODULAR PLUG ASSEMBLY TOOL	
ITEM REVISION NAME		CUSTOMER DRAWING	
DATASET FILE NAME		11M297AB-00	
UNLESS OTHERWISE SPECIFIED, DIMENSIONAL TOLERANCES ARE: IN [ mm ]			
.X ±		.XXX ± .010 [ .3 ]	
.XX ± .03 [ .8 ]		ANGLES ±	
DRAWN BY		THIRD ANGLE PROJECTION	
DATE		DRAWING NUMBER:	
LZ		11M297AB-03	
11-30-11		SHT 1 OF 1	
CHK		SIZE	
LZ		A	
SCALE			
FULL			

1	4-30-14	BJN	JSP	EJH	REVISED & REDRAWN PREVIOUS REVISIONS REMVD FOR CLARITY	11M297AB-03
REV	DATE	BY	CHK	APR	DESCRIPTION	ECN

2

1

D10100DA/14