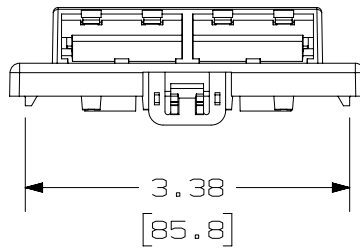
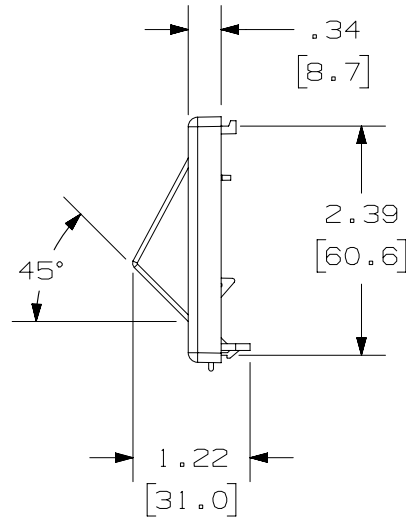
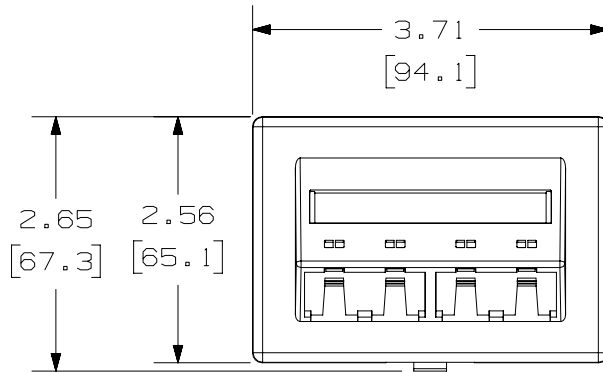


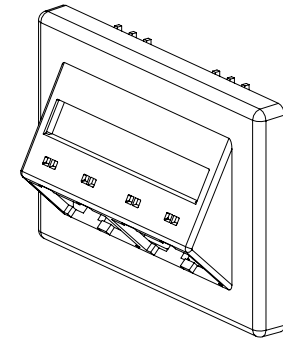
THIS COPY IS PROVIDED ON A RESTRICTED BASIS AND IS NOT TO BE USED IN ANY WAY DETRIMENTAL TO THE INTERESTS OF PANDUIT CORP.



PANDUIT P/N	WEIGHT
CFFPEBSL4**	.40 LB/10 PCS (182.1 g/10 PCS)

NOTES:

1. SEE CURRENT CATALOG FOR ADDITIONAL PART NUMBER SUFFIXES TO INDICATE COLOR AND OR PACKAGE QUANTITY.
2. SEE CATALOG FOR COMPLETE LIST OF PARTS APPLICABLE FOR USE WITH THIS PART.
3. DIMENSIONS IN [] ARE IN METRIC.
4. CFFPEBSL4** INCLUDES:
 - 1- LABEL
 - 1- LABEL COVER
 - 1- FACEPLATE
5. FACEPLATE SNAPS INTO A RANGE OF FURNITURE OPENINGS:
 - HEIGHT: 2.37" [60.2] TO 2.38" [60.6]
 - WIDTH: 3.42" [86.9] TO 3.44" [87.4]
 - MAX. MATERIAL THICKNESS: .050" [1.3]



PART NUMBER		CFFPEBSL4**	
TITLE		MINI-COM 4 POSITION SLOPED FURNITURE FACEPLATE FOR HERMAN MILLER BELTLINE SERIES	
ITEM REVISION NAME		CUSTOMER DRAWING	
DATASET FILE NAME		M00795BA_DC/08D	
UNLESS OTHERWISE SPECIFIED, DIMENSIONAL TOLERANCES ARE: IN [mm]		MATERIAL: ABS	
.X ± .XX ± .03 [.8]		.XXX ± .010 [.3] ANGLES ±	
THIRD ANGLE PROJECTION		DRAWING NUMBER: 00795-02	
DRAWN BY JSP	DATE 1-28-00	CHK SEZ	SCALE NONE
SHT 1 OF 1		SIZE A	

3	3/18/14	JSP	REFR	MMR	REVISED AND REDRAWN, PREVIOUS REVISIONS HAVE BEEN OMITTED.	00795-02
REV	DATE	BY	CHK	APR	DESCRIPTION	ECN