

Rugged NVR Appliance w/ 4 x PoE

The CIRRUS CR16T is a rugged in-vehicle NVR appliance with built-in 4 PoE ports designed for direct management of four (4) PoE IP cameras. Features such as vibration resistance, I/O ports, ignition control and 3G wireless networking make integration into vehicle system projects fast and easy.

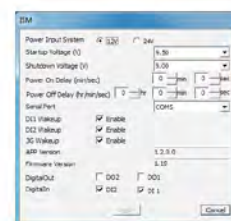


Features

- Fanless Design / Corrugated Aluminum
- 4 PoE ports (IEEE 802.3af)
- MIL-STD-810G Vibration & Shock Compliance
- Vehicle Ignition Power Management
- WiFi / 3G Wireless Options
- Built-in GPS Receiver w/ Antenna
- Software and Hardware Watchdogs
- Web Based Administrative Interface
- Quick Setup Wizard Simplifies Initial System Setup
- Windows Embedded Standard 7 Operating System

Power Ignition Control

A must-have for vehicle computing, the **Power Ignition Control** feature plays a key role in controlling the device's power function. This feature detects the ignition signal status and allows users to control the on/off delay time setting through the **Ignition System Manager (ISM)** software utility.



Removable HDD/SSD Drive Bay

The CR16T supports a removable HDD/SSD drive bay for field-site fast swaps and flexible expansion capability.



MIL-STD-810G

The CR16T is compliant with MIL-STD-810G vibration and shock testing. A suspension kit is also included to assist in vibration resistance. These devices are ruggedized and outfitted with industrial components (HDD/SSD, CF, Memory) to support a wide range of environmental conditions.



Vehicle Standards Certified



All IONODES in-vehicle appliances are designed to meet the requirements of the E-Mark Certification (E13).

Target Applications

- Bus Video Recording Systems
- Vehicle Digital Signage Solutions
- Advanced Vehicle Applications

Quick Setup Wizard

All CIRRUS IP recording appliances are delivered with our unique **Quick Setup Wizard**, pre-loaded and ready to go. The Quick Setup Wizard allows you to select, at first boot, which VMS software solution to deploy on your CIRRUS appliance.

