



### Professional Solutions - Unrivalled Value

Screen adapter and ceiling box assembly for mounting 37" to 63" flat panel screens. Continuous tilt of 20° forward with 360° rotation. Makes a secure installation quick and easy, simply hang the screen and turn the pre-assembled securing screws to lock in place. Compatible with all 1.5" NPT threaded pipe.

37" - 63" / 94cm-160cm

200 LB / 91 KG

#### Functional Specifications

Tilt: +20°/-0°  
Rotation: 360°

Mounting Surfaces: 1.5" NPT Threaded connection.

Max Mounting Pattern:  
723mm (28.5") width  
501mm (19.8") height

Load Capacity: 200 LB / 91 KG

Warranty: Limited 10 Years

#### ■ Various Screen Sizes

Fits most 37" to 63" flat panel screens weighing 200lb or less.

#### ■ Multi-angle Positioning

Up to 20° of continuous tilt and 360° rotation.

#### ■ Commercial Grade

Ideal for commercial and retail settings.

#### ■ Easy Installation

Pre-assembled securing screw makes installation fast and easy.

#### ■ Standard Interface

Mounts to any 1.5" NPT threaded pipe.

#### ■ Universal Design

Works with any hole pattern up to 723mm (28.5") x 501mm (19.8") in height.

#### ■ Included Hardware

Pre-sorted hardware pack for easy component selection and installation (hardware for installation to wood studs or concrete surfaces included).

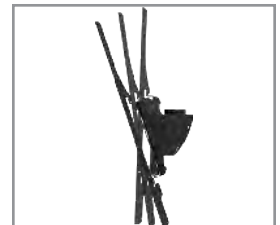
#### Universal Design

Fits any hole pattern up to 723x501mm (28.5x19.8"). Max VESA hole pattern 700x500mm.



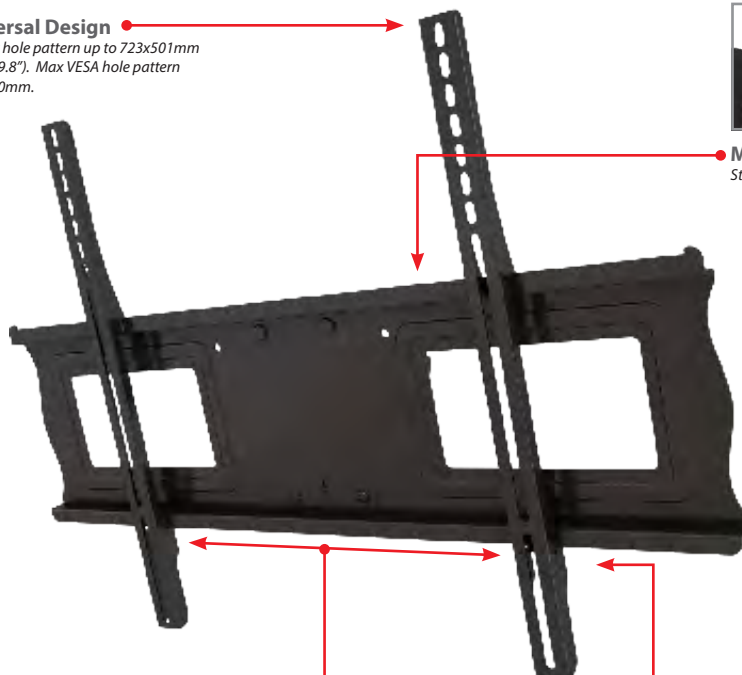
#### Mounting Surface

Standard 1.5" NPT threaded connection.



#### Tilt

0 to +20° tilt for optimal viewing angles.



#### Lateral Adjustment

Lateral adjustment functionality for positioning TV in the right spot on the wall. Extended verticals allows for a wider screen coverage within the size range.

#### Pre-Installed Securing Screws

Easy hook and secure installation and pre-assembled securing screw makes installation fast and easy.



#### Mounting Hardware

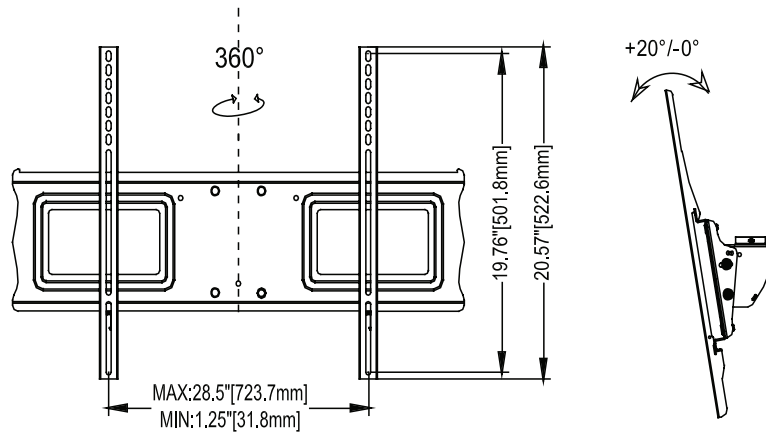
Complete set of screen mounting hardware, labeled for ease of use and ready to go.



# Single Flat Panel Ceiling Mount

For 37" to 63" (94-160cm) LCD and Plasma TV's

**C63 (BLACK)**




## Product Specifications

PRODUCT WEIGHT	LOAD CAPACITY	COLORS	FINISH
14.1 lb (6.4 Kg)	200lb (91kg)	Black	Scratch resistant powder coating

## Package Specifications

PACKAGE SIZE (WxHxD)	SHIP WEIGHT	UPC CODE	PACKAGE CONTENTS
38" x 11" x 6" (965x267x135mm)	15 lb (6.8 Kg)	C63 (Black) 0815885010897	Mount, screen mounting hardware, product manual.

## Mounting Interface

	Universal		VESA											
	Min	Max	W	75mm	100mm	200mm	200mm	300mm	300mm	400mm	400mm	400mm	600mm	600mm
	W	31mm	723mm	X	X	X	X	X	X	X	X	X	X	X
	H	31mm	501mm	H	75mm	100mm	100mm	200mm	200mm	300mm	200mm	300mm	400mm	200mm

## Accessories

### Suspended Ceiling Adapters



CAS1W

For mounting above a false ceiling tile. 13" of lateral shift for fast project adjustment. Compatible with all 1.5" NPT threaded pipe.



CAS2W

Replaces a standard 2' x 2' grid. 13" of lateral shift for fast project adjustment. Compatible with all 1.5" NPT threaded pipe.

### Structural Ceiling Adapters



CA1

Wood Single Joist / Concrete



CA2

Wood 16" Double Joist / Concrete



CA4

General Purpose 4x4"



CA8

General Purpose 8x8"

### Truss Ceiling Adapter



CAT3

Mounts to round, square and rectangular trusses from .75" up to 3" in diameter and is compatible with all 1.5" NPT threaded pipe.

### Vaulted Ceiling Adapter



CAV1

For installation on cathedral or vaulted ceilings. Adjusts up to 94° and is compatible with all 1.5" NPT threaded pipe.

### Unistrut Ceiling Adapters



CAU1

Bracket and hardware for mounting to single 1-5/8"x1-5/8" Unistrut.



CAU4

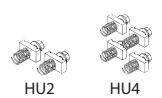
Bracket and hardware (4x4) for mounting to standard 1-5/8"x1-5/8" dual channels spaced on 2.25" centers.



CAU8

Bracket and hardware (8x8) for mounting to standard 1-5/8"x1-5/8" dual channels spaced on 6" centers.

### Unistrut Bolts



HU2 (2 Bolts) HU4 (4 Bolts)

3/8" bolts and spring nuts for mounting ceiling brackets to standard 1-5/8"x1-5/8".

### Fixed Columns

Static ceiling columns for use with all ceiling adapters using standard 1.5" NPT interfaces. Connectors (sold separately) give ability to extend drop lengths by connecting two or more columns. Cable management with a completely open interior.



BLACK	DROP
E06	6"
E1	12"
E018	18"
E2	2'
E3	3'
E4	4'
E5	5'
E6	6'
E7	7'
E8	8'
E9	9'
E10	10'

### Adjustable Columns

Adjustable extension columns designed for use with all ceiling adapters using standard 1.5" NPT interfaces. Column allows for flexibility with quick 1" incremental drop length adjustments and cable management with a completely open interior. Connectors (sold separately) give ability to extend drop lengths by connecting two or more columns.



BLACK	DROP
EA0611	6"-11"
EA01218	12"-18"
EA01824	18"-24"
EA23	2'-3'
EA24	2'-4'
EA35	3'-5'
EA46	4'-6'
EA57	5'-7'
EA68	6'-8'
EA79	7'-9'
EA810	8'-10'
EA911	9'-11'
EA1012	10'-12'

Visit [crimsonav.com](http://crimsonav.com) to see the full line of vidamounts LCD/plasma, projector and TV/monitor mounts. © 2010 Crimson AV LLC. All rights reserved.