



GUIDE

AXIS Camera Station Operator Guide

Contents

<u>1</u>	<u>INTRODUCTION</u>	<u>3</u>
<u>2</u>	<u>LOG INTO THE SYSTEM</u>	<u>3</u>
	Step 1	3
	Step 2	3
<u>3</u>	<u>USE THE LIVE VIEW WORKSPACE.....</u>	<u>4</u>
	Overview of the Live View workspace	4
	Navigate between the different views	6
<u>4</u>	<u>USE THE PAN/TILT/ZOOM CONTROLS</u>	<u>7</u>
	Joystick.....	7
	Mouse	7
	Keyboard	8
<u>5</u>	<u>ACKNOWLEDGE AND EXPORT ALARMS</u>	<u>8</u>
	Alarms	8
	Acknowledge alarms	8
	Export alarms	9
<u>6</u>	<u>SEARCH, PLAYBACK AND EXPORT RECORDINGS</u>	<u>9</u>
	Search recordings	9
	Playback recording	11
	Export recording	12

1 Introduction

The following document describes how to use the main features of AXIS Camera Station. This guide will help you as a security guard or store manager to take full advantage of the relevant functionalities in Operator Mode.

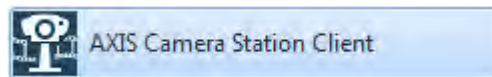
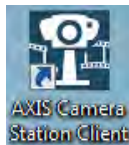
Note: In this guide we assume that the initial configuration has already been done by the system integrator. For more information regarding the configuration, please refer to the user manual available on <http://www.axis.com/global/en/products/axis-camera-station/support-and-documentation>

2 Log into the system

Step 1

Start AXIS Camera Station Client.

Click the **AXIS Camera Station Client** icon on your desktop or in the start menu:



Step 2

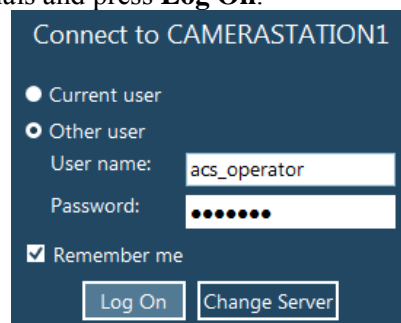
Connect to the AXIS Camera Station Server.

Depending on your setup, it could be the **current computer** or a **remote server**. Select the appropriate option in the startup page:



ACS connection page

If you need specific credentials, different from your Windows user account, uncheck **Log on as current user**. Enter your credentials and press **Log On**:



ACS login page

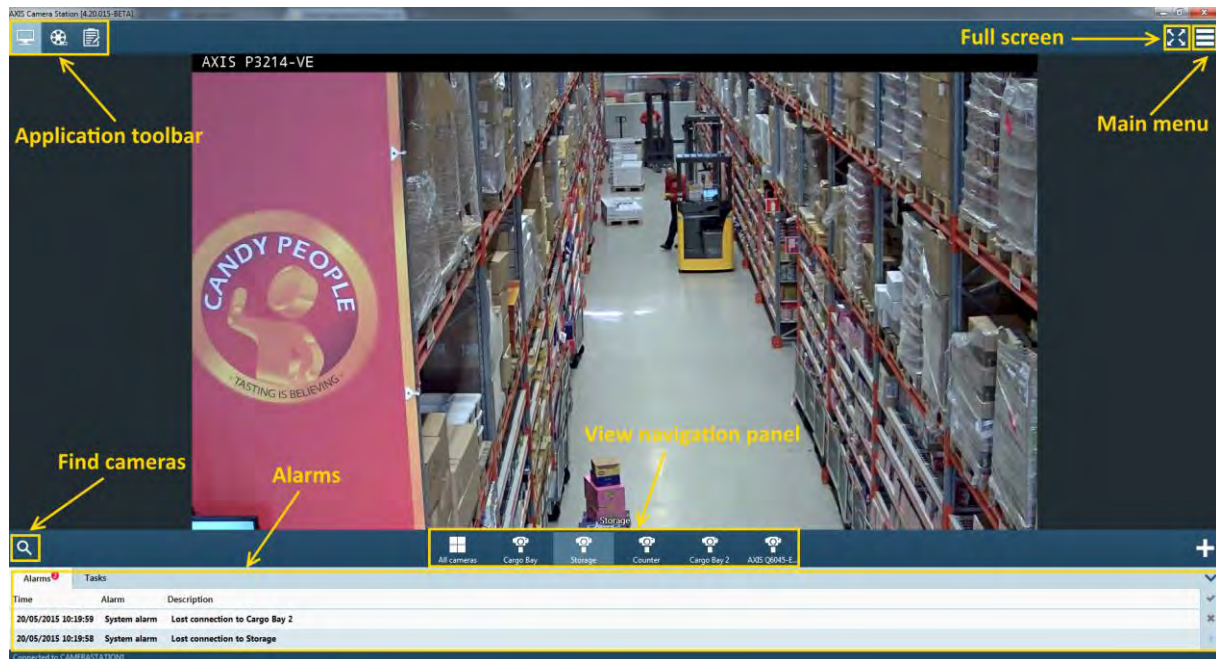
You should now be logged in to the AXIS Camera Station Server, ready to use the software.

3 Use the Live View workspace

Overview of the Live View workspace

The Live View workspace contains several elements:

- Application toolbar for global navigation and global actions
- The main menu
- The Full Screen button
- The “Find Camera” button
- The View Navigation Panel for switching between views
- The Alarms and Tasks Tabs



ACS in normal mode

The Full Screen mode in ACS is optimized for occasional monitoring and strives to make the occasional operator feel comfortable and confident that he's not changing the system configuration mistakenly. System configuration and application management that typically are not related to occasional monitoring are hidden in full screen mode and are only available in normal mode of ACS.

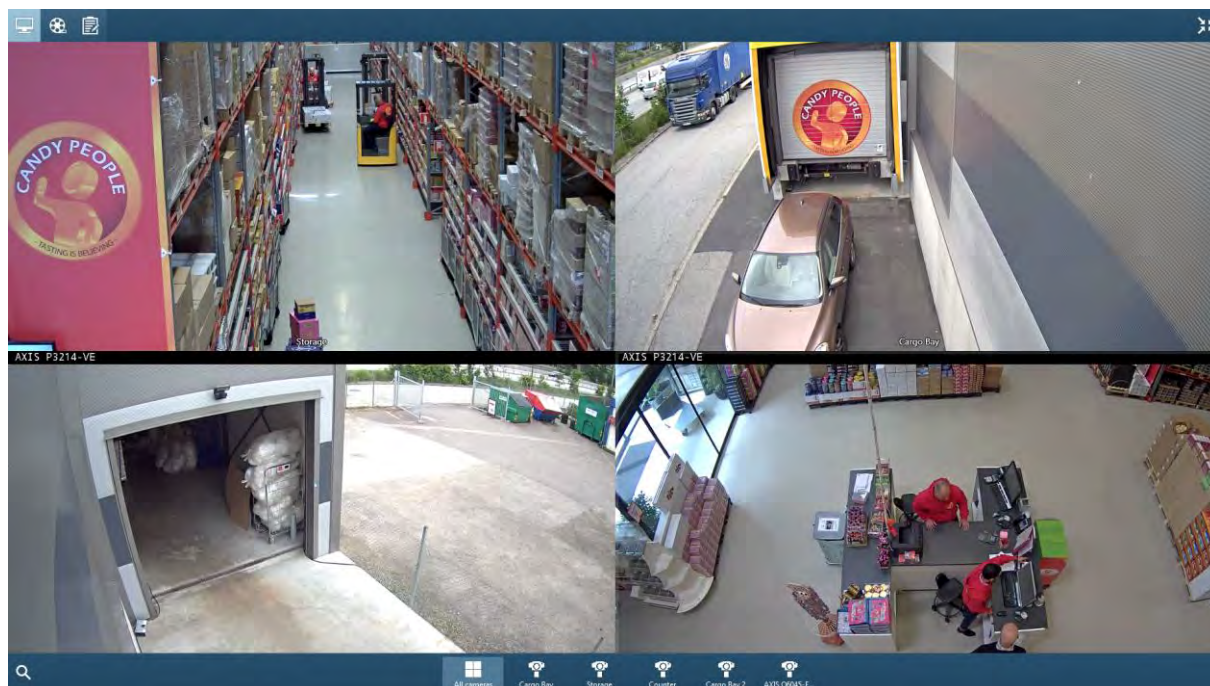
Full screen (Operator Mode) is enabled from button  located in the **Application Toolbar** or by pressing **F11**.

When in full screen, ACS uses the whole screen area and will always hide the following elements:

- ACS Title bar
- ACS Status bar
- Windows task bar
- Alarms and Tasks Tabs

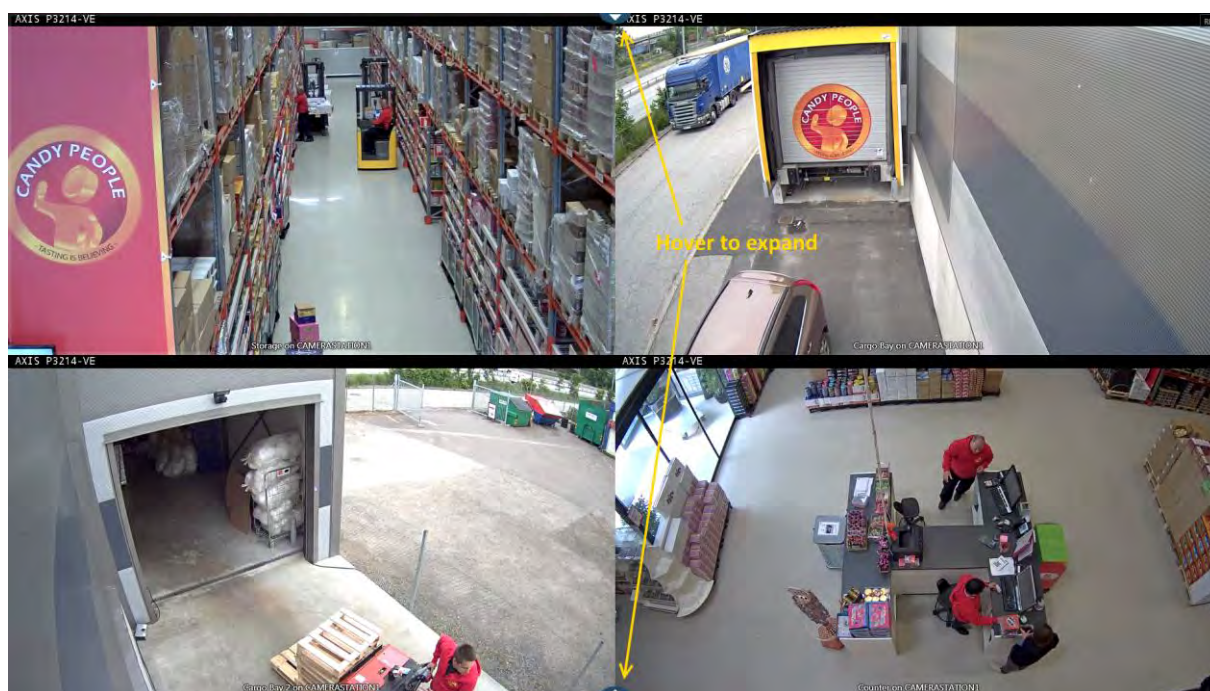
The following elements are only available when hovering over them:

- ACS application toolbar
- View navigation panel



ACS in Operator Mode (Full Screen)

Visual cues (arrow icons) indicate that there are panels in the top and bottom areas of the application in full screen mode.

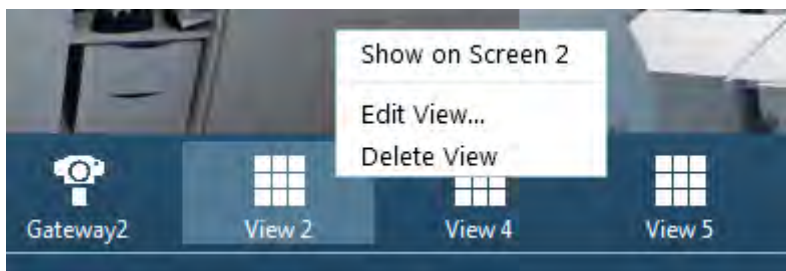


ACS in Operator Mode after the panels disappeared

Full Screen mode is available for the Live View, Recordings and Logs workspaces.

To exit Full Screen click , press **Esc** or **F11**

It is possible to open any split view in another monitor by right-clicking on the split view name and selecting “**Show on Screen X**”. You can also **Drag & Drop** the split view to the desired monitor.



Open split view in a Monitor window

Navigate between the different views

There are five different types of views in ACS:

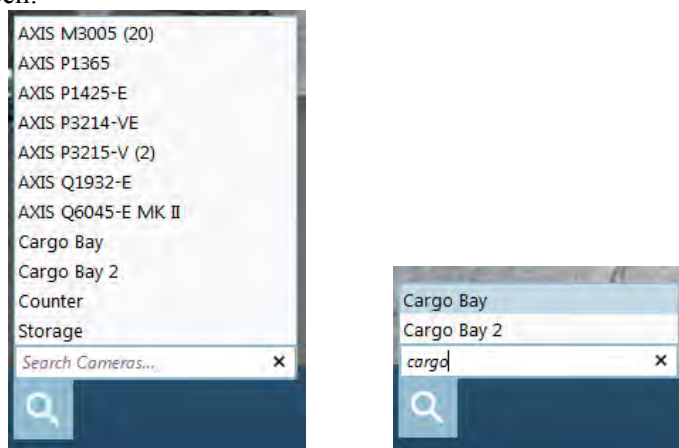


View navigation panel

- **Split view:** A split view displays multiple views in the same window.
- **Map:** A map is an imported image on which camera views, split views, sequences, web pages and other maps can be placed.
- **Camera View:** A camera view displays live video from one camera.
- **Sequence:** A sequence view automatically switches between included views. The dwell time, i.e. the number of seconds to show a view, before switching to the next, can be set individually for each view.
- **Webpage:** A web page view displays a page from the Internet or camera configuration.

To navigate between the different views, click on the view icon in the **View navigation panel**. You can also use the arrow keys once the **View navigation panel** is selected.

If you wish to display a camera which is not present in any view, use the **Find Camera** button at the bottom left of the screen:



Find Camera panel

You can click on any camera or start typing a camera name and press **Enter** to display it.

CTRL + F can be used to open the camera list. **Esc** will clear the search field or close the camera list

Tip: When viewing a split view, a double click in one of the split will display the camera in full screen. To go back to the split view, double click again on the image or press **Backspace**.

4 Use the Pan/Tilt/Zoom controls

AXIS Camera Station allows you to perform Pan/Tilt/Zoom commands with a joystick, mouse or keyboard.

Joystick

If a joystick is available for PTZ control, simply plug in and start using it in AXIS Camera Station.

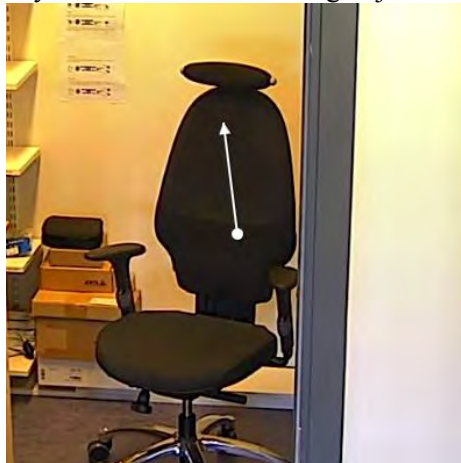
Note: *AXIS Camera Station Client needs to be restarted if the joystick is plugged in when already started.*

To pan/tilt with the joystick, simply tilt the joystick in the desired direction. To zoom in, turn the joystick clockwise. To zoom out, turn the joystick counter clockwise. The more you tilt/turn the joystick, the faster the movement will be.

Mouse

There are two ways to pan/tilt with the mouse:

When located near the center, the arrow will indicate a continuous pan/tilt movement. Simply click and hold the mouse button to start moving the camera. The longer the arrow is, the faster the movement will be. This is typically used to follow a moving object.



Continuous pan/tilt movement

When located further from the center, ACS will use a **center mode** approach, meaning that a click in the image will center the camera on that point. This is useful when you want to center the image on a specific object.



Center mode

To zoom in/out with the mouse, scroll in/out with the wheel mouse.

You can also zoom in by drawing a **Zoom Area** with the right/left button of the mouse. This is useful when you want to zoom on a specific object.



Zoom Area

Keyboard

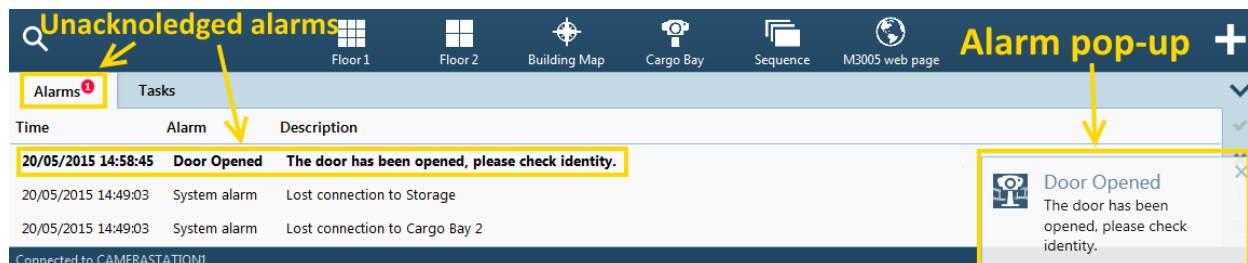
The keyboard can be used to pan/tilt by pressing **CTRL + ARROW KEY**. It can also be used to zoom in and out by pressing **CTRL + (+)** and **CTRL + (-)**. Press **CTRL + 0** to zoom out completely.

5 Acknowledge and export alarms

Alarms

Your installation might be using alarms when a specific event occurs, for example Motion Detection, Access Control events, I/O port Active...

Alarms are displayed in the **Alarms** tab at the bottom of the screen. A pop-up appears in the bottom-right corner for a few seconds and the entry is then added to the alarm list.



Alarms are shown in the status bar

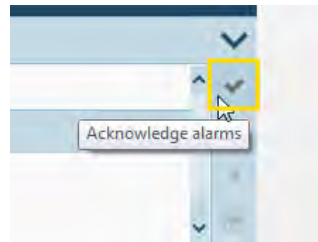
Note: The Status bar can be hidden by pressing the arrow shown below:




Hide status bar

Acknowledge alarms

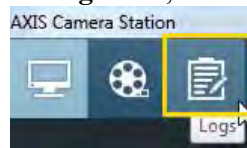
To acknowledge an alarm, press the button located on the right side:



Acknowledge alarms

You can also click the  button to delete/hide the selected alarm entries. Only the 100 last unacknowledged alarms are displayed.

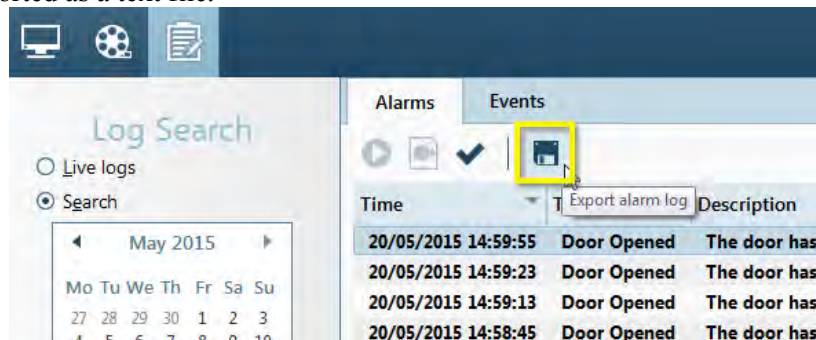
Alarms can also be searched from the **Audit log** menu, accessible from the **Application Toolbar**:



Audit log menu

Export alarms

This menu also allows you to export the displayed alarms by clicking the button shown below. The alarm log is exported as a text file.

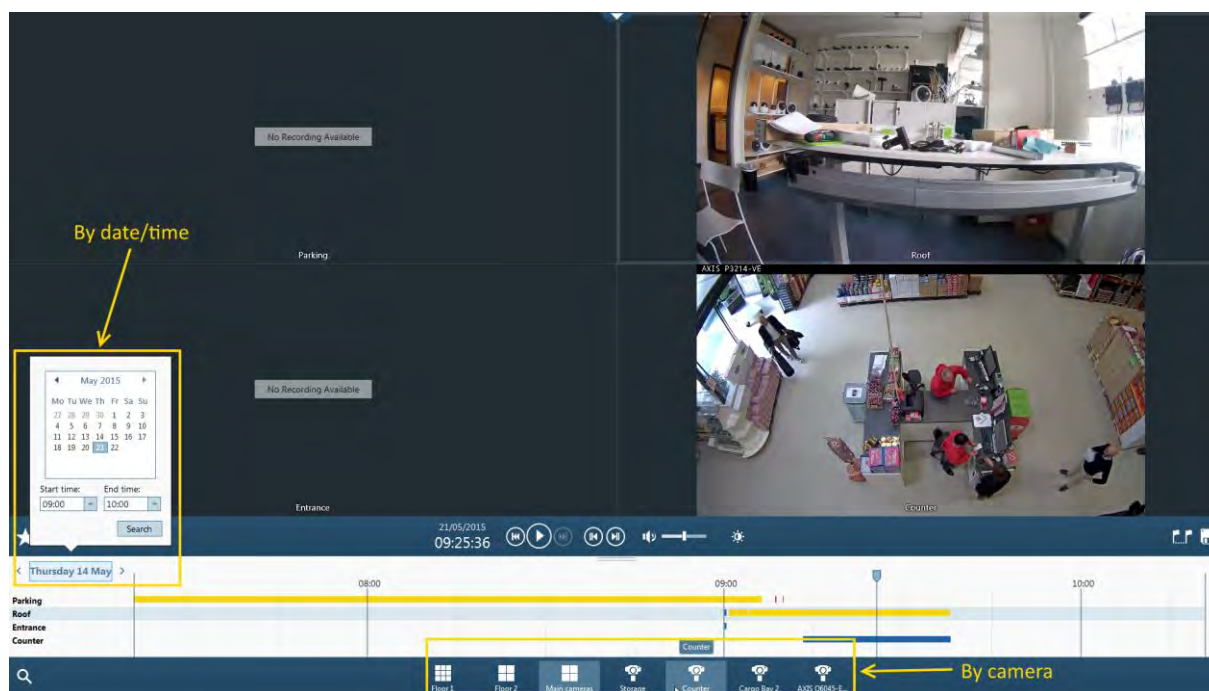


Export alarms

6 Search, Playback and export recordings

Search recordings

Recordings can be searched from the recording workspace. You can filter by entering a specific date or time and also limit the search to a specific camera or split view. The search results will be shown in the timeline.

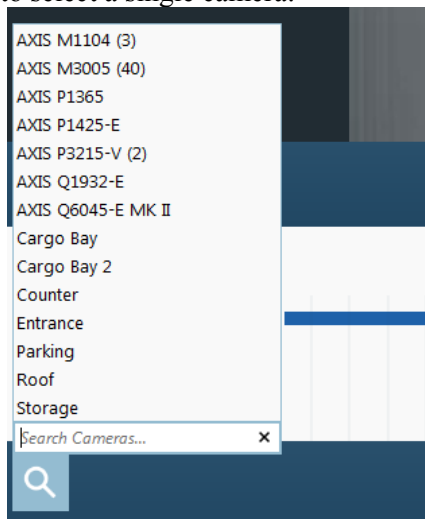


Playback workspace

Recordings are color coded:


- **Red** - Motion detection or rule triggered recording
- **Yellow** - Manual recording (triggered by the user)
- **Blue** - Continuous recording
- **Green** - Failover recording (when the camera is not accessible and recording is done on the SD card)

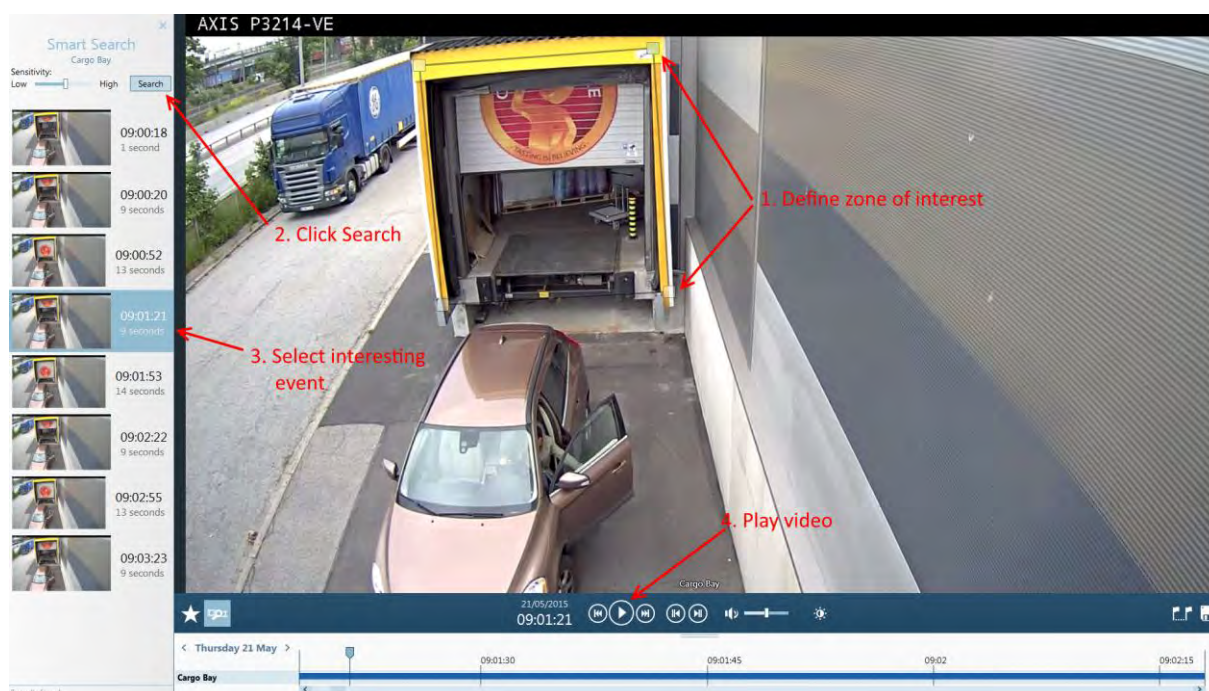
You can also use the camera list to select a single camera:



Camera list in playback workspace


If you are looking for a specific motion event you can use the **Smart Search** feature which allows you to browse through hours of recordings to find moving objects. Click the following button to open the

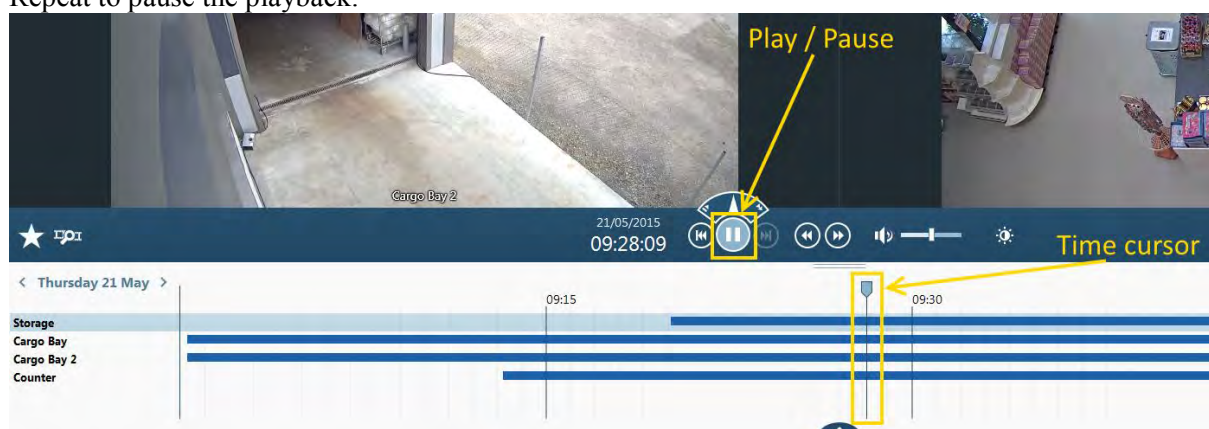
Smart Search panel: 



Smart Search panel

Playback recording

To playback a video recording place the cursor at the desired time and click  or press **Space**. Repeat to pause the playback.



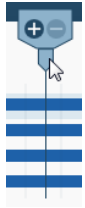
Playback recording

You can jump backward/forward 5 seconds using the following buttons: 

By hovering over the Play/Pause button and display “Speed Control” you can use the needle or the mouse wheel to adjust playback speed.




To zoom in/out in the time line, use the mouse wheel or hover the time cursor and press +/- :



Export recording

If you wish to export a complete recording select the camera and place the time cursor on the

recording before clicking the export button  located on the right side of the screen. You can also right click on the timeline and choose “Export...”.

Note: You can export several recordings from several cameras by holding **CTRL** and clicking on the different cameras in the timeline.

To export a specific part of a recording, use the **Toggle markers** .

In this example three of the four cameras have recorded video between the markers so three files will be exported.

The screenshot shows the 'Export' dialog box with the following table of recordings:

Camera	Start Time	Duration	End Time
<input checked="" type="checkbox"/> Counter	21/05/2015 09:58:52	1 minute 46 seconds	21/05/2015 10:00:37
<input checked="" type="checkbox"/> Parking	21/05/2015 09:58:52	15 seconds	21/05/2015 09:59:06
<input checked="" type="checkbox"/> Roof	21/05/2015 09:58:52	1 minute 46 seconds	21/05/2015 10:00:37

The timeline below the dialog box shows the time from 09:53 to 10:01. Markers are placed at 09:58:52 and 10:00:37. The 'Parking' camera has a recording between these markers. The 'Counter' and 'Roof' cameras have recordings that span the entire duration from 09:58:52 to 10:00:37.

Export recordings

Exported videos (.asf) can be played from a Windows computer with most of the media players or with **AXIS File Player**, generated automatically in the export destination folder.