

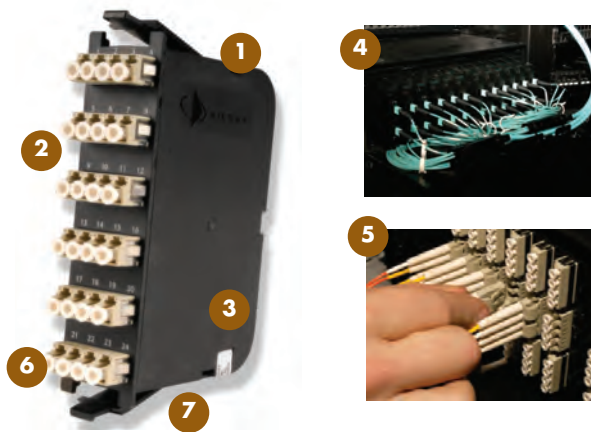


Plug and Play Modules and Adapter Plates

FIBER PLUG AND PLAY

SIEMON PLUG AND PLAY MODULES

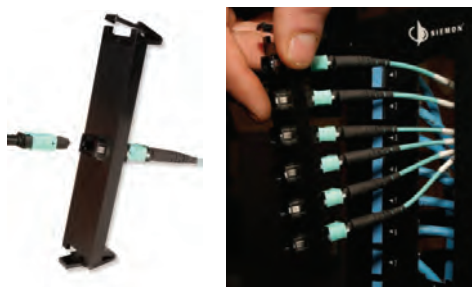
Siemon LC to MTP® and SC to MTP Plug and Play modules provide a quick and efficient way to deploy up to 24 LC or 12 SC fiber ports in a single module. These factory terminated and tested ports are protected within the housing for reliably high performance and simply connected via 12-strand MTP ports. Modules are available in multimode (62.5/125, standard 50/125 and XGLO laser optimized 50/125) and singlemode cable.



- 1 Compact Housing**
Reduces mounting depth for greater cable management space within enclosures
- 2 Optimized Adapter Spacing**
Enables easy finger access to fiber jumper connector latches in high density patching environments
- 3 Durable and Lightweight**
High-impact molded plastic body with single-finger access
- 4 Recessed Base**
Allows cable to be fit under the modules for added cable management space when installed in the horizontal orientation (i.e. within FCP drawer)
- 5 Compatible with Existing Siemon Enclosures**
Fits within RIC, FCP and SWIC Siemon fiber enclosures and VersaPOD vertical patch panels
- 6 Multimode and Singlemode Modules**
Utilize zirconia ceramic sleeves for optimum optical performance
- 7 Siemon's Plug & Play Cable Assemblies**
Are also available in a low loss version allowing for multiple mated pairs in 10/40/100G applications

MTP® ADAPTER PLATES

Siemon MTP Adapter Plates offer a user friendly “pass-through” option for MTP connectors. Fitting within Siemon's fiber enclosures and VersaPOD™ vertical patch panels, these plates secure MTP connectors, allowing efficient implementation of MTP to MTP reels and extenders as well as MTP to LC Trunks for direct equipment and patching connections



High Density

Supports up to 96 fibers per adapter plate - providing up to 1152 fibers in 4U

Flexible Configurations

1, 2, 4, 6 and 8 port versions available, supporting both singlemode and multimode

40 Gb/s and 100 Gb/s Ready

Enables simple upgrade path to future 40 Gb/s and 100 Gb/s applications over multimode 50/125 laser optimized fiber

Popular RIC Adapter Footprint

Fit within RIC, FCP and SWIC Siemon fiber enclosures and VersaPOD vertical patch panels





PRODUCT INFORMATION


Ordering Information:

PP2-12-(XX)(X)-01(X) 12 Fiber P&P Module with 1 MTP port, black

Interface
LC = LC
SC = SC

Configuration
L = Low Loss*
Blank = Standard Loss


Fiber Type
5 = 50/125 Multimode
6 = 62.5 Multimode
5L = XGLO 300 50/125 Multimode/OM3*
5V = XGLO 550 50/125 Multimode/OM4*
SM = Singlemode



PP2-24-LC(X)-01(X). 24 Fiber LC P&P Module with 2 MTP ports, black

Configuration
L = Low Loss*
Blank = Standard Loss

Fiber Type
5 = 50/125 Multimode
6 = 62.5 Multimode
5L = XGLO 300 50/125 Multimode/OM3*
5V = XGLO 550 50/125 Multimode/OM4*
SM = Singlemode



* Low loss is only available in OM3/OM4



RIC-F-MP(XX)-01 MTP Adapter Plate, black

- Fiber Count**
- 12 = 12 (1 MTP adapter)
 - 24 = 24 (2 MTP adapters)
 - 48 = 48 (4 MTP adapters)
 - 72 = 72 (6 MTP adapters)
 - 96 = 96 (8 MTP adapters)

PERFORMANCE

Fiber Type		MAX Insertion (db)		MAX Return Loss (db)		Performance Class
		MTP	LC, SC	MTP	LC, SC	
6MM	62.5/125	0.50	0.50	20	25	LightSystem™
5MM	50/125	0.50	0.50	20	25	LightSystem™
5L-MM	50/125 10G (OM3)	0.40	0.25	20	30	XGLO™ 300
5V-MM	50/125 10G (OM4)	0.40	0.25	20	30	XGLO™ 550
SM-LWP	SM (OS2)	0.60	0.40	55	55	XGLO™
5V-MM	50/125 10G (OM3)	0.20	0.15	20	30	XGLO 300 Low Loss
5V-MM	50/125 10G (OM4)	0.20	0.15	20	30	XGLO 550 Low Loss

For additional resource information:
 Visit our web site at www.siemon.com

The Americas
 Watertown, CT USA
 Phone (1) 860 945 4200 US
 Phone (1) 888 425 6165 Canada

Europe/Middle East/Africa
 Surrey, England
 Phone (44) 0 1932 571771

Asia/Pacific
 Shanghai, P.R. China
 Phone (86) 21 6390 6778

Central & South America
 Bogota, Colombia
 Phone (571) 317 2121

