



HD5® PATCH PANELS

The HD5 series patch panels offer the most robust patching solution in the industry. HD5 panels with universal T568A/B wiring significantly exceed category 5e requirements with component and channel performance to 160 MHz (Performance from 100 - 160 MHz based upon extrapolated TIA/TIA limits). The front surface of these panels is uninterrupted by screw heads or other hardware for a clean aesthetic appearance that allows sufficient space for circuit designation.

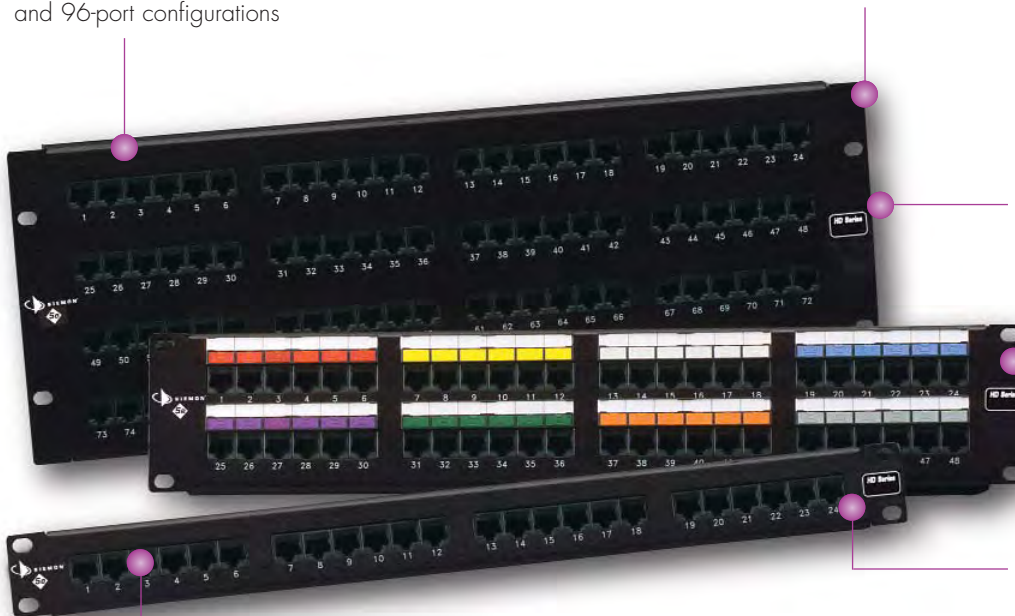


PATENTED

MODULAR PATCHING

Panels available in 16,24, 32, 48, and 96-port configurations

Panels can be mounted directly to an EIA standard 19 inch relay rack or cabinet

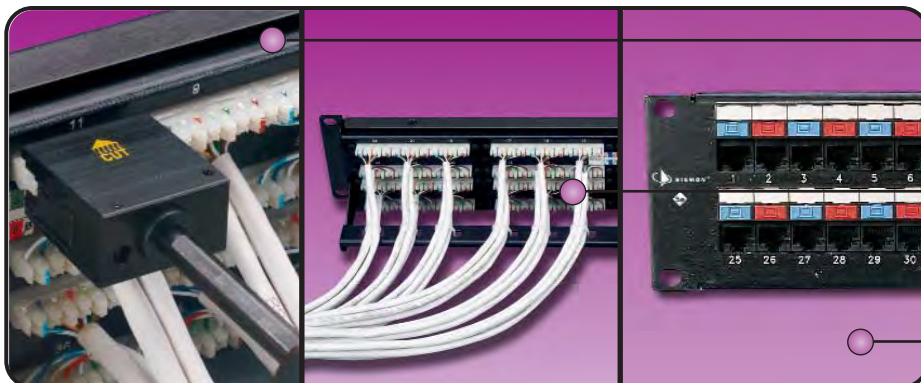


The most economical way to order HD5 panels is in bulk project pack with universal T568A/B wiring option

Write-on area for panel designation

Port identification numbers on front and rear of panel

Front surface is uninterrupted by screw heads for a clean appearance



Siemon compliant pin technology allows the use of Siemon's multi-pair impact tool to significantly reduce termination time. S110® termination opening on the rear are compatible with S110 patch plugs

Integrated rear cable manager properly guides cables to and from the rear of the panel

Label holder kits are included with every panel





MODULAR PATCHING

ORDERING INFORMATION

ELECTRICAL	
Contact Resistance	20 mΩ
Input to Output Resistance	200 mΩ
Min. Dielectric Withstand Voltage (contact to contact)	1000 V DC or AC peak
Min. Dielectric Withstand Voltage (contact to shield)	1500 V DC or AC peak
Insulation Resistance	500 MΩ
Compatibility	Backwards to cat 3
Current Rating	1.5 AnPoE and PoE and PoE+
PoE	Suitable for PoE and PoE+
MECHANICAL – GENERAL	
Operating Temperature	-10 to 60 °C, (14 to 140 °F)
Flammability Rating	UL 94 V-0
Green Features	RoHS, lead-free, halogen-free, PVC free
Jack Housing Material	Glass-reinforced nylon
Jack Contact Materials	Plated phospher bronze, stainless steel
Jack Plastic Materials	Flame retardant themoplastic

MECHANICAL – JACK	
Number of Plug Insertion Cycles	750
Min. Plug Retention Force	50N
Plug Compatibility	Compatible with RJ45 (8-position) or RJ11 (6-position) plugs
MECHANICAL – TERMINATION	
Wire Size Range (nominal)	23-26 AWG solid and stranded
Wire Insulation Diameter Range (max)	1.48mm (0.058 in)
Conductor OD Size (max)	0.60mm (0.023 in)
Cable OD (max)	9mm (0.354 in)
Re terminations	20
Wiring	T568A/B

HD5® Flat Patch Panels:

- HD5-1616-port flat panel, T568A/B wiring, 1 RMS*
- HD5-2424-port flat panel, T568A/B wiring, 1 RMS
- HD5-3232-port flat panel, T568A/B wiring, 2 RMS*
- HD5-4848-port flat panel, T568A/B wiring, 2 RMS
- HD5-9696-port flat panel, T568A/B wiring, 4 RMS

Flat panels include one rear cable manager, icon label holders, designation labels, cable ties, and mounting hardware
 *Note: 16- and 32-port HD5 panels feature S310® termination blocks and are not compatible with S110® multi-pair termination tools

ⓑ Add "B" for bulk project pack of 5 panels (rear cable managers not included but can be ordered separately).

HD5® Angled Patch Panels:

- HD5-24A24-port angled panel, T568A/B wiring, 1 RMS
- HD5-48A.....48-port angled panel, T568A/B wiring, 2 RMS

Angled panels include one rear cable manager, designation labels, cable ties, and mounting hardware

Note: 1 RMS = 44.5mm (1.75 in.)

ⓑ Add "B" for bulk project pack of 5 panels (rear cable managers not included but can be ordered separately).

HD5® 12 port panel mounted on S89D Bracket:

- HD5-89D-12.....12-port panel, T568A/B wiring, mounted on S89D bracket

For additional resource information:

Visit our web site at www.siemon.com

Because we continuously improve our products, Siemon reserves the right to change specifications and availability without prior notice.



PROD-SS-HD5 Rev. J 11/12

North America
 Watertown, CT USA
 Phone (1) 860 945 4200 US
 Phone (1) 888 425 6165 Canada

Europe/Middle East/Africa
 Surrey, England
 Phone (44) 0 1932 571771

Asia/Pacific
 Shanghai, P.R. China
 Phone (86) 21 5385 0303

Latin America
 Bogota, Colombia
 Phone (571) 657 1950

