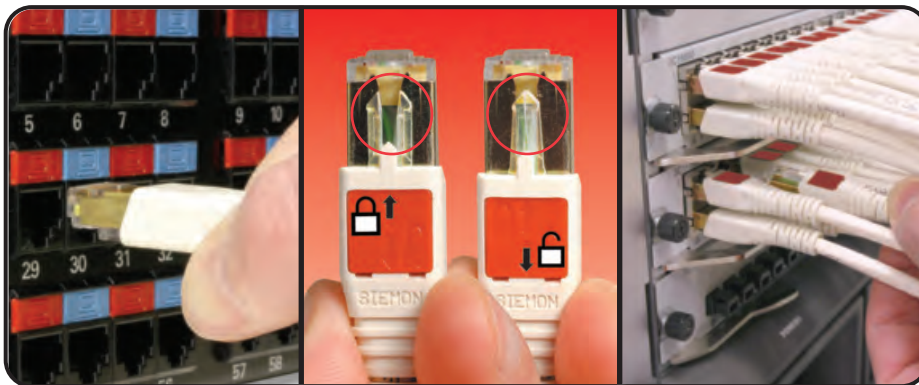
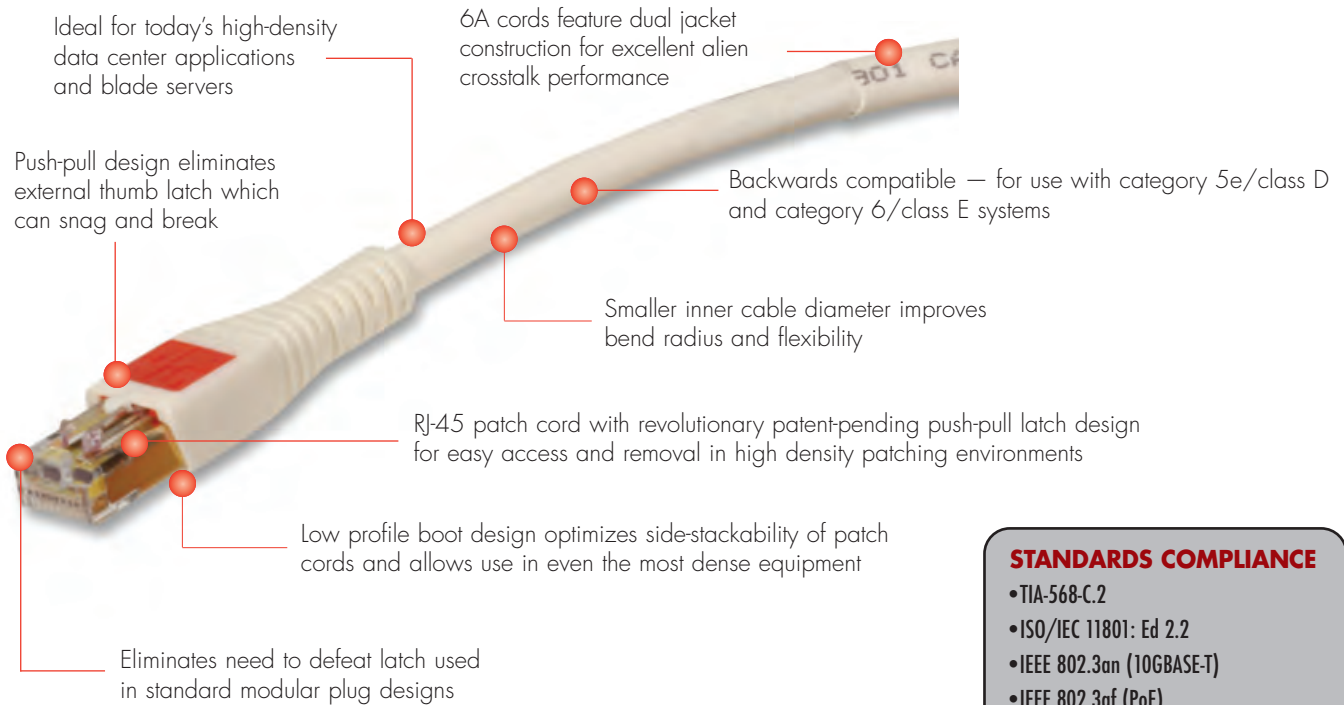


# 6A UTP BLADEPATCH®

Siemon's 6A UTP BladePatch patch cord offers a unique category 6A solution for high-density patching environments. It features an innovative push-pull boot design to control the latch, enabling easy access and removal of the cord in tight-fitting areas. The BladePatch cord is ideal for patching high density blade servers, patch panels, or any equipment with RJ-45 outlets.

Combine the BladePatch with Siemon's Z-MAX® modules, patch panels and cable for a complete category 6A channel solution, meeting or exceeding all 10GBASE-T requirements including alien crosstalk. The 6A UTP cabling system delivers unparalleled network performance today and supports multi-gigabit applications. These cords are also backwards compatible with lower category connecting hardware.



*Fits within any standard RJ45 opening*

*Simply push the boot forward to latch into the outlet and pull back to release*

*The push-pull design enables easy access and removal via the boot in tight-fitting areas*



PATCH CORDS, PLUGS & CABLE

- STANDARDS COMPLIANCE**
- TIA-568-C.2
  - ISO/IEC 11801: Ed 2.2
  - IEEE 802.3an (10GBASE-T)
  - IEEE 802.3af (PoE)
  - IEEE 802.3at (PoE+)
  - IEC 60603-7
  - ANSI/TIA-1096-A
  - IEC 60603-7-41



# PRODUCT INFORMATION

## Performance Specification Chart:

| ELECTRICAL   |   |
|--|---|
| Contact Resistance                                     | 10 mΩ                                   |
| Input to Output Resistance                             | 200 mΩ                                  |
| Min. Dielectric Withstand Voltage (contact to contact) | 1000 V DC or AC peak                    |
| Insulation Resistance                                  | 500 mΩ                                  |
| Compatibility  | Backwards to cat 5e and cat 6           |
| Current Rating   | 1.5 A                                   |
| PoE  | Suitable for PoE and PoE+               |
| Surface Transfer Impedance                             | < 10 mΩ/m @ 10 MHz                      |
| MECHANICAL – GENERAL                                   |   |
| Operating Temperature                                  | -10 to 60 °C [14 to 140 °F]             |
| Flammability Rating                                    | UL 94 V-0                               |
| Green Features   | RoHS, lead-free, halogen-free, PVC free |
| Plug Housing Material                                  | Polycarbonate                           |
| Contact Materials                                      | 50 microns gold plating or equivalent   |
| Plastic Materials                                      | Flame retardant thermoplastic           |
| Screen   | 360 degree enclosure                    |
| Marking  | P/N, length, performance level, QC      |
| MECHANICAL – PLUG                                      |   |
| Number of Plug Insertion Cycles                        | 2500                                    |
| Min. Plug Retention Force                              | 50N                                     |
| Plug Compatibility                                     | Compatible with RJ45 outlets            |
| Cable to Plug Tensile Strength (min)                   | 20 lbs                                  |

| MECHANICAL – CABLE (STRANDED) |  |
|-------------------------------|--|
| Wire Size Range (nominal)     | 26 AWG 7x32 Stranded tinned copper               |
| Cable Construction            | UTP dual jacketed                                |
| Cable OD (nominal)            | 7.37mm (0.29 in.) outer, 6.43mm (0.25 in.) inner |
| Wiring                        | T568A/B  |
| Jacket Type                   | CMG  |
| Bend Radius                   | 25mm (1.0 in.)                                   |

### 6A UTP BladePatch:

BP6A-(XX)(X)-(XX) .....BladePatch 6A UTP patch cord with push-pull latching design, color matching cord/boot, T568A/B

Use 1st (XX) to specify cord length: (Ex: 03)

Use (X) to specify units: Blank = Feet, M = Meters

Use 2nd (XX) to specify cable color:

01 = black, 02 = white, 03 = red, 04 = gray, 05 = yellow, 06 = blue, 07 = green, 08 = violet, 09 = orange

**B** Add "B" for bulk project pack of 100 modular cords

Because we continuously improve our products, Siemon reserves the right to change specifications and availability without prior notice.

BladePatch® and Z-MAX® are trademarks of Siemon



### For additional resource information:

Visit our web site at [www.siemon.com](http://www.siemon.com)