



## **The Experience is the Difference** *Plug into the flexibility of VideoXpert™*

Historically video management systems by nature are complex – a complexity that often overwhelms the user experience, resulting in a steep learning curve and misplaced focus.

### **VideoXpert is different.**

Its intuitive design and easy-to-navigate workflow effortlessly display what's needed, when it's needed, allowing security professionals to make fast, effective decisions that drive your business forward.

Coupled with its powerful integration capabilities, VideoXpert leverages the expertise of third party providers for customizable functionality and maximum flexibility. Experience the ease of use, reliability and performance you demand.

Learn How » [Pelco.com/VideoXpert](http://Pelco.com/VideoXpert)

# PELCO™

by **Schneider** Electric

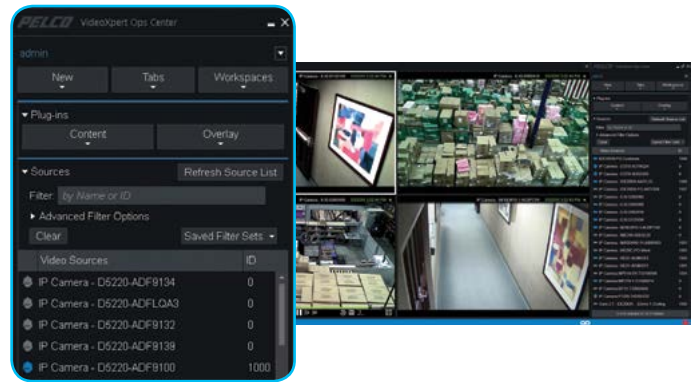
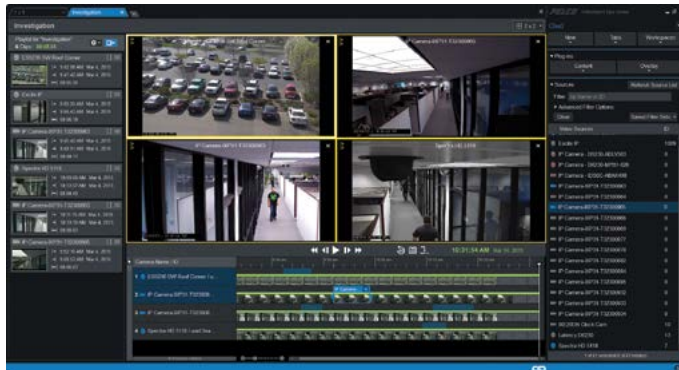
## **+** *At a Glance*

- Ground breaking user experience
- Intuitive design
- Third party plug-in architecture
- Scale through modularity
- Deploy as a software solution or with the convenience of Pelco hardware.
- Easy migration for existing Pelco customers

**Choose with Confidence.**

## Unified User Interface

- Draggable UI elements, reorganize your workspace on the fly
- Tag based organization
- Browser-like interface utilizes tab views for a single source UI experience
- Independent displays operate seamless workspaces with views that can be shared with other users

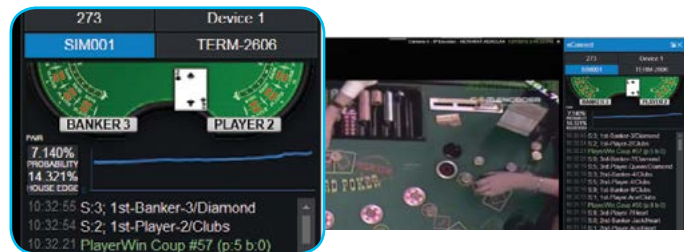


## Incident and Events Management

- Investigation mode quickly locates and collates video
- Synchronize video to capture scene from multiple angles
- Recall and highlight moments of interest from recorded video using Bookmarks
- Increase event relevance to the user by customizing events including alarms and in-cell alerts

## Third Party Plug-ins

- View Partner video through VideoXpert single user interface
- Overlay video with critical business data
- Unify operational and security data over system video
- Extensible functionality through partner integration



### Immersive Experience

- Integration with Optera™ cameras provides an immersive, 180° view
- Pan, tilt, or zoom during live or recorded video
- Full resolution panoramic & immersive views provide a truly seamless experience



### Ultimate Reliability

- Redundancy within purpose-built hardware
- Modular, failover scalability
- Distributed architecture prevents system-wide failures
- Maximize display capabilities, dedicate single CPU to monitor
- View up to 16 streams per monitor



### Centralize Video Management

- Aggregate multiple video management systems into a single interface with VideoXpert Utility
- Through aggregation, build and maintain a concerted video management system despite distributed and disparate resources across networks.



### Planned Migration

- Migrate current Endura® and Digital Sentry® hardware and environments to VideoXpert
- Repurpose hardware and reuse current video management infrastructures while gaining increased functionality and benefits
- Leverage NSM and Digital Sentry storage hardware, preserving the existing video stored on those devices, while providing access to the new VideoXpert user experience.



Contact the sales representative in your area today, or visit [pelco.com](http://pelco.com) to download complete specification sheets.

©2015 Schneider Electric. All Rights Reserved. Trademarks owned by Schneider Electric Industries SAS or its affiliated companies. All other trademarks are property of their respective owners.  
[www.schneider-electric.com](http://www.schneider-electric.com)

December 2015

SC-421\_GMA-US