



IDEAL NETWORKS



NaviTEK NT

Copper and Fiber Network Troubleshooter



IDEAL INDUSTRIES, INC.

NaviTEK NT

Network Troubleshooter

The NaviTEK NT is a network tester for troubleshooting and maintenance of active and passive copper and fiber networks. Incorporating an improved graphical interface NaviTEK NT allows network technicians to pinpoint and solve network connectivity issues faster than ever before. Subsequently, tests can be saved as pdf reports and shared with colleagues and clients using the free IDEAL AnyWare™ app.

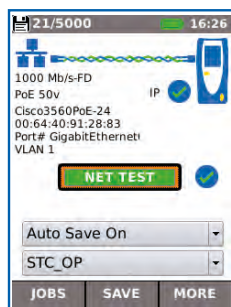


Addressing the needs of today's network technicians

Today, network technicians have a broad selection of software troubleshooting tools at their disposal and whilst useful in certain situations and environments they do have limitations. NaviTEK NT on the other hand offers a comprehensive suite of test and troubleshooting functionality only found on dedicated hand-held testers:-

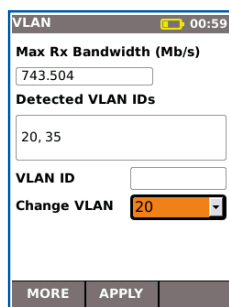
- Copper and fiber test interfaces
- Fast detection of link and IP information including duplex, speed, port ID, VLAN, DNS, DHCP, Gateway status and IP address
- Detects services such as ISDN, POTS and PoE
- Accurate wire mapping including length measurement and distance to fault
- Rugged, compact design permits use in confined spaces
- Not susceptible to virus and malware attack

Port & network summary info



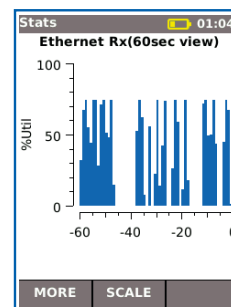
Press the Autotest button to display summary information and allow for detailed inspection of network parameters.

VLAN detection & operation



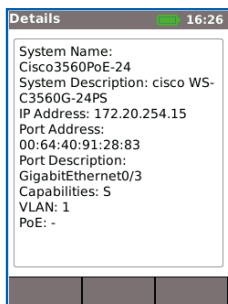
Automatic detection of VLAN ID's allows the user to configure NaviTEK NT for operation on a VLAN.

Ethernet utilization



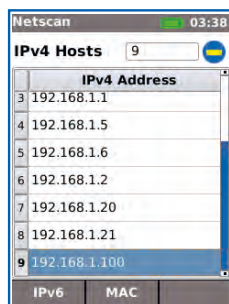
Real time display of broadcast network traffic shown as a percentage of port speed for the previous 60 minutes.

CDP/LLDP/EDP port information



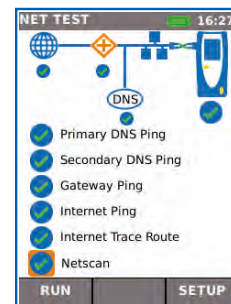
Show port information using Cisco Discovery Protocol (CDP), Link Layer Discovery Protocol (LLDP) and Extreme Discovery Protocol (EDP).

Netscan



Display list of IP and MAC addresses of every device connected to the network.

Network Probe



View network illustration to verify test results of each network component.

Send test data from anywhere using the free app



IDEAL
AnyWARE



Step 1

Test

- Create job folder
- Enter job site information
- Perform autotest on copper/fiber cabling and copper/fiber networks



Step 2

Connect

- Activate NaviTEK NT wireless hotspot
- Connect your mobile phone or tablet with the IDEAL AnyWARE App
- Transfer test reports to your mobile device
- View test reports



Step 3

Send

- Select reports (PDF or CSV) to send
- Select preferred transfer method - email, ftp, cloud storage etc.
- Send file
- Alternatively save test reports to USB key

Download the FREE app today



NavITEK NT

Performs tests for copper cabling and networks, including:

- Display network configuration - IPv4 / IPv6 compatible
- Advanced wiremap for miswires, split pairs, opens and shorts
- Distance to opens and shorts (TDR)
- PoE/PoE+ detection
- Tone generator for cable tracing
- Ping and Traceroute testing
- Hub blink for port identification
- DHCP client
- Switch detection - 10/100/1000 Mb/s
- User-exchangeable RJ45 inserts
- Support for up to 12 wiremap remotes
- Backlit color screen

NavITEK NT Plus

All the features of NaviTEK NT as well as:

- Autotest button performs a suite of network tests
- Network Probe provides detailed port and network information of each device
- Port identification using EDP/CDP/LLDP protocols
- VLAN detection and support
- Network scan
- Traffic utilization bar graph
- Internal memory for 5000 test reports
- Generate test reports (PDF or CSV)
- Sent test reports from your mobile device using the free IDEAL AnyWARE App

NavITEK NT Pro

All of the features of NaviTEK NT Plus as well as:

- Fiber optic cable interface
- Logon using the 802.1x protocol
- Optical interface with power indication

