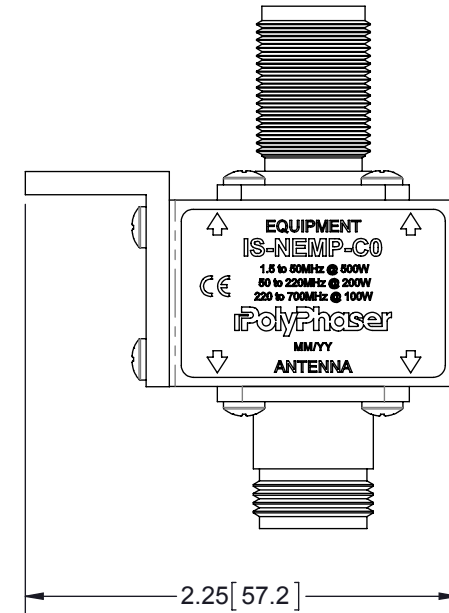
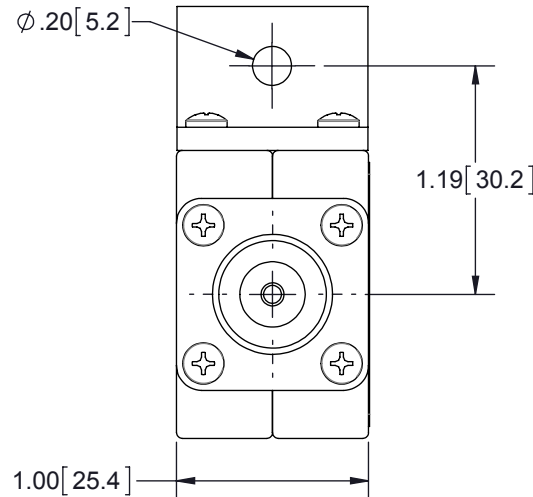
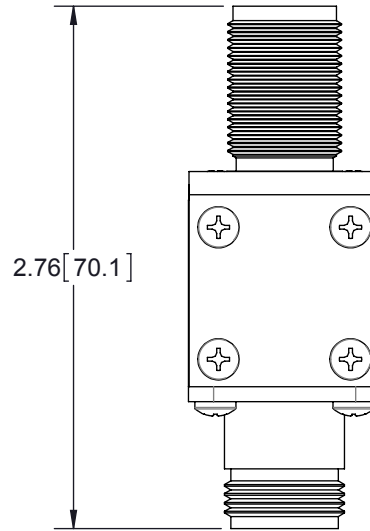
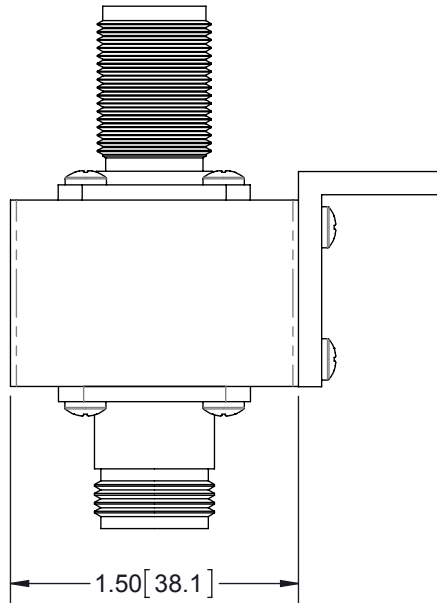


REVISIONS				
REV.	DESCRIPTION	ECN	DATE	APPROVED
G	REFER TO ECN	11339		



MAXIMUM CHARACTERISTICS

SURGE:
50kA IEC 1000-4-5 8/20 μ s WAVEFORM 500 JOULES

TURN-ON:
330Vdc \pm 20%

TURN-ON TIME:
1.5ns FOR 2kV/ns

FREQUENCY RANGE:
1.5MHz TO 700MHz

VSWR:
 \leq 1.1:1 @ 1.5MHz TO 700MHz



INSERTION LOSS:
 \leq 0.1dB OVER FREQUENCY RANGE

TEMPERATURE:
-45°C TO +85°C STORAGE/OPERATING +50°C

CE COMPLIANT

CUSTOMER APPROVAL: _____ DATE: _____

ALL DIMENSIONS SHOWN ARE FOR REFERENCE ONLY.

<div>UNLESS OTHERWISE SPECIFIED LEADING DIMENSIONS ARE INCHES DIMENSIONS IN [] ARE MILLIMETERS</div> <div>TOLERANCES: FRACTIONS=± 1/32 .XX=± .03 ANGLES=± 1° .XXX=± .010</div> <div>NOTICE: THE INFORMATION AND DESIGN IN THIS DOCUMENT IS THE PROPERTY OF POLYPHASER CORPORATION. ALL RIGHTS RESERVED.</div> <div>THIRD-ANGLE PROJECTION</div> <div></div>	<div>DRAWN D. SCHARMANN</div> <div>ENG APPD J. JONES</div> <div>PRODUCT MGR</div> <div>MARKETING APPD N. JOHN</div> <div>PROJECT NO.</div> <div>DOCUMENT NAME IS-NEMP-C0-C</div>	<div>DATE 12/23/94</div> <div>12/23/94</div> <div></div> <div>12/23/94</div> <div></div> <div></div>	<div></div> <div>TITLE CUSTOMER PRINT IS-NEMP-C0 CUSTOMER SPECIFICATION</div>				<div>SHEET 1 OF 1</div> <div>SCALE 1:1</div>	
	SIZE A				CAGE 61114	PROD CAT RFP	PART NUMBER IS-NEMP-C0	REV G

THESE COMMODITIES, TECHNOLOGY OR SOFTWARE WERE EXPORTED FROM THE UNITED STATES IN ACCORDANCE WITH THE EXPORT ADMINISTRATION REGULATIONS. DIVERSION CONTRARY TO U.S. LAW PROHIBITED.