

TDP43ME Thermal Transfer Desktop Printer and Accessories

The TDP43ME Thermal Transfer Desktop Printer produces high-quality printed labels to identify infrastructure components in data center, industrial automation, and enterprise applications. With durable construction and compact size, the 300 dpi printer is designed for dependable use in industrial, construction, and harsh environments. Using the included Easy-Mark™ Labeling Software, the printer provides simple setup as well as easy operation and use with all Panduit thermal transfer label media. This solution provides network installers, electrical contractors, MRO groups, custom control panel builders, and wire and cable harness houses with the ability to create wire and cable markers, terminal block labels, equipment labels, marker plates, panel labels, network labels, and safety and facility labels.

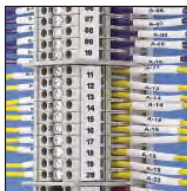


Key Features	Benefits
Compatible and easy setup with Panduit software and media	Convenient, easy setup; quickly begin producing infrastructure identification
High-quality printed legends	Durable, clear communication through superior legibility
Simple operation	One-button operation and auto-sensing gap detection reduces time required for learning how to operate the printer and make adjustments
Durable construction	Allows use in construction, industrial, and harsh environments
Easy loading of ribbon and media	Reduces time required to switch between label styles
Easy-Mark™ Labeling Software included with printer	Cost savings; no need to invest in labeling software
USB, Parallel, Serial, and Ethernet connectivity	Connects quickly and easily to any computer
Up to 4 inches per second print speed	Fast label production without sacrificing print quality
Compact, lightweight design	Allows use in office and remote locations

TDP43ME Labeling Applications



Wire and Cable Marking



Terminal Block Labeling



Electrical Infrastructure Labeling



Marker Plates



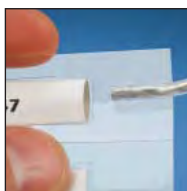
Raised Panel Labels



Network Infrastructure Labeling



Pipe Marking



2-Sided Heat Shrink Markers



Turn-Tell® Labels



Safety Signs



Electrical Hazard Labels



Flag Labels

TDP43ME Thermal Transfer Desktop Printer and Accessories

Technical/Performance Information

Print Method	300 dpi thermal transfer
Print Speed	2.00" to 4.00" (50.8mm to 101.6mm) per second
Media Width	4.25" (108.0mm)
Media Sensor	Adjustable, Gap and Black Mark sensing
Media Handling	Die cut labels, butt cut labels, continuous tapes
Media Feeding	Internal roll mount, rear feed with optional roll stand
Weight	6 lbs. (2.72 kg)
Connectivity	USB, Parallel, Serial, Ethernet
Size (width x height x depth)	8.90" x 6.80" x 11.20" (228.0mm x 173.0mm x 284.0mm)
Regulatory Compliance	FCC, CE, CEC, CCC, CB, RoHS, cUL, WEEE
Power	Auto Switching 100/240VAC, 50/60 Hz
Operating System Compatibility	Windows 2000, Windows 7, XP, Vista

Windows 2000, Windows 7, XP, and Vista are registered trademarks of Microsoft Corporation in the United States and/or other countries.

TDP43ME Ordering Information



TDP43ME

Part Number	Part Description	Std. Pkg. Qty
TDP43ME	300 dpi printer; includes printer, Panduit® Easy-Mark™ Labeling Software, RMEH4BL black hybrid ribbon, user manual, quick start card, driver disk, USB cable, AC power adapter with U.S. power cord; for use in North America.	1
TDP43ME/E	300 dpi printer; includes printer, Panduit® Easy-Mark™ Labeling Software, RMEH4BL black hybrid ribbon, user manual, quick start card, driver disk, USB cable, AC power adapter with the following power cords: EuroPlug, Swiss, UK, and Japan JIS 8303 3-pin; for use outside North America.	1
TDP43ME-KIT	TDP43ME printer kit. Includes: printer, Panduit® Easy-Mark™ Labeling Software, RMEH4BL black hybrid ribbon, user manual, quick start card, TDP43ME-CASE carrying case, one roll S100X150VATY labels, roll stand, driver disk, USB cable, AC power adapter with U.S. power cord; for use in North America.	1
TDP43ME/E-KIT	TDP43ME/E printer kit. Includes: printer, Panduit® Easy-Mark™ Labeling Software, RMEH4BL black hybrid ribbon, user manual, quick start card, TDP43ME-CASE carrying case, one roll S100X150VATY labels, roll stand, driver disk, USB cable, AC power adapter with the following power cords: EuroPlug, Swiss, UK, and Japan JIS 8303 3-pin; for use outside North America.	1
TDP43ME-RS	External label roll stand for TDP43ME printer; used to rear feed labels that are supplied on 3" cores.	1
TDP43ME-CASE	Hardside carrying case accommodates printer, AC power adapter, ribbons, printer cable, external roll stand, labels, and tools.	1
TDP43ME-AC	Replacement AC power adapter with power cord (U.S. cord only).	1
TDP43ME-CUTTER	Optional power/automatic cutter for TDP43ME thermal transfer desktop printer; easy to install for automatic cutting of labels.	1
PTR-CLN	Printer cleaning kit – contains cleaning solution-soaked wipes, foam swabs, material safety data sheet, cleaning instructions, cleaning pen.	1

TDP43ME Thermal Transfer Desktop Printer and Accessories

Thermal Transfer Ribbons



RMEH4BL

Part Number	Part Description	Width		Length		Std. Pkg. Qty
		In.	mm	Ft.	m	
RMEH2BL	Black hybrid thermal transfer ribbon. For use with TDP43ME desktop printer. Use with heat shrink, self-laminating, Turn-Tell®, and vinyl cloth labels.	2.50	63.5	300.0	91.4	1
RMEH4BL	Black hybrid thermal transfer ribbon. For use with TDP43ME desktop printer. Use with heat shrink, self-laminating, Turn-Tell®, and vinyl cloth labels.	4.25	108.0	300.0	91.4	1
RMER2BL	Black resin thermal transfer ribbon. For use with TDP43ME desktop printer. Use with polyester and polyimide labels, continuous vinyl tape, marker plates, and raised panel labels.	2.50	63.5	300.0	91.4	1
RMER4BL	Black resin thermal transfer ribbon. For use with TDP43ME desktop printer. Use with polyester and polyimide labels, continuous vinyl tape, marker plates, and raised panel labels.	4.25	108.0	300.0	91.4	1
RMER4BU	Blue resin thermal transfer ribbon. For use with TDP43ME desktop printer. Use with continuous vinyl tape, marker plates, and raised panel labels.	4.25	108.0	300.0	91.4	1
RMER4GR	Green resin thermal transfer ribbon. For use with TDP43ME desktop printer. Use with continuous vinyl tape, marker plates, and raised panel labels.	4.25	108.0	300.0	91.4	1
RMER4RD	Red resin thermal transfer ribbon. For use with TDP43ME desktop printer. Use with continuous vinyl tape, marker plates, and raised panel labels.	4.25	108.0	300.0	91.4	1
RMER2WH	White resin thermal transfer ribbon. For use with TDP43ME desktop printer. Use with continuous vinyl tape, marker plates, and raised panel labels.	2.50	63.5	300.0	91.4	1
RMER4WH	White resin thermal transfer ribbon. For use with TDP43ME desktop printer. Use with continuous vinyl tape, marker plates, and raised panel labels.	4.25	108.0	300.0	91.4	1

Order in multiples of standard package quantity.

For a full offering of Panduit label products available for the TDP43ME, visit www.panduit.com

WORLDWIDE SUBSIDIARIES AND SALES OFFICES

PANDUIT CANADA
Markham, Ontario
cs-cdn@panduit.com
Phone: 800.777.3300

PANDUIT EUROPE LTD.
London, UK
cs-emea@panduit.com
Phone: 44.20.8601.7200

PANDUIT SINGAPORE PTE. LTD.
Republic of Singapore
cs-ap@panduit.com
Phone: 65.6305.7575

PANDUIT JAPAN
Tokyo, Japan
cs-japan@panduit.com
Phone: 81.3.6863.6000

PANDUIT LATIN AMERICA
Guadalajara, Mexico
cs-la@panduit.com
Phone: 52.33.3777.6000

PANDUIT AUSTRALIA PTY. LTD.
Victoria, Australia
cs-aus@panduit.com
Phone: 61.3.9794.9020

For a copy of Panduit product warranties, log on to www.panduit.com/warranty

For more information

Visit us at www.panduit.com

Contact Customer Service by email: cs@panduit.com
or by phone: 800.777.3300

PANDUIT®

©2013 Panduit Corp.
ALL RIGHTS RESERVED.
IDCB69--WW-ENG
6/2013