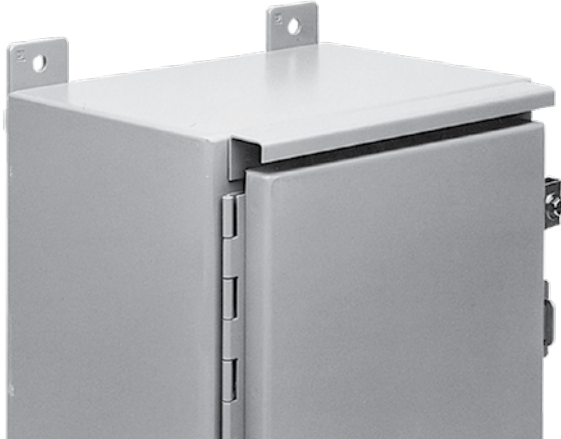


DRIP SHIELD KIT FOR TYPE 12 ENCLOSURES



Protects door hardware from dripping water and settling dust. Attaches quickly and easily to the enclosure with stainless steel screws and sealing washers (hardware is furnished). Stainless steel hinge pin and stainless steel door clamping assemblies are furnished to replace the standard hinge pin and door clamping assemblies. A tube of sealing compound is also supplied with each kit. Manufactured from 14 gauge steel with an ANSI 61 gray polyester powder paint finish over pretreated surfaces.

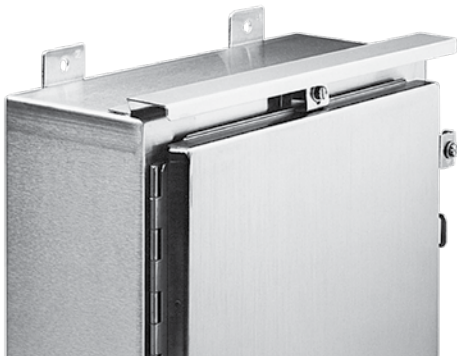
BULLETIN: A80

DRIP SHIELD KIT FOR TYPE 12 FREE-STANDING AND FLOOR-MOUNT ENCLOSURES WITH CONCEALED HINGES

Protects door hardware from dripping water and settling dust. Attaches quickly and easily to the enclosure with stainless steel screws and sealing washers (hardware is furnished). A tube of sealing compound is also supplied with each kit. Manufactured from 14 gauge steel with an ANSI 61 gray polyester powder paint finish over pretreated surfaces.

BULLETIN: A80

STAINLESS STEEL DRIP SHIELD KIT FOR TYPE 4 AND 4X WALL-MOUNT ENCLOSURES



Catalog Number	For	Fits Enclosure Size B in./mm
ADK12A	Single-Door Wall-Mount Enclosures	12.00 305
ADK16A	Single-Door Wall-Mount Enclosures	16.00 406
ADK20A	Single-Door Wall-Mount Enclosures	20.00 508
ADK24A	Single-Door Wall-Mount/Floor-Mount Enclosures with Continuous Hinge	24.00 610
ADK30A	Single-Door Wall-Mount/Floor-Mount Enclosures with Continuous Hinge	30.00 762
ADK36A	Single-Door Wall-Mount/Floor-Mount Enclosures with Continuous Hinge	36.00 914
ADK42A	Two-Door Floor-Mount, Continuous Hinge Enclosures	42.00 1067
ADK48A	Two-Door Floor-Mount, Continuous Hinge Enclosures-Door Floor-Mount Enclosures	48.00 1219
ADK60A	Two-Door Floor-Mount, Continuous Hinge Enclosuresoor Floor-Mount Enclosures	60.00 1524
ADK72A	Two-Door Floor-Mount, Continuous Hinge Enclosuresoor Floor-Mount Enclosures	72.00 1829

Two-Door Drip Shield kits are not designed for use on 48.00-in. (1219-mm) wide and 60.00-in. (1524-mm) wide Two-Door Type 12 Wall-Mount Enclosures.

Catalog Number	For	Fits Enclosure Size B in./mm
ADK24HH	Single-Door Free-Stand/Floor-Mount Enclosures	24.00 610
ADK30HH	Single-Door Free-Stand/Floor-Mount Enclosures	30.00 762
ADK36HH	Single-Door Free-Stand/Floor-Mount Enclosures	36.00 914
ADK42HH	Two-Door Free-Stand/Floor-Mount Enclosures	42.00 1067
ADK48HH	Two-Door Free-Stand/Floor-Mount Enclosures	48.00 1067
ADK60HH	Two-Door Free-Stand/Floor-Mount Enclosures	60.00 1524
ADK72HH	Two-Door Free-Stand/Floor-Mount Enclosures	72.00 1829

Easily installed on Type 4 and 4X wall-mount enclosures (excluding quick-release latch models). Protects door from dripping water and settling dust. Attaches quickly and easily to the enclosure with stainless steel screws and sealing washers (furnished). A tube of sealing compound is supplied with each kit. Manufactured from 14 gauge Type 316 stainless steel. Kits can be special ordered for other Hoffman enclosures. Consult factory for more information. Product maintains UL/CSA Type 4, 4X and 12 rating when properly installed on a Hoffman enclosure.

BULLETIN: A4SY

Catalog Number	Fits Enclosure Size B in./mm
ADK12SS6	12.00 305
ADK16SS6	16.00 406
ADK20SS6	20.00 508
ADK24SS6	24.00 610
ADK30SS6	30.00 762
ADK36SS6	36.00 914

Notes