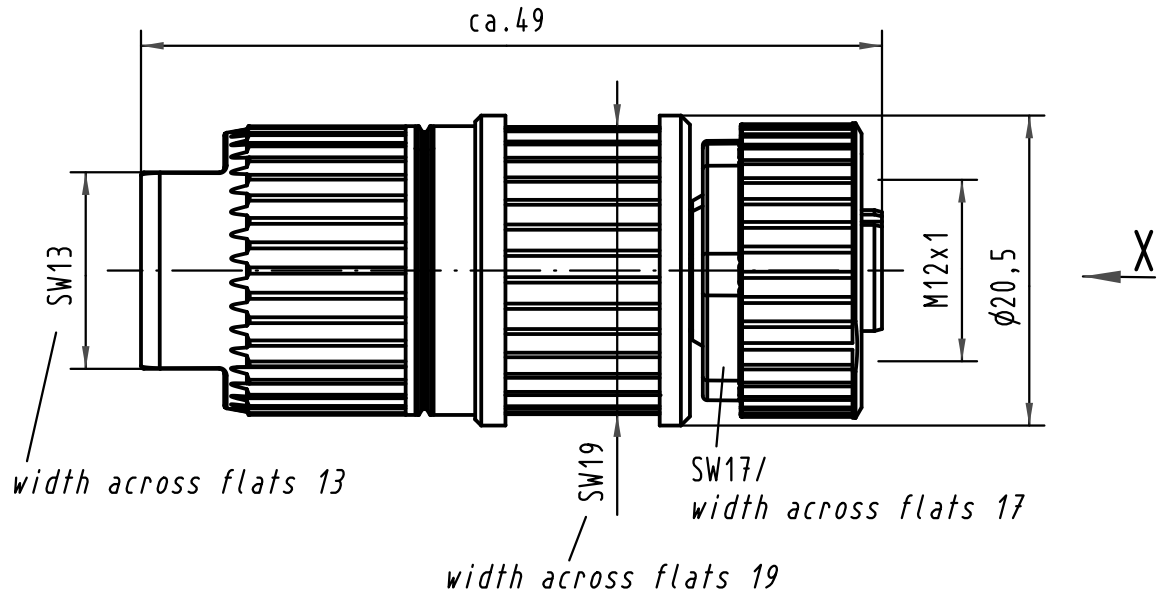
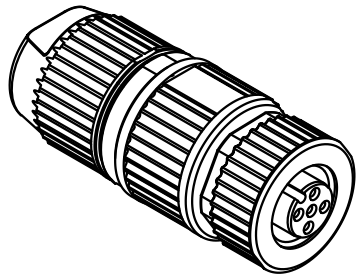
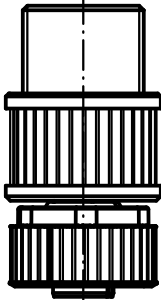
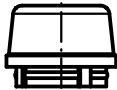
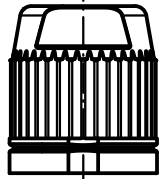
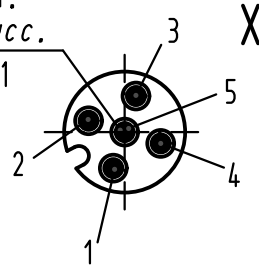


1 2 3 4 5 6

1:1



Steckgesicht n.
Contact face acc.
IEC 61076-2-101



Leiterquerschnitt conductor cross section	0,34 - 0,5mm ² AWG22-AWG20
Kabeldurchmesser cable outside diameter	6 - 8mm schwarz/black

All Dimensions in mm Original Size DIN A 4			Techn. Character.			Maßstab/Scale 2:1
			Dat.	Name		
			Detail.	19.04.06 DY		
			Insp.	SP		
			Stand.			
ECO1896	18.05.10	DY	HARTING Electronics GmbH & Co. KG			
412800	19.03.07	DY	D-32339 ESPELKAMP			
411702						
Mod.	Dat.	Name	Sub.			

Nicht tolerierte Maßel Free size tolerances	
Rundsteckverbinder M12-L/ Circular connector M12-L 5polig Buchse A-kodiert 5poles female A-coded	
TB 21 03 272 2505	Blatt/ page