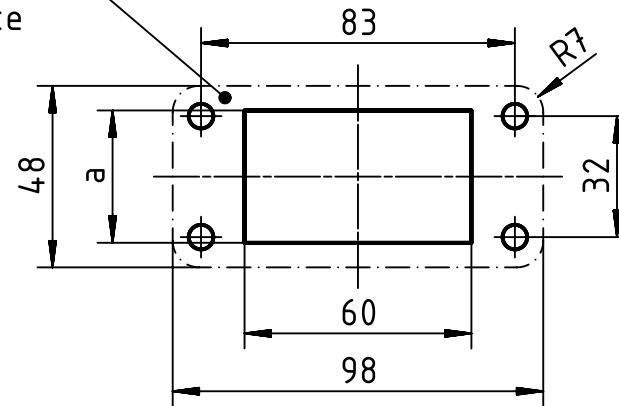


for EMC features,
conductive surface

panel cut out



application	a
standard insert	35
HC-Modular 650	44,5

	All rights reserved Department EL PD - DE HARTING Electric GmbH & Co. KG D-32339 Espelkamp	All Dimensions in mm Original Size DIN A4	Scale 1:2	Free size tol.	Ref. Sub.
		Created by PENNER	Inspected by BERGHORN	Standardisation TIEMANNA	Date 2014-04-22
Title Han 10HPR-HBM-Screw locking-Cover					Doc-Key / ECM-Nr. 100209591/UGD/004/B 500000073860
Type TB		Number 09 40 010 0317			Rev. B
					Page 1/1