

APC Back-UPS® 550

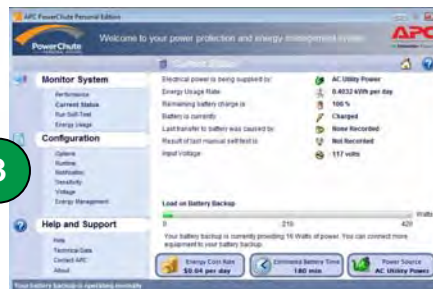
Best Value Battery Backup & Protection for Home and Home Office Computers

APC's Back-UPS provides enough battery backup power so you can work through short and medium length power outages. It also safeguards your equipment against damaging surges and spikes that travel along utility and phone lines. The Back-UPS series is also "greener" than ever, using an ultra-efficient design that consumes less power during normal operation than any other battery backup in its class, saving you money on your electricity bill. Coupled with all the standard features of the Back-UPS series, the 550 is the perfect unit to protect your productivity from the constant threat of bad power and lost data.

Product Features:



- 1 **4 "Battery Backup & Surge Protected" Outlets** keep a CPU, monitor and other critical devices running when the power goes out or fluctuates outside safe levels.
- 2 **4 "Surge Only" Outlets** provide surge protection for your non-critical devices.
- 3 **PowerChute Software** lets you use your computer to access additional power protection and management features:
 - Preserves your work, shuts down system during outages
 - Restarts your system, minimizing work disruptions
 - Enables customization of your Back-UPS settings
 - Monitors and displays power and battery status
- 4 **Data Line Surge Protection** guards against surges and spikes traveling over an analog phone line.
- 5 **LED Status Indicator and Audible Alarms.**
- 6 **Ultra Efficient Electrical Design, RoHS compliance** and use of all recyclable packaging materials minimize impact on the environment and maximize efficiency.
- 7 **Building Wiring Fault Indicator** lets you know if there are problems in your building's wiring.
- 8 **Push Button Circuit Breaker** enables quick recovery from overload.
- 9 **Automatic Diagnostic Testing** ensures your unit is ready when you need it.
- 10 **3 Yr Warranty, \$75,000 Equipment Protection Policy, free technical phone and online support, Data Recovery Services**



Back-UPS 550 Specifications

Model Number	BE550G
Output	
Output Capacity	550 VA / 330 Watts
Output Voltage, Frequency (On utility)	120V, 50 or 60Hz (auto-sensing)
Output Voltage, Frequency (On battery)	115V +/-8%, 50 or 60 Hz +/-0.1% (auto-sensing)
Output Connections	8 total NEMA 5-15R outlets: 4 battery backup & surge 4 surge protection only
Waveform Type	Stepped Approximation to Sine Wave
Input	
Input Voltage, Frequency	120V, 50 or 60 Hz
Input Connection	5 ft cord with right angle plug (NEMA 5-15P)
Surge Protection	
AC Power Surge Protection	All outlets
Data Line Surge Protection	Analog phone line, RJ-11 (single line, 2-wire). For phone, fax, modem, DSL.
Physical	
Unit Dimensions (H x W x D)	3.5" x 12.0" x 7.0"
Unit Weight	13.0 lbs
Shipping Dimensions (H x W x D)	5.5" x 17.25" x 9.5"
Shipping Weight	14.3 lbs
Color	Black
UPC Code	731304258940
Battery	
Battery Type	Maintenance-free, sealed lead-acid battery, leakproof
Management	
Alarms	Visual (LED) and audible alarms
Auto-Shutdown Software	PowerChute Personal Edition (via USB interface)
Safety	
Certification/Approvals	FCC Part 15 Class B, FCC Part 68, TUV, UL 1778

APC by Schneider Electric

132 Fairgrounds Rd
West Kingston, RI 02892
Tel: 800-800-4272
www.apc.com

