

WIRELESS USB PRINT SERVER

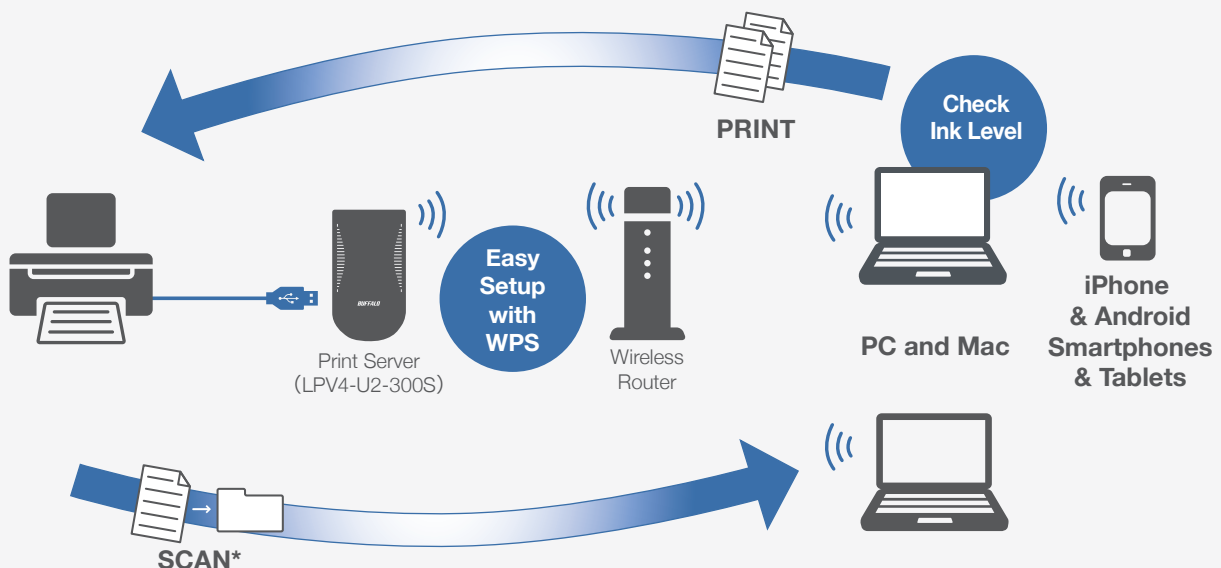


Buffalo's Wireless USB Print Server offers a simple solution for adding a USB printer to your network wirelessly. Easily share a USB printer with multiple users over your wireless network and conveniently place your printer in a central location for easy access or hide it in a discreet location for less clutter. The LPV4-U2-300S is easy to set up and it works with most USB printers, offering two-way communication with a printer status indicator and scanner support for multifunction printers. Additionally, LPV4-U2-300S offers ePrint app support for smartphone and tablet users. Print photos, contacts, calendar appointments, emails, memos and more from your iOS and Android mobile devices with this app from Microtech.

FEATURES

- Share a USB printer over your wireless network
- 802.11n provides transfer speeds up to 300 Mbps
- Connects to your network wirelessly
- Simple and quick installation
- 10/1000 Fast Ethernet LAN port
- ePrint App support for tablets and smartphones
- Supports multifunction printers
- Two-way communication

Easy wireless printing and scanning!

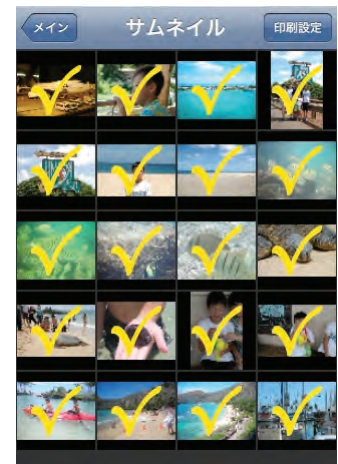


*Scanning is not supported for iPhone and Android smartphones.

Smartphone & Tablet App

ePrint app from Microtech allows you to print photos, contacts, calendar appointments, emails, memos and more from your iOS® and Android™ tablet and smartphone devices.

Download free and paid apps on iTunes® and Google Play.



MODEL

LPV4-U2-300S

BOX CONTENTS

LPV4-U2-300S, AC Adapter, Setup Guide, USB Cable, Warranty Statement

SPECIFICATIONS

WLAN INTERFACE

Standard Compliance:	IEEE802.11n/g/b
Frequency Band:	2.4 GHz
Access Mode:	infrastructure mode
Antenna:	2 Internal Antennas
Streams (Tx x Rx):	2 x 2
Wireless Security:	WPA2-PSK(AES), WPA-PSK9AES, (TKIP), 128/64-bit WEP

WAN INTERFACE

Standard Compliance:	IEEE802.3u(100 Base-TX), IEEE802.3(10 Base-T)
Speed and Flow Control:	10/100 Mbps
Number of Ports:	1
Connector Type:	RJ-45

USB INTERFACE

Interface:	USB 2.0
Number of Ports:	1
Data Transfer Rates:	480 Mb/s

24/7 TECH SUPPORT | 3 YEAR WARRANTY

(866) 752-6210 | USA & Canada Only

*300 Mb/s is the maximum wireless signal rate derived from IEEE 802.11n standard specifications achievable using two streams of 150 Mb/s. Actual data throughput and range will vary depending upon network conditions and environmental factors, including volume network traffic, building and construction and network overhead. Maximum speed and range is achievable when used with same enhanced mode technology.

©2013 BUFFALO INC. All rights reserved. BUFFALO and BUFFALO logo are either trademarks or registered trademarks of MELCO HOLDINGS INC. DriveStation and DriveStation logo are either trademarks or registered trademarks of BUFFALO INC. or its affiliates in the United States and other countries. The names and logos of other companies mentioned herein belong to their respective owners.