



### **Overview**

NetWay1DWPMH is an outdoor managed single port midspan injector that provides Hi-PoE (60W), PoE+ (30W), and PoE (15W). It includes built-in IP management which facilitates remote device reset/control and status monitoring. The unit is ideal for use with outdoor IP cameras and PTZs, WiMAX modems and WLAN access points. NetWay1DWPMH features a lightweight NEMA 4/4X IP66-11 rated enclosure that can be wall or pole mounted. Enclosure is pre-drilled with three (3) 5/8" wiring inlets, and NEMA rated glands are included. The unit operates at 115VAC or 230VAC input.



### **Specifications**

#### **Input:**

- 115VAC, 60Hz, 1.2 amp or  
230VAC, 50/60Hz, 0.75 amp.

#### **Power Output:**

- Maximum power: Hi-PoE (60W). Power product using all 4 pairs for 60W.
- IEEE 802.3at (30W) & IEEE 802.3af (15W) compliant.
- Integral surge protection.

#### **Ethernet:**

- Connectivity: RJ45, auto-crossover.
- Wire type: 4-pair Cat5e or higher cable.
- Distance: up to 100m.
- Speed: 10/100/1000mbps, half/full duplex, auto negotiation.

#### **Applications:**

- Provides PoE/PoE+ and Hi-PoE for cameras/devices.
- Auto detection and protection of legacy non-PoE cameras/devices.

#### **Electrical:**

- Operating Temperature:  
30W: -22°F to 158°F (-30°C to +70°C).  
60W: -22°F to 131°F (-30°C to +55°C).

#### **Electrical (cont'd):**

- Storage Temperature:  
-22°F to 185°F (-30°C to +85°C) Storage.
- Humidity: 20 to 85%, non-condensing.
- System AC input VA requirements:  
115VAC: 138VA.  
230VAC: 172.5VA.

#### **Features:**

- Port status LEDs.
- Unit is complete with a weatherproof enclosure and three (3) wire glands.

#### **Mechanical:**

- Unit can be wall or pole mounted.
- NEMA 4/4X, IP66-11 Rated enclosure for outdoor use.
- Lightweight molded fiberglass reinforced polyester enclosure is corrosion resistant, non-conductive and does not contain halogens.
- Lockable stainless steel latch.
- Integral flanges simplify wall or pole mounting.
- Enclosure Dimensions (H x W x D approx.):  
9.32" x 7.32" x 4.92" (236.7mm x 185.9mm x 125mm)
- Product weight (approx.): 2.2 lbs. (1.0 kg).
- Shipping weight (approx.): 3.2 lbs. (1.45 kg).

### **Agency Approvals**

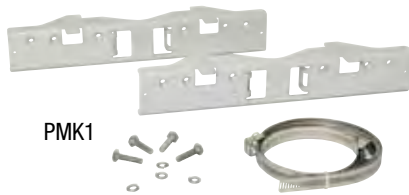


UL/CUL Listed for Information Technology Equipment (UL 60950-1),  
Information Technology Equipment to be installed Outdoors (UL 60950-22).



European Conformity

### **PMK1 Pole Mount Kit (order separately)**



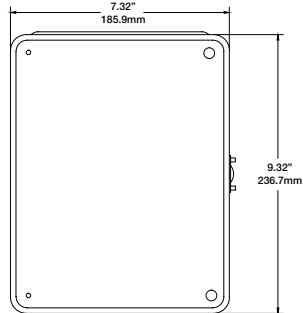
PMK1 pole mount kit is designed to simplify installation of outdoor units.

- Accommodates 2" - 8" (diameter) poles.
- Kit includes:
  - Two (2) powder coated steel mount brackets.
  - Four (4) stainless steel bolts.
  - Four (4) stainless steel lock washers.
  - Two (2) wormgear quick release straps.

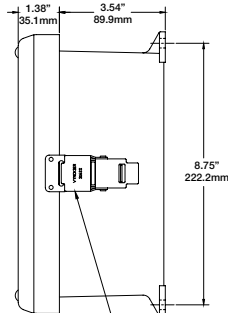
### **Enclosure Dimensions (H x W x D approximate):**

9.32" x 7.32" x 4.92" (236.7mm x 185.9mm x 125mm)

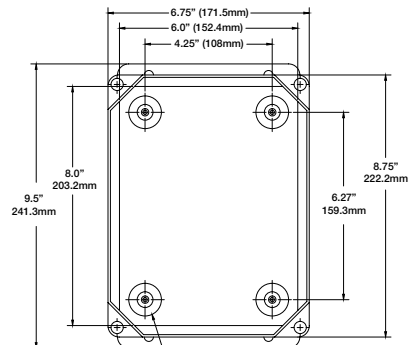
FRONT VIEW



RIGHT SIDE VIEW



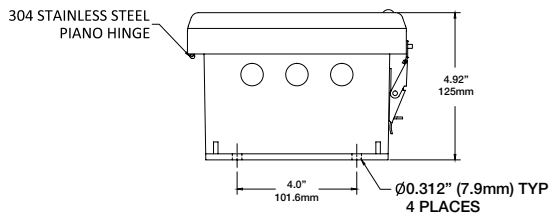
FRONT VIEW  
COVER - REMOVED



316 STAINLESS STEEL  
PADLOCK LATCH ATTACHED  
WITH RIVETS, Ø0.375" (9.5mm)  
PADLOCK EYE

10-32 X 0.25" (6.4mm)  
4 PLACES

END VIEW



END VIEW  
COVER - REMOVED

