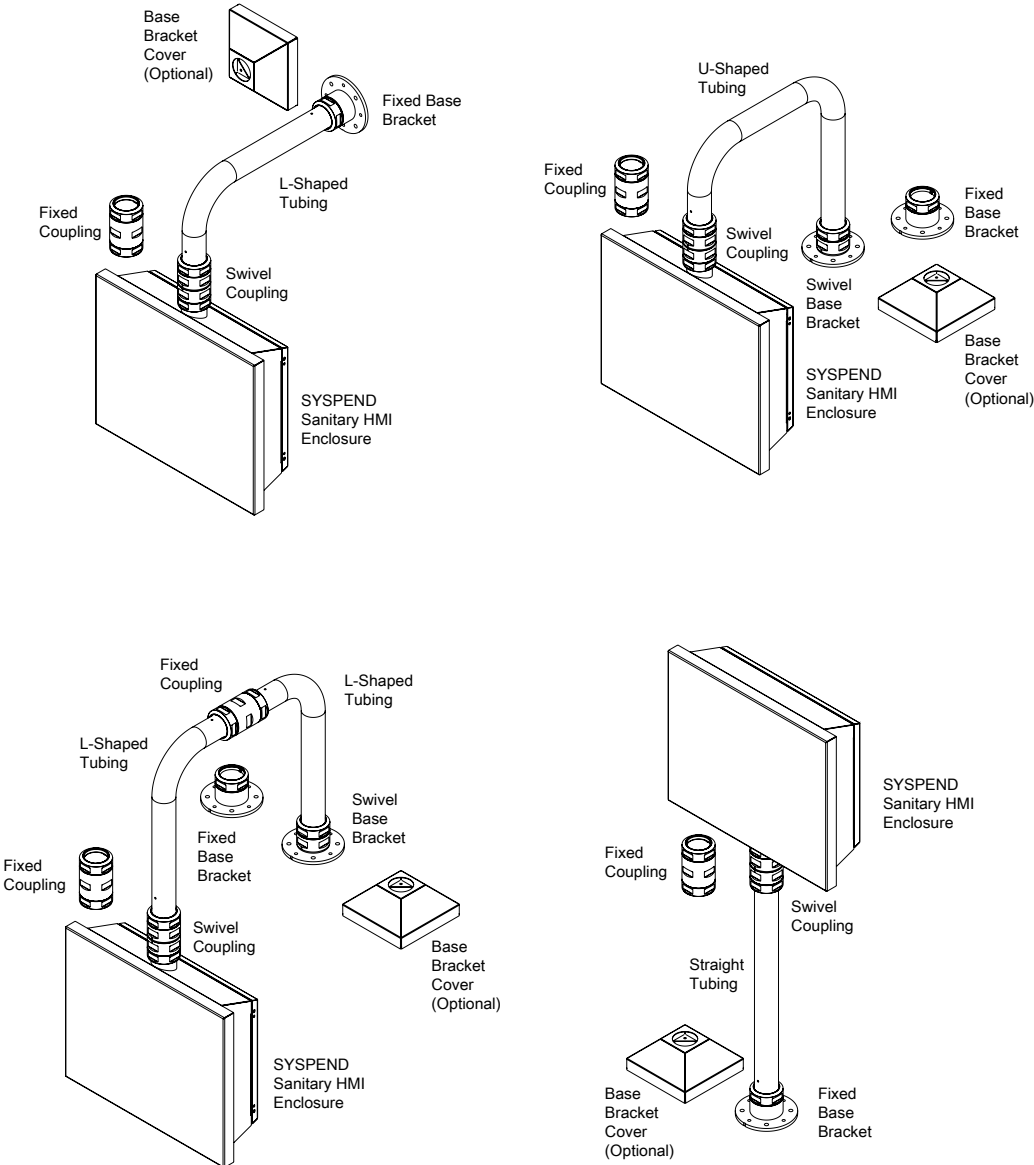


**SYSPEND HMI SANITARY SYSTEM OVERVIEW (S-251366)**

The SYSPEND Sanitary HMI (Human-Machine Interface) System is a Type 304 stainless steel enclosure series and suspension system designed to enclose, protect and suspend lightweight HMI devices up to a maximum load of 90 lb. (40.8 kg) in NEMA Type 4X environments.

The system features a modular design for application versatility and is specifically designed to meet the demanding needs of sanitary environments. The entire system meets Type 4X and IP69K requirements for high-pressure, high-temperature washdown applications.



89047417

## SYSPEND HMI SANITARY ENCLOSURE, TYPE 4X (S-251368)



### INDUSTRY STANDARDS

UL 508A Listed; Type 4, 4X, 12; File No. E61997  
cUL Listed per CSA C22.2 No 94; Type 4, 4X, 12; File No. E61997

NEMA/EMAC Type 4, 4X, 12  
CSA File No. 42186; Type 4, 4X, 12  
IEC 60529, IP66, IP69K

### APPLICATION

Specifically designed to house process control equipment in sanitary washdown environments, particularly food and beverage manufacturing. The enclosure features many clean design elements and meets Type 4X and IP69K requirements for high-pressure, high-temperature washdown applications.

### FEATURES

- Enclosure provides modern, flat-screen monitor-style aesthetics
- Integrated side handles allow for easy repositioning of enclosure
- Fully concealed gasket area provides complete protection in washdown environments
- 20-degree sloped top facilitates runoff of water and cleaning solutions and prohibits the placement of objects on the top of the enclosure
- Slanted flange trough collar prohibits pooling of fluids along the top edge of the enclosure opening
- Enclosure can be flipped for either pendant or pedestal mounting
- Hinges are shielded by door
- Suspension arm adapter provided with enclosure; provides means of attachment to the SYSPEND Sanitary Suspension System and SYSPEND VHDS-Motion Arm
- Suspension arm adapter can be installed backwards to provide 40-degree tilt for pedestal applications

- Internal support plate included with each enclosure provides extra rigidity for suspension mounting
- Flat area provided for installing optional H2OMIT Vent Drain to provide means of removing condensed moisture from the enclosure
- Optional adapter available for mounting enclosure to the SYSPEND VHDS-Motion arm

### SPECIFICATIONS

- Constructed from 1.2-mm thick (18 gauge) Type 304 stainless steel
- Seams continuously welded and ground smooth
- One-piece, closed-cell silicone gasket
- Bonding provision on door; grounding stud on body
- Door secured with two stainless steel quarter-turn latches with flush slotted insert
- Panel studs on door fit optional NEMA-style panels
- Furnished hardware kit consists of illustrated instruction sheet, grounding hardware, internal support plate, suspension arm adapter and hardware for attaching the support plate and adapter

### FINISH

External surfaces have a #3 brushed finish

### MODIFICATION AND CUSTOMIZATION

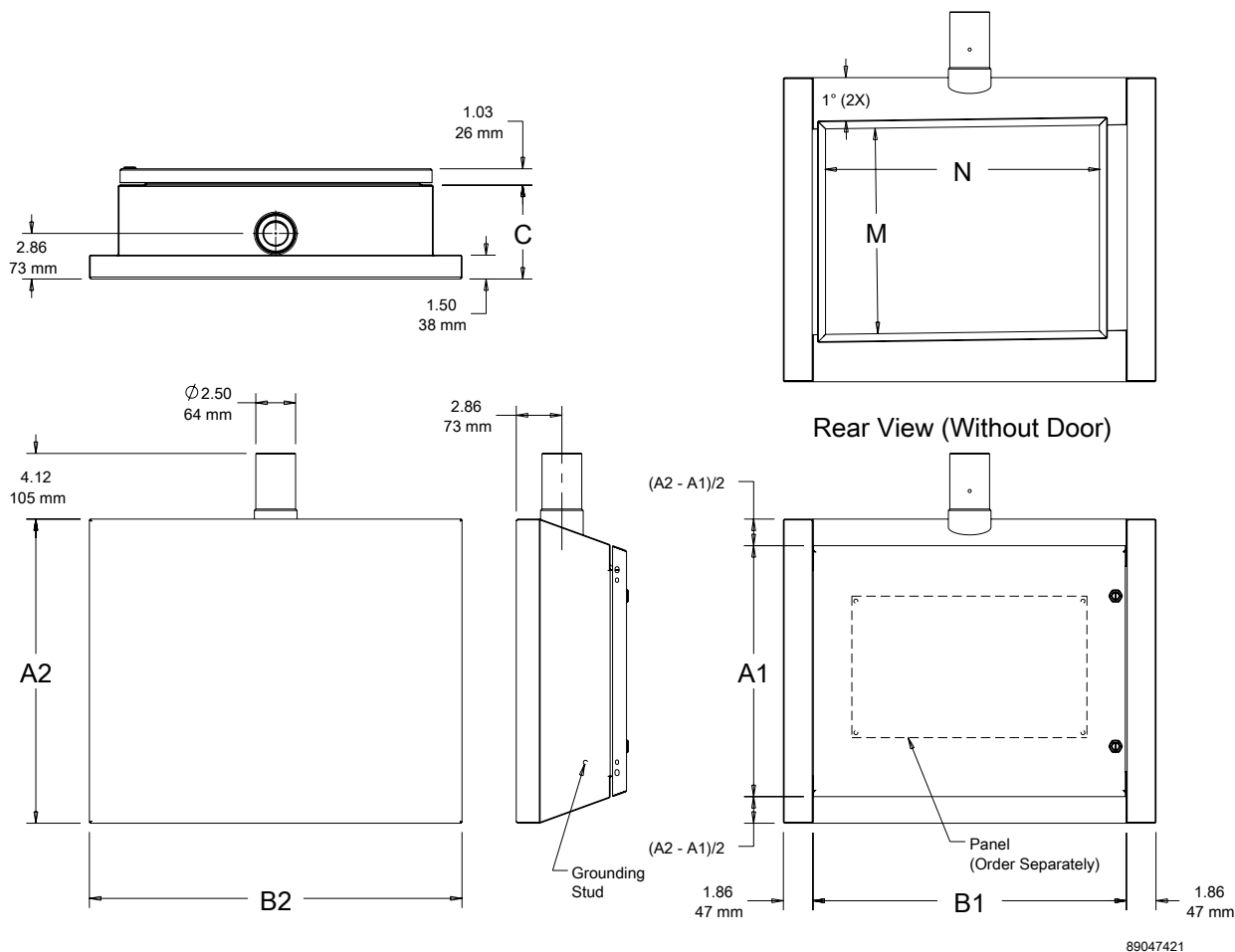
Hoffman excels at modifying and customizing products to your specifications. Contact your local Hoffman sales office or distributor for complete information.

### BULLETIN: VM9

### Standard Product

Catalog Number	AxByC mm/in.	A1 mm/in.	B1 mm/in.	A2 mm/in.	B2 mm/in.	M x N mm/in.	Steel Panel	Product Weight (kg)	Product Weight (lb.)
S30301SSS	300 x 300 x 150	300	300	385	394	228 x 238	A8P6	6.9	15.3
	11.81 x 11.81 x 5.91	11.81	11.81	15.17	15.53	8.97 x 9.35			
S30401SSS	300 x 400 x 150	300	400	385	494	228 x 338	A10P8	8.0	17.7
	11.81 x 15.75 x 5.91	11.81	15.75	15.17	19.46	8.97 x 13.29			
S40401SSS	400 x 400 x 150	400	400	485	494	328 x 337	A12P10	9.4	20.7
	15.75 x 15.75 x 5.91	15.75	15.75	19.11	19.46	12.92 x 13.26			
S40501SSS	400 x 500 x 150	400	500	485	594	323 x 437	A16P10	10.7	23.6
	15.75 x 19.68 x 5.91	15.75	19.68	19.11	23.40	12.92 x 17.20			
S50501SSS	500 x 500 x 150	500	500	585	585	428 x 48	A16P10	12.2	27.0
	19.68 x 19.68 x 5.91	19.68	19.68	23.04	23.40	16.87 x 17.25			
S50601SSS	500 x 600 x 150	500	600	585	694	428 x 538	A18P16	13.7	30.2
	19.68 x 23.62 x 5.91	16.68	23.62	23.04	27.34	16.87 x 21.19			
S30302OSS	300 x 300 x 200	300	300	421	394	233 x 237	A8P6	7.8	17.2
	11.81 x 11.81 x 7.87	11.81	11.81	16.59	15.53	9.15 x 9.33			
S30402OSS	300 x 400 x 200	300	400	421	494	233 x 337	A10P8	9.0	19.9
	11.81 x 15.75 x 7.87	11.81	15.75	16.59	19.46	9.15 x 13.26			
S40402OSS	400 x 400 x 200	400	400	521	494	332 x 338	A12P10	10.5	23.1
	15.75 x 15.75 x 7.87	15.75	15.75	20.52	19.46	13.09 x 13.29			
S40502OSS	400 x 500 x 200	400	500	521	594	332 x 438	A16P10	11.9	26.2
	15.75 x 19.68 x 7.87	15.375	19.68	20.52	23.40	13.09 x 17.23			
S50502OSS	500 x 500 x 200	500	500	621	594	432 x 438	A16P10	13.5	29.8
	19.68 x 19.68 x 7.87	19.68	19.68	24.46	23.40	17.01 x 17.23			
S50602OSS	500 x 600 x 200	500	600	621	694	432 x 538	A18P16	15.1	33.3
	19.68 x 23.62 x 7.87	19.68	23.62	24.46	27.34	17.01 x 21.17			

Enclosure dimensions are based upon the rear door; non-usable space on front face provides required area for heat dissipation.



**SYSPEND HMI SANITARY SYSTEM (S-251384)**

**INDUSTRY STANDARDS**

Maintains NEMA Type 4, 4X and 12 and IEC IP69K enclosure ratings when properly installed per Hoffman instructions.

**APPLICATION**

Specifically designed to support the SYSPEND Sanitary HMI Enclosure in sanitary washdown environments, particularly food and beverage manufacturing. The suspension system supports up to 90 lb. (40.8 kg) at 3.3 ft. (1 m). Its modular design with multiple tube lengths and bent tubes allows for application versatility. The entire system meets Type 4X and IP69K requirements for high-pressure, high-temperature washdown applications.

**FEATURES**

- Type 304 stainless steel construction provides corrosion resistance and ease of cleaning
- SYSPEND-LOK attachment method prevents tubes from turning and pulling out of fittings and provides a water-tight connection
- Straight, L- and U-shaped tubes available in various lengths to provide design flexibility

- Swivel and fixed couplings provide rigid connection point between tubes or between tube and enclosure
- Swivel and fixed base brackets provide secure attachment to wall, floor or machine with easy leveling capability
- Swivel fittings provide 330-degree rotation
- Optional base bracket cover can be used on wall, floor or machine to cover exposed hardware on fixed base bracket

**SPECIFICATIONS**

- Tubes and fittings constructed of Type 304 stainless steel
- SYSPEND-LOK Wrench Head included with each fitting to secure fittings to tubes

**FINISH**

External surfaces have a #3 brushed finish

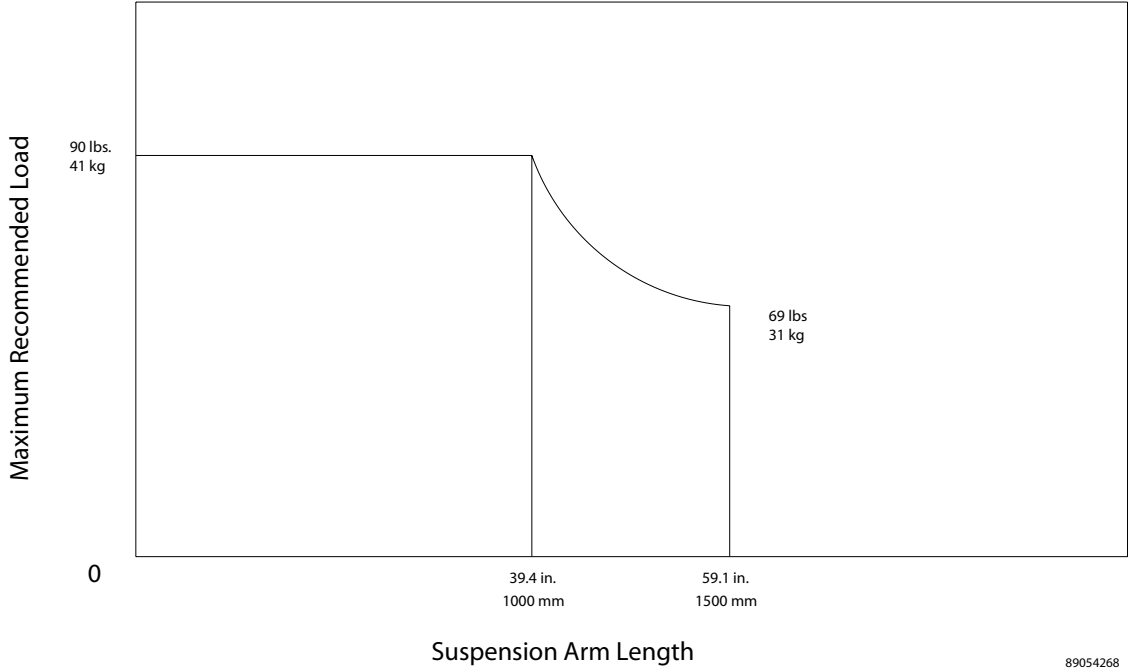
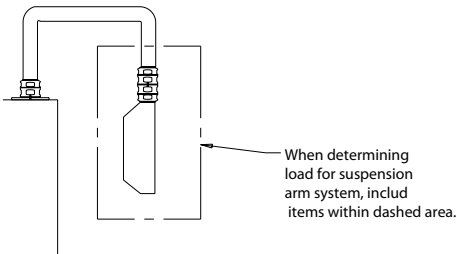
**MODIFICATION AND CUSTOMIZATION**

Hoffman excels at modifying and customizing products to your specifications. Contact your local Hoffman sales office or distributor for complete information.

SYSTEM LOAD CAPACITY (S-251411)

The SYSPEND Sanitary HMI System load graph is the result of load capacity tests. Please contact Hoffman for specific application information.

Load Diagram



## SYSPEND VHDS-MOTION ARM ADAPTER (S-251381)

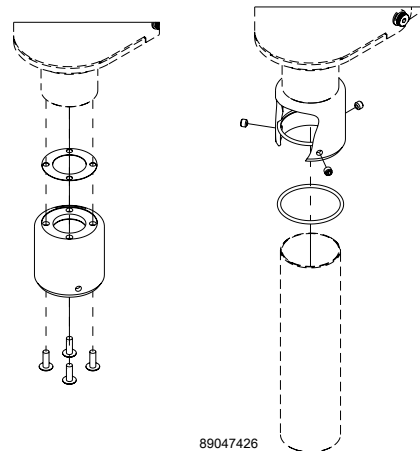
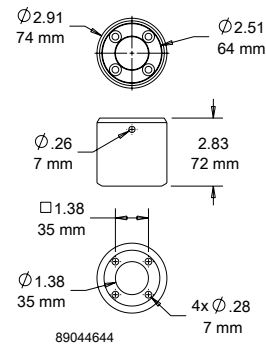


Attaches the SYSPEND Sanitary HMI Enclosure to the VHDS-Motion Arm.

- Type 304 stainless steel
- Attaches with set screws to the SYSPEND Sanitary HMI Enclosure
- Bolts directly to the VHDS-Motion Arm (only compatible with VHDS26 and VHDS36 models with revision level A or greater)

BULLETIN: VM9

Catalog Number	Description	Weight (kg)	Weight (lb.)
SVHDSA	SYSPEND VHDS-Motion Arm Adapter	.73	1.6

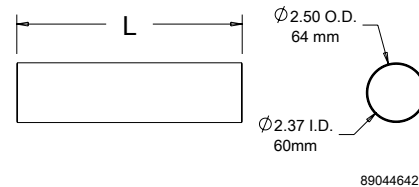


## STRAIGHT TUBING (S-251388)



- Type 304 polished stainless steel
- Outer diameter of 64 mm (2.50 in.)
- Inner diameter of 60 mm (2.37 in.)
- 2-mm (.06-in.) wall thickness

BULLETIN: VM9



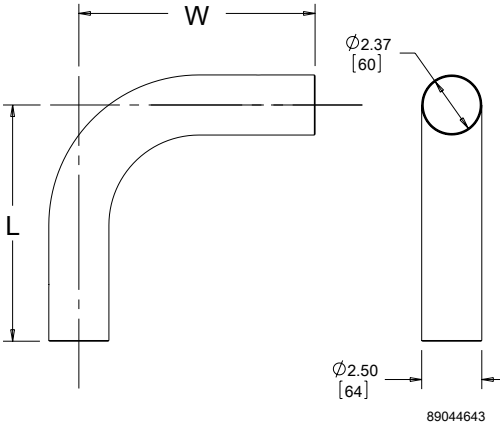
Catalog Number	L (mm)	L (in.)	Weight (kg)	Weight (lb.)
ST250SS	250	9.84	.45	1.0
ST500SS	500	19.68	1.61	3.55
ST750SS	750	29.53	2.27	5.0
ST1000SS	1000	39.37	2.72	6.0
ST1250SS	1250	49.21	3.88	8.55
ST1500SS	1500	59.06	4.58	10.1

L-SHAPED TUBING (S-251390)



- Type 304 polished stainless steel
  - Outer diameter of 64 mm (2.50 in.)
  - Inner diameter of 60 mm (2.37 in.)
  - 2-mm (.06-in.) wall thickness
- BULLETIN: VM9

Catalog Number	L mm/in.	W mm/in.	Weight (kg)	Weight (lb.)
ST250250SS	250	250	1.41	3.1
	9.84	9.84		
ST500240SS	500	240	2.20	4.85
	19.68	9.45		
ST500500SS	500	500	3.28	7.24
	19.68	19.68		
ST1000500SS	1000	500	5.76	12.7
	39.37	19.68		

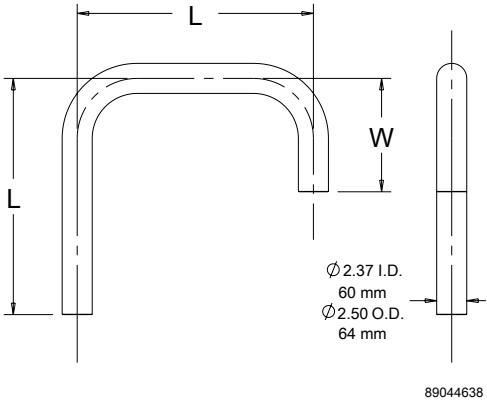


U-SHAPED TUBING (S-251396)



- Type 304 polished stainless steel
  - Outer diameter of 64 mm (2.50 in.)
  - Inner diameter of 60 mm (2.37 in.)
  - 2-mm (.06-in.) wall thickness
- BULLETIN: VM9

Catalog Number	L mm/in.	W mm/in.	Weight (kg)	Weight (lb.)
ST500240500SS	500	240	3.76	8.3
	19.68	9.45		
ST800500800SS	800	500	7.26	16.0
	31.50	19.68		



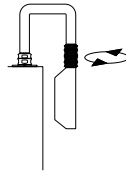


### SWIVEL COUPLING (S-251398)

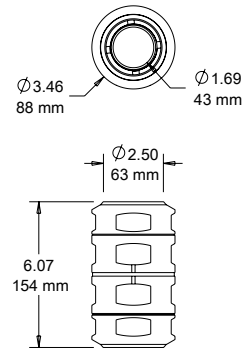


- Provides means of attaching enclosure to tube
- Allows enclosure to rotate 330-degrees
- SYSPEND-LOK attachment method prevents tubes from turning and pulling out of fittings and provides a water-tight connection
- Type 304 polished stainless steel
- Includes SYSPEND-LOK Wrench Head for attaching coupling to tubes (strap wrench or spanner wrench that opens to 80 mm or greater can also be used)

**BULLETIN: VM9**



Catalog Number	Description	Weight (kg)	Weight (lb.)
SSCSS	Swivel Coupling	4.54	10



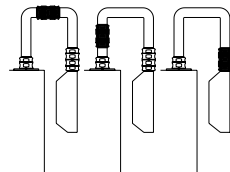
89044639

### FIXED COUPLING (S-251400)

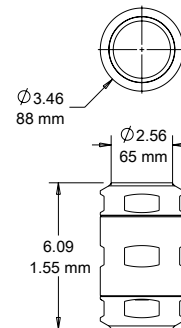


- Provides secure means of joining two tubes together
- Can also provide attachment of enclosure to tube when enclosure rotation is not desired
- SYSPEND-LOK attachment method prevents tubes from turning and pulling out of fittings and provides a water-tight connection
- Type 304 polished stainless steel
- Includes SYSPEND-LOK Wrench Head for attaching coupling to tubes (strap wrench or spanner wrench that opens to 80 mm or greater can also be used)

**BULLETIN: VM9**



Catalog Number	Description	Weight (kg)	Weight (lb.)
SFCSS	Fixed Coupling	3.54	7.5



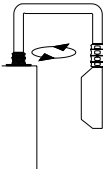
89044640

SWIVEL BASE BRACKET (S-251402)

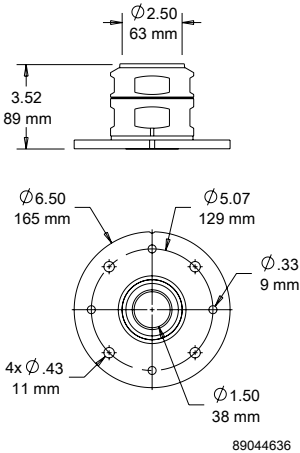


- Provides means of attaching tube to the floor or a machine
- Provides 330-degree rotation
- SYSPEND-LOK attachment method prevents tubes from turning and pulling out of fittings and provides a water-tight connection
- Type 304 polished stainless steel
- Includes SYSPEND-LOK Wrench Head for attaching base bracket to tubes (strap wrench or spanner wrench that opens to 80 mm or greater can also be used)
- Includes 4 set screws that provides means of leveling the entire suspension system
- Surface mounting hardware not included

BULLETIN: VM9



Catalog Number	Description	Weight (kg)	Weight (lb.)
SSBBS	Swivel Base Bracket	3.72	8.2

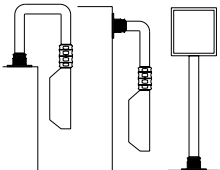


FIXED BASE BRACKET (S-251404)

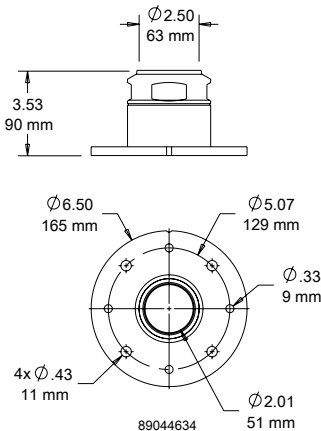


- Provides means of attaching tube to a wall, floor or machine
- Does not provide rotation
- SYSPEND-LOK attachment method prevents tubes from turning and pulling out of fittings and provides a water-tight connection
- Type 304 polished stainless steel
- Includes SYSPEND-LOK Wrench Head for attaching base bracket to tubes (strap wrench or spanner wrench that opens to 80 mm or greater can also be used)
- Includes 4 set screws that provide means of leveling the entire suspension system
- Surface mounting hardware not included
- Optional bracket cover available to hide all exposed mounting hardware

BULLETIN: VM9



Catalog Number	Description	Weight (kg)	Weight (lb.)
SFBBSS	Fixed Base Bracket	3.63	8

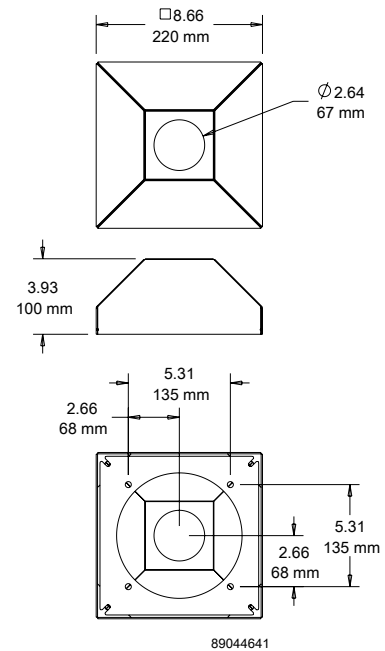


**BASE BRACKET COVER (S-251406)**

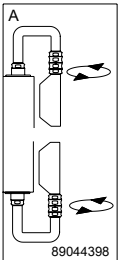

- Covers the fixed base bracket (not compatible with the swivel base bracket)
- Provides means of covering all exposed mounting hardware
- Simply snaps into place over the base bracket
- Type 304 polished stainless steel

**BULLETIN: VM9**

Catalog Number	Description
SBCSS	Base Bracket Cover

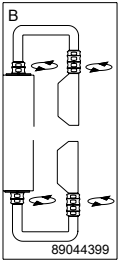


SYSPEND SANITARY ENCLOSURE SYSTEM CONFIGURATIONS (S-251408)



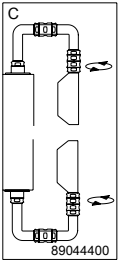
Description	Qty.	Catalog Number
Fixed Base Bracket	1	SFBBSS
Swivel Coupling	1	SSCSS
U-Shaped Tubing	1	ST500240500SS ST800500800SS

B



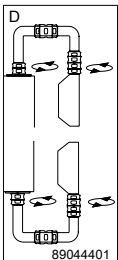
Description	Qty.	Catalog Number
Swivel Base Bracket	1	SSBBSS
Swivel Coupling	1	SSCSS
U-Shaped Tubing	1	ST500240500SS ST800500800SS

C

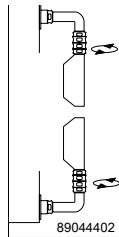


Description	Qty.	Catalog Number
Fixed Base Bracket	1	SFBBSS
Fixed Coupling	1	SFCSS
L-Shaped Tubing	2	ST250250SS ST500240SS ST500500SS ST1000500SS
Swivel Coupling	1	SSCSS

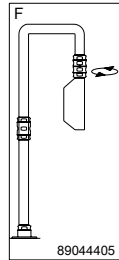
D



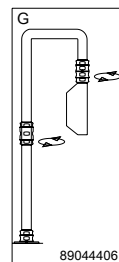
Description	Qty.	Catalog Number
Fixed Coupling	1	SFCSS
L-Shaped Tubing	2	ST250250SS ST500240SS ST500500SS ST1000500SS
Swivel Base Bracket	1	SSBBSS
Swivel Coupling	1	SSCSS



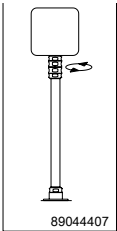
Fixed Base Bracket	1	SFBBSS
L-Shaped Tubing	2	ST250250SS ST500240SS ST500500SS ST1000500SS
Swivel Coupling	1	SSCSS

**F**


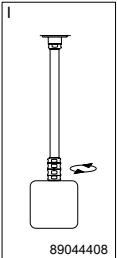
Description	Qty.	Catalog Number
Fixed Base Bracket	1	SFBBSS
Fixed Coupling	1	SFCSS
Swivel Coupling	1	SSCSS
Straight Tubing	1	ST250SS ST500SS ST750SS ST1000SS ST1250SS ST1500SS
U-Shaped Tubing	1	ST500240500SS ST800500800SS
Base Bracket Cover	1	SBCSS

**G**


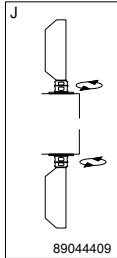
Description	Qty.	Catalog Number
Fixed Base Bracket	1	SFBBSS
Straight Tubing	1	ST250SS ST500SS ST750SS ST1000SS ST1250SS ST1500SS
Swivel Coupling	1	SSCSS
U-Shaped Tubing	1	ST500240500SS ST800500800SS
Base Bracket Cover	1	SBCSS



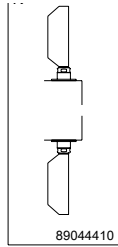
Fixed Base Bracket	1	SFBBSS
Straight Tubing	1	ST250SS
		ST500SS
		ST750SS
		ST1000SS
		ST1250SS
		ST1500SS
Swivel Coupling	1	SSCSS
Base Bracket Cover	1	SBCSS



<b>Description</b>	<b>Qty.</b>	<b>Catalog Number</b>
Fixed Base Bracket	1	SFBBSS
Straight Tubing	1	ST250SS
		ST500SS
		ST750SS
		ST1000SS
		ST1250SS
		ST1500SS
Swivel Coupling	1	SSCSS

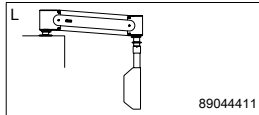


<b>Description</b>	<b>Qty.</b>	<b>Catalog Number</b>
Swivel base Bracket	1	SSBBSS

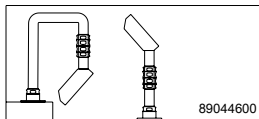


Description	Qty.	Catalog Number
Fixed Base Bracket	1	SFBBS

## L



Description	Qty.	Catalog Number
VHDS Motion Arm Adapter	1	SVHDSA



*Enclosure adapter can be flipped for angled viewing.*

Notes