

DACS OUTDOOR



INDUSTRY STANDARDS

UL Recognized

CE
Telcordia GR-487 capable

APPLICATION

- Outdoor telecommunications equipment
- Industrial automation
- Outdoor kiosk
- Outdoor displays
- OSP applications

FEATURES

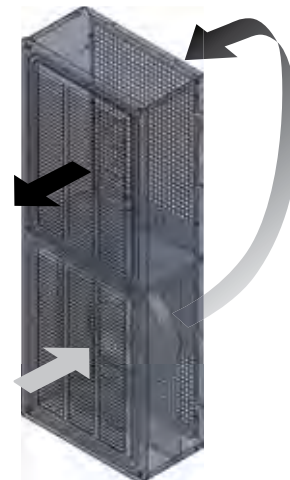
- Customizable solutions to meet any customer need
- Two models utilizing Hydrophobic GORE® filter
- Two models with MERV 12, pleated filter
- Standard power input: 48 VDC
- UL Listed to save time and money with agency approvals
- Power Cord included
- Easy to replace filters
- Broad operating temperature range -40 C to 55 C
- Every unit functionally tested before shipping
- Hydrophobic GORE® filter protects against salt and other corrosive agents
- Controller provides soft start and current limiting at start up
- Vibration resistant to withstand over-the-ground transportation of the telecom system
- Variable speed blowers standard on units for quiet running
- Controller provides fan speed control and temperature alarm

FINISH

- Standard Finish: Galvanized steel with RAL 7035 light-gray semi-textured powder coat paint

OPTIONS

- Custom Material: Aluminum, Stainless Steel, Mild Steel
- Custom Finish: Paint Color
- Custom Power Input: 24 VDC, 115 VAC, & 230 VAC
- Custom Sizes: Height 29 in. (737 mm) to 56 in. (1422 mm)



NOTES

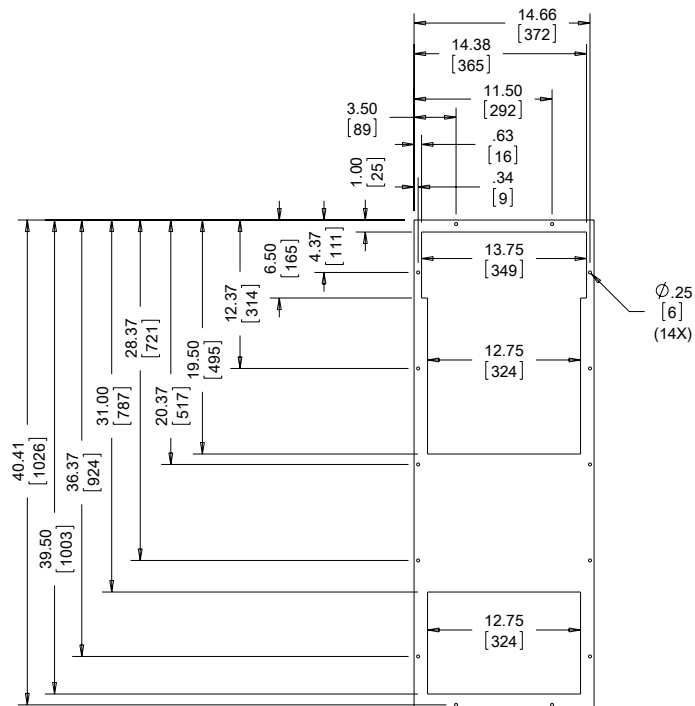
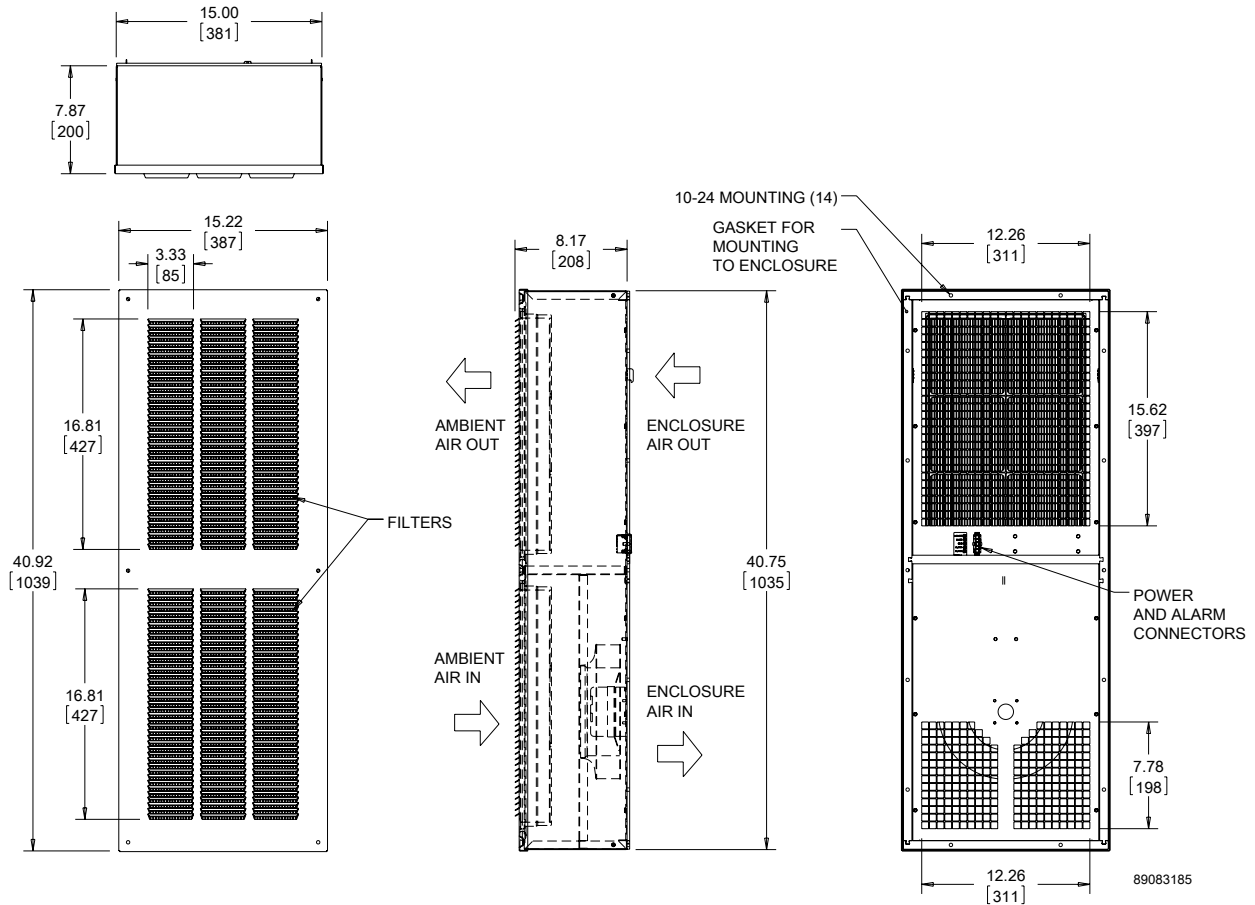
Visit www.HoffmanOnline.com to download 2D and 3D CAD drawings into the overall design of your electronic system.

GORE® is a registered trademark of W.L. Gore & Associates, Inc.

Performance Data **DACS**

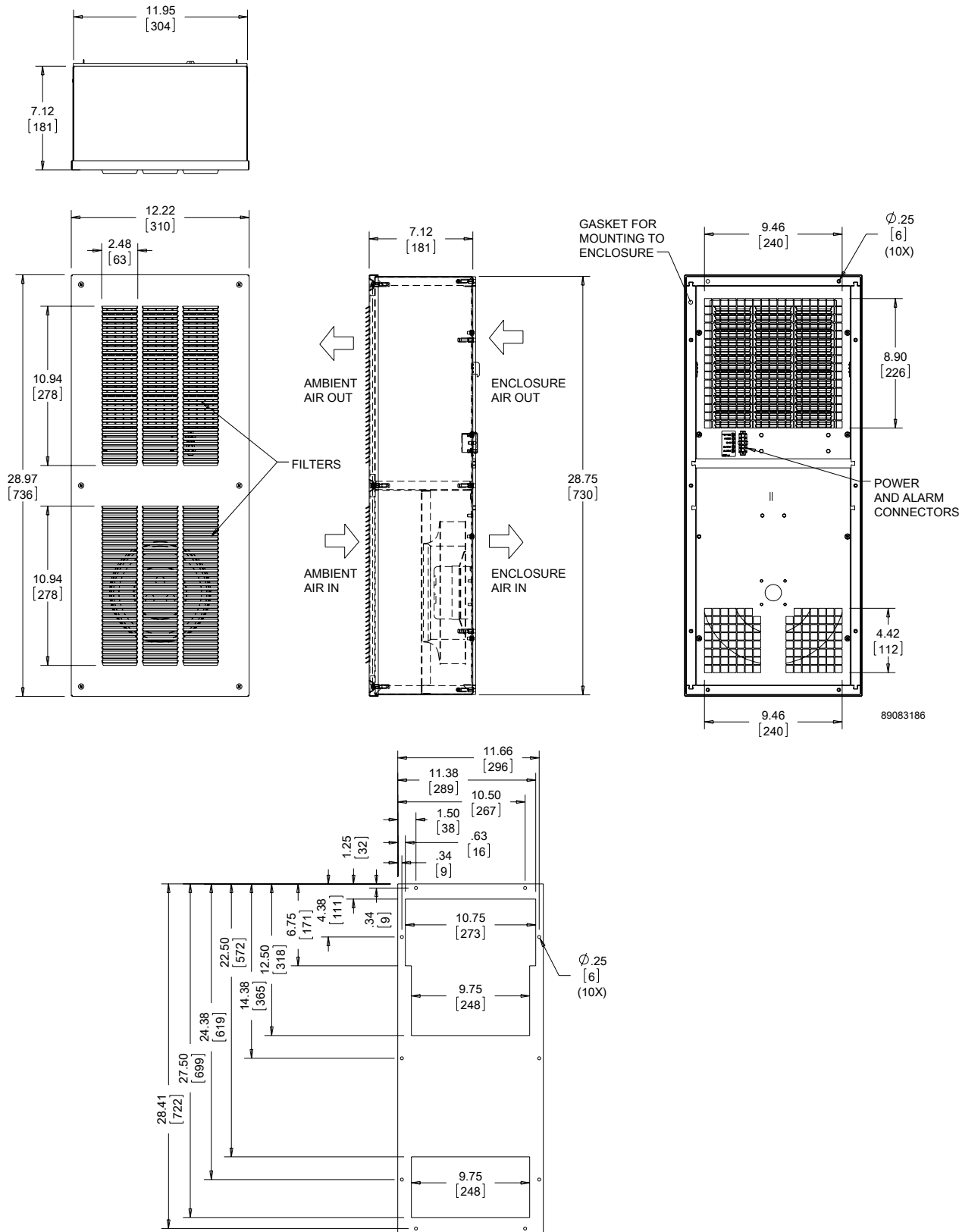
CATALOG NUMBERS				
	DCG4108548100	DCG2904248100	DCT5615048100	DCT3809448100
COOLING PERFORMANCE				
Nominal:				
Watts/°F	85	42	50	94
Watts/°C	152	75	270	170
Operating Temperature Range:				
Maximum (°F/°C)	131/55	131/55	131/55	131/55
Minimum (°F/°C)	-40/-40	-40/-40	-40/-40	-40/-40
Air Flow at 0 Static Pressure: (CFM/ m³/hr.)	265/450	130/221	470/799	300/510
ELECTRICAL DATA				
Rated Voltage (VDC)	48			
Operating Range (VDC)	40-60			
Max. Power Consumption (Watts)	159	159	192	173
Max. Nominal Current (Amps)	3.3	3.3	4.0	3.6
Agency Approvals	cUL Listed, CE			
ENCLOSURE PROTECTION				
UL Type	Type 3R			
CONTROLLER				
Description	Fan speed control and temperature alarm			
Factory Thermostat Setting (°F/°C)	104/40			
SOUND LEVEL				
At 1.5 Meters - Full Speed (dBA)	67.1	68.1	65.0	63.4
UNIT CONSTRUCTION				
Material	Galvanized Steel			
Finish	RAL 7035 light-gray, semi-textured powder-coat paint standard			
Filter Type	Hydrophobic GORE®		Pleated Filter Merv 12	
UNIT DIMENSIONS				
Height (in./mm)	40.75/1035	28.75/730	56/1422	38/965
Width (in./mm)	15/381	12/305	20/508	16/406
Depth (in./mm)	7.88/200	7.12/181	7/178	6/152
Weight (lb./kg)	50/22.7	40/18.1	65/29.5	38/17.2

DCG4108548100

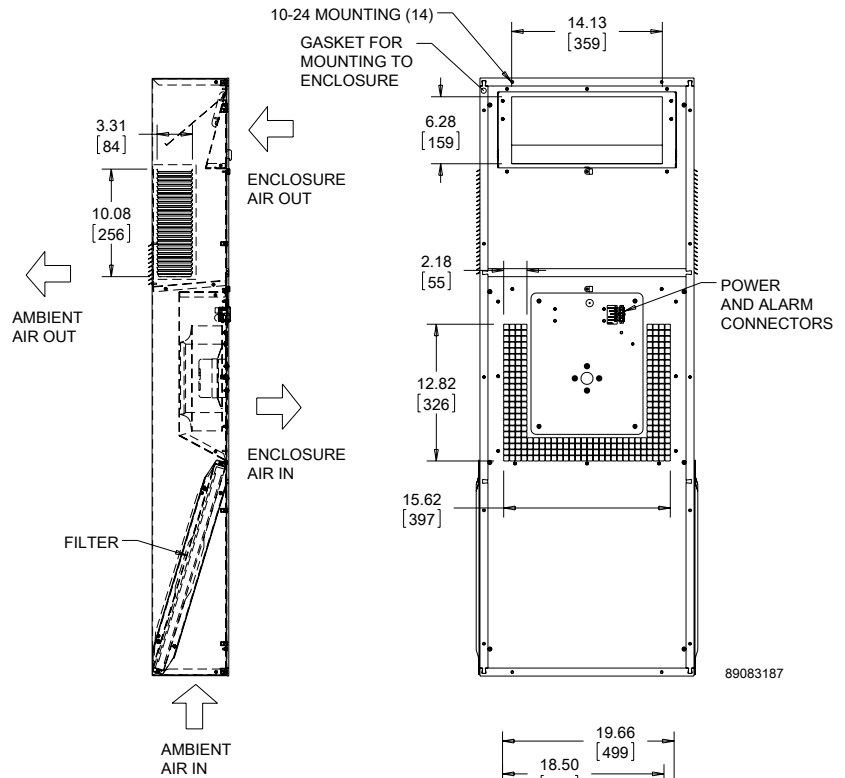
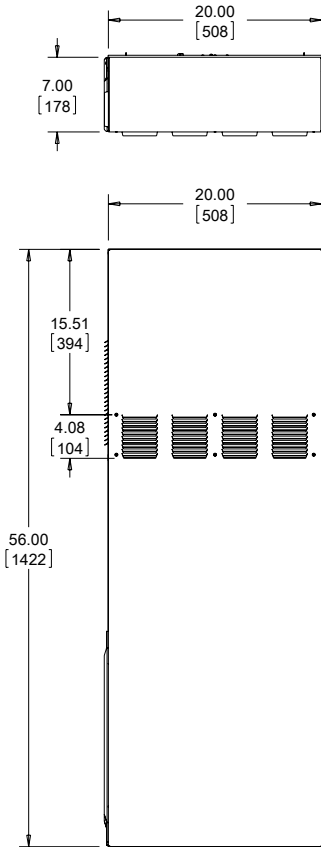


CUTOUT DIMENSIONS

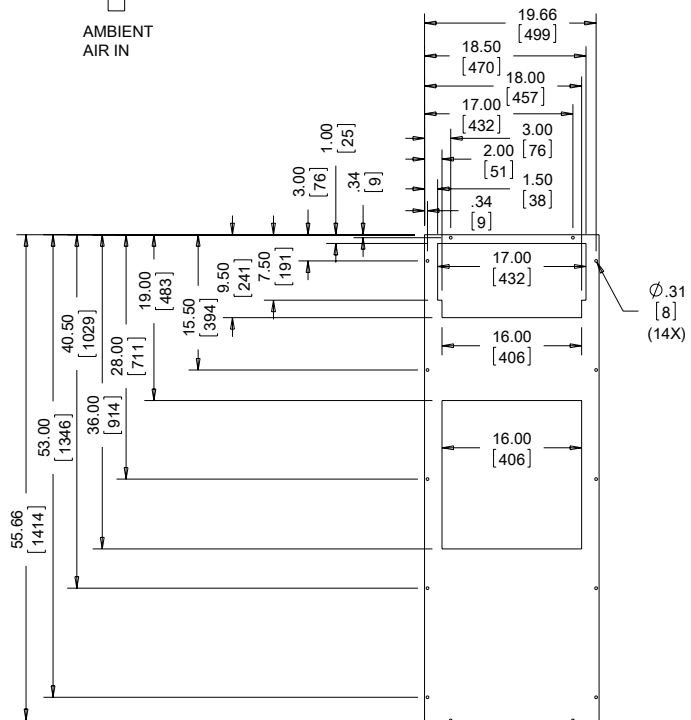
DCG2904248100



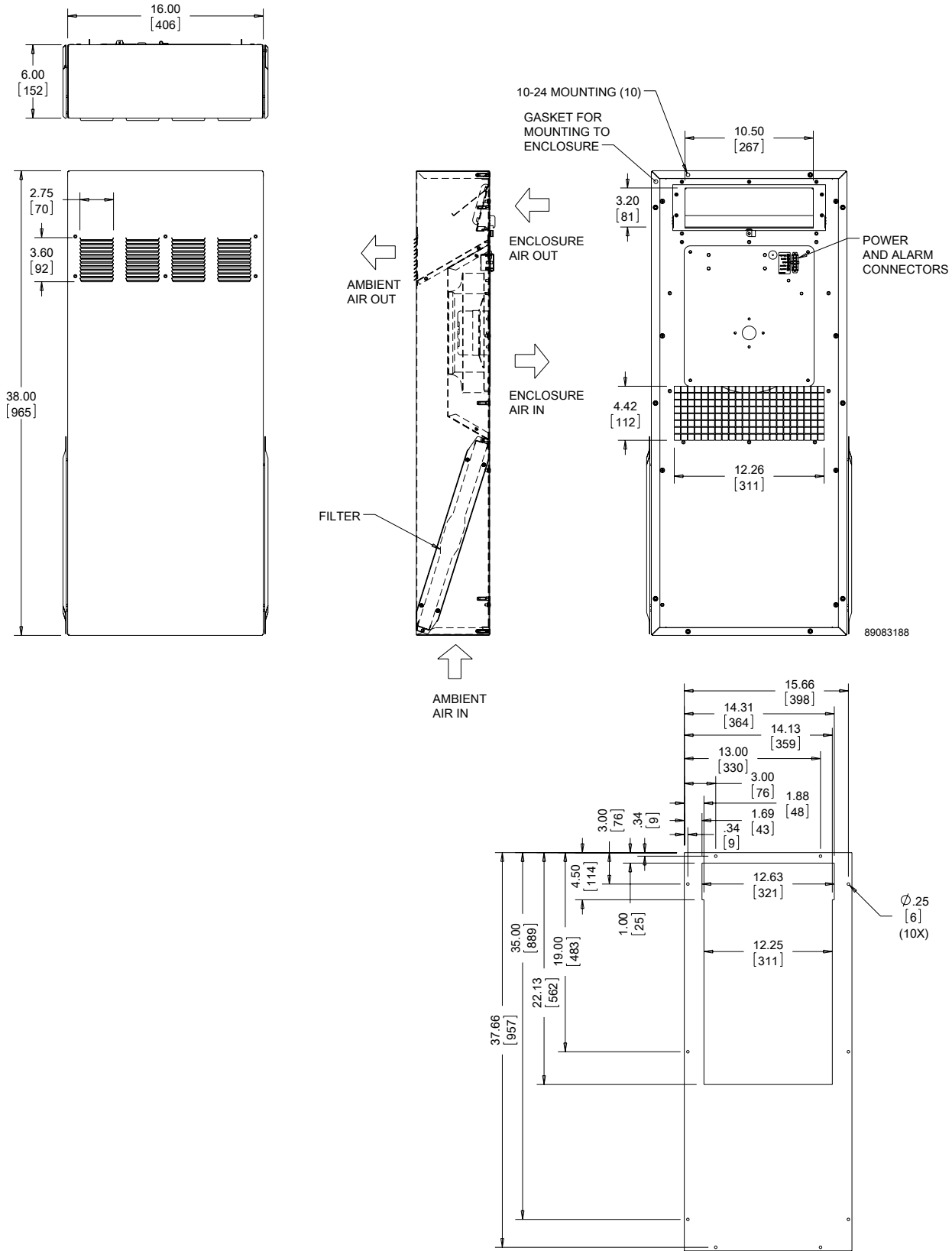
CUTOUT DIMENSIONS

DCT5615048100


89083187


CUTOUT DIMENSIONS

DCT3809448100



CUTOUT DIMENSIONS