

GENERAL PURPOSE STAINLESS STEEL TWO-DOOR FLOOR-MOUNT DISCONNECT ENCLOSURES, TYPE 4X



INDUSTRY STANDARDS

UL508A Listed; Type 3R, 4, 4X, 12; File No. E61997
cUL Listed per CSA C22.2 No. 94; Type 3R, 4, 4X, 12; File No. E61997

NEMA/EEMAC: Type 3R, 4, 4X, 12
IEC 60529, IP66
Meets NEMA Type 3RX requirements

APPLICATION

This disconnect enclosure is designed to house electronic controls and components. It provides protection from noncorrosive or mildly corrosive elements in both indoor and outdoor environments. Typical applications are in the food and beverage, packaging, water,

petroleum and chemical processing industries. Designed to house the most popular disconnect switches and circuit breakers.

FEATURES

- Seams continuously welded and ground smooth
- Seamless foam-in-place one-piece gasket provides water-, oil- and dust-tight seal against contaminants
- Heavy-duty three-point latching mechanism on each door, operated by Hoffman's black die-cast POWERGLIDE™ padlocking handle. Black die-cast quarter-turn latches with slotted insert provided on the top and bottom of each door.
- Master door is far right-hand door on all enclosures
- Master door handle provided with integral screwdriver defeater
- Mechanical interlock activated by master door prevents slave door from being opened first. Doors can be closed in any order.
- Concealed hinges provide 180-degree door opening and allow easy door removal and cleaning of hinge area
- Bolt-on 15-in.-high stainless steel floor stands
- Heavy-duty Type 316L stainless steel lifting eyes
- Collar studs on inside of enclosure back for optional mounting panels
- Removable centerpost for easy panel installation
- Bonding provisions on doors and ground studs on body
- No interior stiffeners to obstruct component mounting
- Provisions for mounting optional fluorescent light packages

SPECIFICATIONS

- 14 gauge doors and 12 gauge body from Type 304 stainless steel
- Flange trough collar on all four sides of door openings
- Data pocket is high-impact plastic attached with pressure-sensitive adhesive
- Preferred cutout on right-hand flange provides mounting for most disconnect operators

FINISH

Stainless steel enclosures are unpainted. External surfaces of front, sides, top and bottom have a #4 finish. Interior welds are not finished. Optional panels have white or conductive finish.

ACCESSORIES

See also *Accessories*.

Electric Heater
Electrical Interlocks
PANELITE™ Enclosure Lights Overview
Panels for Type 3R, 4, 4X, 12 and 13 Enclosures
Steel and Stainless Steel Window Kits

MODIFICATION AND CUSTOMIZATION

Hoffman excels at modifying and customizing products to your specifications. Contact your local Hoffman sales office or distributor for complete information.

BULLETIN: A4S2

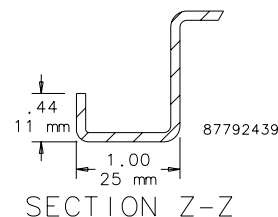
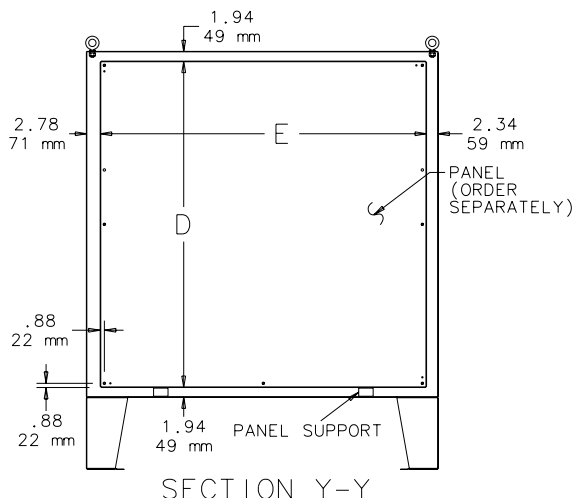
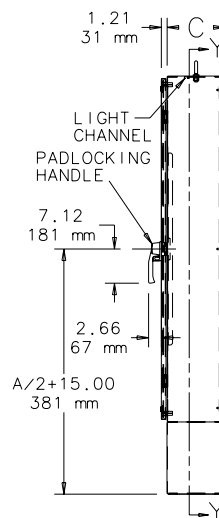
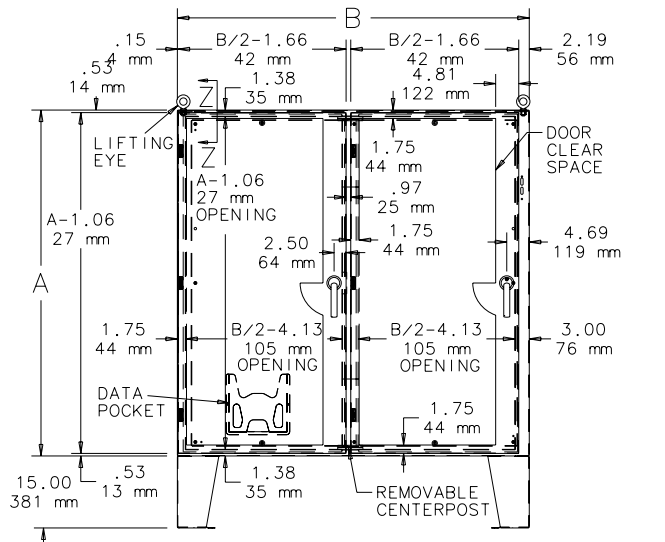
Standard Product

Catalog Number	AxBxC in./mm	Panel	Conductive Panel	Panel Size D x E in./mm	No. of Quarter-turn Latches
A60HX4912SSLPQT	60.06 x 49.31 x 12.06 1526 x 1252 x 306	A60P48	A60P48G	56.00 x 44.00 1422 x 1118	4
A60HX4918SSLPQT	60.06 x 49.31 x 18.06 1526 x 1252 x 459	A60P48	A60P48G	56.00 x 44.00 1422 x 1118	4
A60HX6112SSLPQT	60.06 x 61.31 x 12.06 1526 x 1557 x 306	A60P60	A60P60G	56.00 x 56.00 1422 x 1422	4
A60HX6118SSLPQT	60.06 x 61.31 x 18.06 1526 x 1557 x 459	A60P60	A60P60G	56.00 x 56.00 1422 x 1422	4
A72HX6112SSLPQT	72.06 x 61.31 x 12.06 1830 x 1557 x 306	A72P60	A72P60G	68.00 x 56.00 1727 x 1422	4
A72HX6118SSLPQT	72.06 x 61.31 x 18.06 1830 x 1557 x 459	A72P60	A72P60G	68.00 x 56.00 1727 x 1422	4
A72HX7312SSLPQT	72.06 x 73.31 x 12.06 1830 x 1862 x 306	A72P72	A72P72G	68.00 x 68.00 1727 x 1727	4
A72HX7318SSLPQT	72.06 x 73.31 x 18.06 1830 x 1862 x 459	A72P72	A72P72G	68.00 x 68.00 1727 x 1727	4
A72HX7324SSLPQT	72.06 x 73.31 x 24.06 1830 x 1862 x 611	A72P72	A72P72G	68.00 x 68.00 1727 x 1727	4

Purchase panels separately

All 24.12-in. (613-mm) and deeper enclosures using short connecting rods in the following models require a Hoffman platform assembly, catalog number ADSCPA, purchased separately. • ABB Controls flange-operated devices • Eaton Cutler-Hammer C361 devices • Eaton Cutler-Hammer C371 mechanisms which use C371E, F, G, K operating mechanism • General Electric Type TDA devices (see next paragraph for option) • Schneider Square D Class 9422 devices (see next paragraph for option)

The platform assembly can be omitted if long connecting rods are ordered in place of short connecting rods. • For Eaton Cutler-Hammer operating mechanisms C371E and C371F order catalog number C371CS1 connecting rod. For C371G and C371K order catalog number C371CS2 connecting rod. • For General Electric devices, order catalog number TDSR extended length drive rod • For Schneider Square D devices, order catalog number 9422-R2 extra long operating rod(s). Some devices require two rods. Consult factory for space occupied on panel when platform is used.



DISCONNECT MOUNTING SPACE

Disconnects will occupy space on panel shown by dimensions E1, F1, G1 and K. Wiring Space W1 is available when disconnect is installed in the enclosure.

See the *Technical Information* chapter for E1 Spacing by Enclosure Height for various disconnect switch manufacturers.

Refer to *National Electrical Code*®, 2005 article 430-10(b) for wiring space required for line side conductors to be connected to disconnect.

Verify your application to determine if wiring space is adequate.

All 24.12-in. (613-mm) and deeper enclosures using short connecting rods by the following manufacturers require a Hoffman platform assembly, catalog number ADSCPA, purchased separately.

- ABB Controls flange-operated devices
- Eaton Cutler-Hammer C361 devices
- Eaton Cutler-Hammer C371 mechanisms which use C371E, F, G, K operating mechanism (see Disconnect Enclosure Accessories)
- General Electric Type TDA devices (see Disconnect Enclosure Accessories)
- Schneider Square D® Class 9422 devices (see Disconnect Enclosure Accessories)

The platform assembly can be omitted if long connecting rods are ordered in place of short connecting rods.

- For Eaton Cutler-Hammer operating mechanisms C371E and C371F order catalog number C371CS1 connecting rod. For C371G and C371K order catalog number C371CS2 connecting rod.
- For General Electric devices, order catalog number TDSR extended length drive rod
- For Schneider Square D devices, order catalog number 9422-R2 extra long operating rod(s). Some devices require two rods.

Consult factory for space occupied on panel when platform is used.

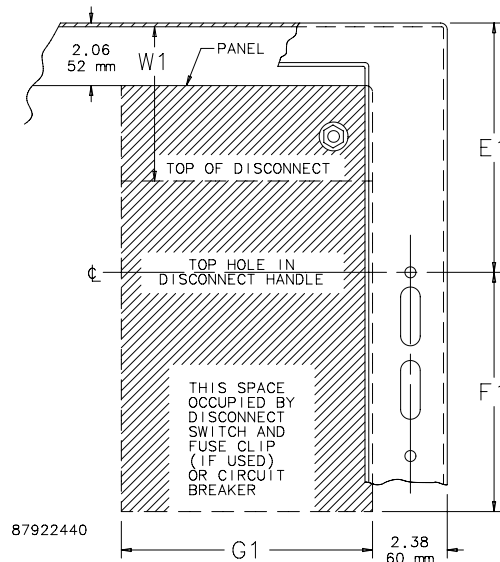
Be sure to match the disconnect device you are using with the correct enclosure size.

A Complete Assembly Consists of:

1. An enclosure
2. A panel
3. A disconnect device.

Consult the *Technical Information* chapter of this catalog for wire bend information and hoffmanonline.com for disconnect manufacturer information.

Disconnect switch (or circuit breakers), operating handle and operating mechanism are not furnished with enclosure.



Consult disconnect manufacturer or see Disconnect Ordering Information at hoffmanonline.com under Technical Resources for F1 and G1 dimensions of various brands of disconnects.

PREFERRED-CUTOUT OVERVIEW



APPLICATION

Enclosures having the preferred cutout are sized for use with up to 200 A disconnect switches and up to 400A circuit breakers unless otherwise specified. The preferred cutout accepts the smaller operating handle whose mounting hole centers are 4.688 in. apart. Preferred cutouts are standard in mild steel wall-mount enclosures, modular enclosures and some select large mild steel enclosures. They are also present on all standard stainless steel offerings.

Operator adapters for preferred cutouts must be ordered separately to be used with A21S, A28S4, WS2D and A4S enclosures.

Preferred cutouts are designed to house the following:

Allen-Bradley

- Bulletin 1494V disconnect switches with flange-mount variable-depth operating mechanisms and Bulletin 1494V flange-mount variable-depth operating mechanisms for circuit breakers
 - Bulletin 140U flexible cable operating mechanisms for 140U molded case circuit breakers
 - Bulletin 140G flexible cable and variable depth flange mounted molded case circuit breakers
 - Bulletin 1494C cable-operated disconnect switches with flange-mount handles
 - Bulletin 194RC cable-operated flange-mount handles for use with the NFPA 79 compliant 194R IEC rotary disconnect switches
- Allen-Bradley Bulletin 1494V-R1, -R2 and -W2 operating handles and Allen-Bradley Bulletin 1494F disconnect devices or Bulletin 1494D circuit breaker operators will NOT fit these enclosures.*

ABB Controls flange-mount variable-depth operating mechanisms for disconnect switches and circuit breakers. Also the cable version for circuit breakers.

Eaton Cutler-Hammer Type C361 flange-mount variable-depth operating mechanisms with disconnect switches and Type C371 flange-mount variable-depth operating mechanisms for circuit breakers.

General Electric Type STDA flange handles and variable-depth operating mechanisms for disconnect switches and circuit breakers. Also SPECTRAFLEX™ cable operators for circuit breakers.

Siemens ITE MAX FLEX® flange-mount variable-depth operating handles for circuit breakers.

Schneider Square D® Class 9422 disconnect switches with flange-mount variable-depth operating mechanisms or cable mechanisms and Class 9422 flange-mount variable-depth operating mechanisms or cable mechanisms for circuit breakers.

These enclosures will NOT accept Square D Class 9422 bracket-mounted disconnect devices, Class 9422TG1 or TG2 devices.

ORDERING

Order the disconnect switch, operating handle and operating mechanism separately. See Technical Information in the Hoffman Specifier's Guide for wire bend space available when various manufacturers' disconnect switches are installed or Disconnect Ordering Information at hoffmanonline.com for disconnect ordering guidelines and wire bend space available. Check the enclosure dimension drawings to verify the chosen disconnect switch will fit in the enclosure.

All 24.12-in. (613-mm) and deeper enclosures using short connecting rods by the following manufacturers require a Hoffman platform assembly, catalog number ADSCPA, purchased separately.

- ABB Controls flange-operated devices
- Eaton Cutler-Hammer C361 devices
- Eaton Cutler-Hammer C371 mechanisms which use C371E, F, G, K operating mechanism (see Disconnect Enclosure Accessories)
- General Electric Type TDA devices (see Disconnect Enclosure Accessories)
- Schneider Square D® Class 9422 devices (see Disconnect Enclosure Accessories)

The platform assembly can be omitted if long connecting rods are ordered in place of short connecting rods.

- For Eaton Cutler-Hammer operating mechanisms C371E and C371F order catalog number C371CS1 connecting rod. For C371G and C371K order catalog number C371CS2 connecting rod.
- For General Electric devices, order catalog number TDSR extended length drive rod
- For Schneider Square D devices, order catalog number 9422-R2 extra long operating rod(s). Some devices require two rods. Consult factory for space occupied on panel when platform is used.