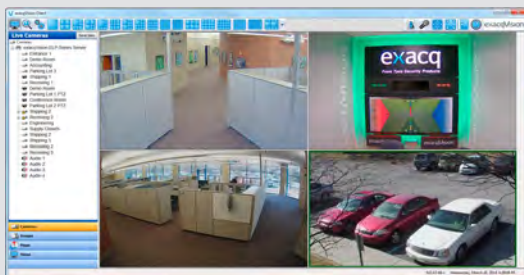


## exacqVision ELP-Series

Hybrid Server  
Complete Network Video Recording Solution

# exacqVision ELP



Pre-Loaded with exacqVision Professional VMS



Powerful search tools for finding video evidence



Free Exacq Mobile app

### • Up to 40 Cameras Per Server

- Continuously record up to 200 Mbps of video, audio and data
- Available with 8 or 16 analog inputs
- Includes 4 IP camera licenses, expandable to 24 per server
- Compatible with over 1,800 IP cameras

### • Unlimited Scalability

- Add unlimited servers for greater capacity or dispersed geographic location
- Easily expand license to record additional high definition IP cameras
- Easily manage multiple NVRs from a single, unified client

### • High Reliability

- Store up to 8 TB storage per server using continuous duty enterprise-class hard drives
- Linux operating system pre-installed on a solid-state drive
- Monitor hardware status with the freely distributed exacqVision client

### • Powerful exacqVision Professional VMS Software

- Monitor video, audio and data in real time
  - Customizable full-screen video wall
  - Two-way audio
  - Interactive camera maps
  - Data integration from retail systems, access control and more
  - Onscreen display of motion, analytics and alarm events with configurable response
- Conduct Investigations on recorded video, audio and data
  - Search across multiple video and archive servers seamlessly
  - Powerful thumbnail and timeline search tools
  - Export video in open-standard video formats or as a self-contained player with tamper protection

### • View Video From Anywhere

- Pre-loaded with exacqVision VMS software for immediate use
- View video and manage servers on multiple
- View live and recorded video on any browser, iOS, Android or Windows Phone 8 mobile device

### • 3-Year Hardware Warranty and Software Subscription Agreement (SSA)

- 3-year hardware warranty and SSA included.
- Update client and server software with the latest exacqVision software features at no additional cost during the 3-year SSA period.

ANALOG	ELP	ELPR
<b>Inputs</b>	8/16	8/16
<b>Compression</b>	H.264, MJPEG	H.264, MJPEG
<b>Frame Rate</b>	240/480 (NTSC), 200/400 (PAL)	240/480 (NTSC), 200/400 (PAL)
<b>Alarm Inputs</b>	4 TTL	4 TTL
<b>Alarm Outputs</b>	2 TTL, 1 Relay	2 TTL, 1 Relay
<b>Analog Outputs</b>	1	1
<b>Audio Inputs</b>	4	4
IP		
<b>Maximum IP Cameras</b>	24	24
<b>Included IP Licenses</b>	4	4
SERVER FEATURES		
<b>Pre-Loaded VMS Software</b>	exacqVision Professional, exacqVision Enterprise (optional)	exacqVision Professional, exacqVision Enterprise (optional)
<b>Typical Video Storage Rate</b>	200 Mbps	200 Mbps
<b>Local Client Display Rate</b>	180 FPS	180 FPS
<b>Maximum Hard Drives</b>	1	2 removable
<b>Maximum Storage</b>	4 TB	8 TB
<b>Monitor Output</b>	1 DVI-I + 1 DVI-I + 1 Display Port, maximum 2 simultaneous monitors	
<b>Operating System</b>	Linux Ubuntu 10.04	
<b>Operating System Drive</b>	32 GB SSD	32 GB SSD
<b>CPU</b>	Intel Celeron	Intel Celeron
<b>RAM</b>	2 GB	2 GB
<b>NIC</b>	2 x 1 Gbps	2 x 1 Gbps
<b>USB Ports</b>	6 x USB 2.0, 2 x USB 3.0	6 x USB 2.0, 2 x USB 3.0
<b>DVD</b>	Included	Optional
<b>Serial</b>	1	1
<b>Audio Outputs</b>	1	1
<b>Audio Inputs</b>	4	4
<b>Keyboard &amp; Mouse</b>	Included	Included
GENERAL FEATURES		
<b>Dimensions (lxwxh)</b>	2.575 x 17 x 18.9 in 6.54 x 43.18 x 48 cm	2.575 x 17 x 18.9 in 6.54 x 43.18 x 48 cm
<b>Weight</b>	22 - 25 lbs. 10 - 11.3 kg	22 - 25 lbs. 10 - 11.3 kg
<b>Regulatory</b>	CE (Class A), FCC (Class A), UL-Listed	
<b>Input Voltage</b>	120/240 VAC auto-sensing	
<b>Power &amp; Heat</b>	130 Watts/460 BTU/h (max) 100 Watts/350 BTU/h (typical)	130 Watts/460 BTU/h (Max) 100 Watts/350 BTU/h (Typical)
<b>Power Supply</b>	Single	Single
<b>Operating Temperature</b>	40° – 95°F (4.5° – 35°C)	
<b>Warranty</b>	3 years, parts & labor plus 3 years SSA included	
<b>Server Revision</b>	A1	A1

## Related Products



exacqVision VMS Software

## Approvals



[www.exacq.com](http://www.exacq.com)