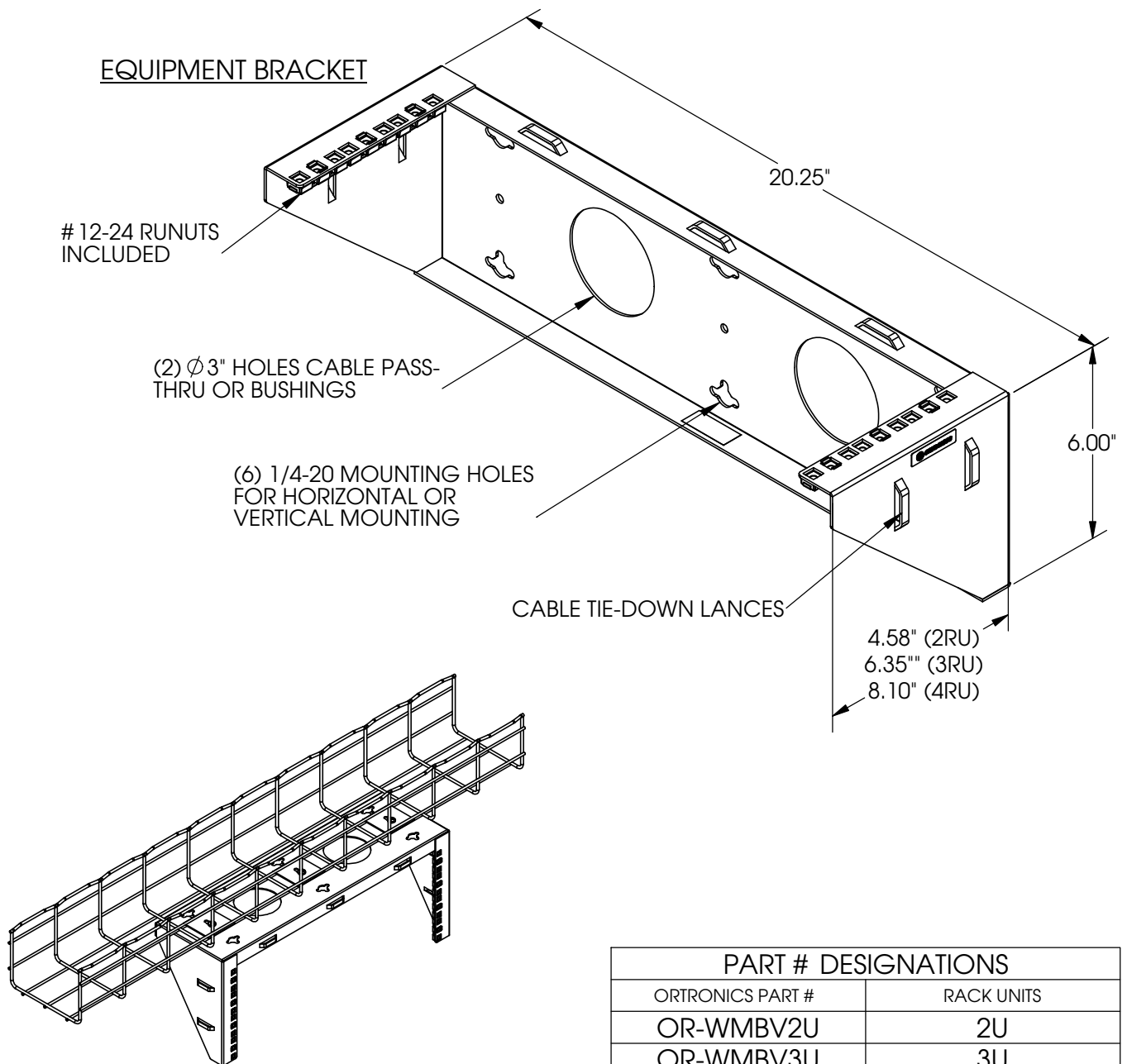


EQUIPMENT BRACKET




OPTION: ABILITY TO MOUNT TO CABLOFIL TRAY
WITH CE 40 BRACKETS. (SOLD SEPARATELY)
(FOR TRAY SUPPORT REFER TO MANUFACTURER'S
RECOMMENDATION)

PART # DESIGNATIONS	
ORTRONICS PART #	RACK UNITS
OR-WMBV2U	2U
OR-WMBV3U	3U
OR-WMBV4U	4U

NOTES:

- LOAD CAPACITY = 200 LBS
- 6" HOOK AND LOOP STRAPS INCLUDED (PACK OF 10)
- MOUNTING HARDWARE TO BE PROVIDED BY INSTALLER

<p>*** NOTICE ***</p> <p>THIS DOCUMENT CONTAINS CONFIDENTIAL AND/OR PROPRIETARY INFORMATION INTENDED FOR USE ONLY BY THE INDIVIDUAL(S) PROVIDED. NEITHER THIS DOCUMENT, NOR ANY INFORMATION CONTAINED HEREIN, MAY BE COPIED, DISTRIBUTED, DISCLOSED TO ANY THIRD PARTY OR USED IN ANY MANNER OTHER THAN FOR WHICH IT HAS BEEN PROVIDED, WITHOUT THE PRIOR WRITTEN CONSENT OF ORTRONICS, INC.</p> <p>MANUFACTURING RELEASE, PRODUCT SPECIFICATIONS AND STANDARDS ARE SUBJECT TO CHANGE WITHOUT NOTICE.</p>			<div><div>ORTRONICS®</div></div> <p>125 EUGENE O'NEILL DRIVE NEW LONDON, CT 06320 TEL: 860-445-3800 FAX: 860-405-2990 WWW.ORTRONICS.COM</p>			
			TITLE BRACKET KIT, VERTICAL EQUIPMENT WALL MOUNT, BLACK			
	NAME	DATE	SIZE	CAD FILE	DWG NO	REV
DWN	C.VACCA	04/04/12	A	WMBVWUC	OR-WMBVWU	00
CHK	C.A.C	05/10/12	SCALE	NONE	WEIGHT	SHEET
APPR	A.M.	05/11/12				1 OF 1