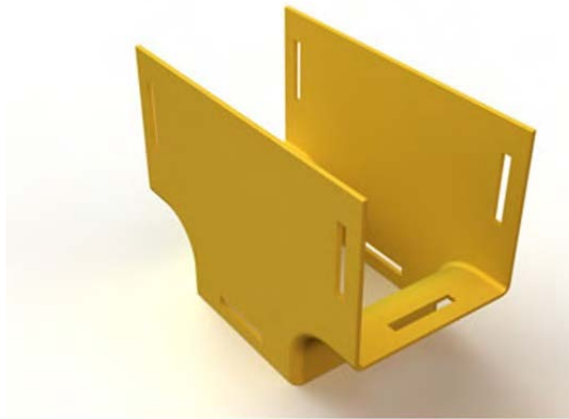


## Mighty Mo Fiber Raceway, Vertical Tee 4" x 4" to 4" x 4", yellow

OR-MMFVT4X4T4-Y



Vertical Tees are used to drop cables vertically from horizontal routes into frames or cabinets. They are available with and without covers. Vertical tees in 8" X 4" and 12" X 4" can be used to transition to smaller duct and retrofit tees can be installed where cables are already in place.

### features & benefits

- Made of Noryl fire retardant plastic:** Certified to UL94VO and Halogen free.
- Snap together slot and joiner system:** Stronger and quicker assembly of raceway and fittings.
- Raceway and fittings available in 5 sizes:** A solution for any size and density of installation.
- Bend radius control in all fittings:** Protects the performance of installed fiber.

### specifications

#### General Info

Product Series: Mighty Mo  
Type: Raceway Fittings

#### Construction Information

Material1: Noryl

#### Dimensions

Height U S: 4"  
Width U S: 4.00"