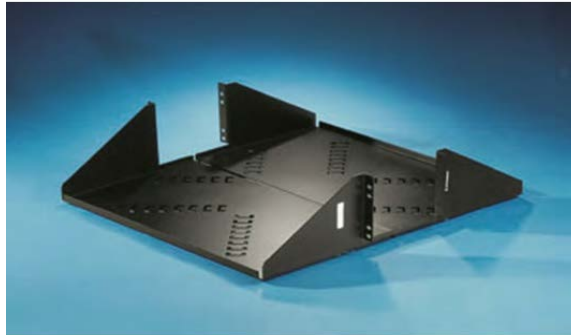


Double Equipment Shelf for Mighty Mo Racks

OR-60400517



Double Equipment Shelf for Mighty Mo Racks, 23 x 5.25" x 24", black, works with 6.5" channel racks

features & benefits



- Holds up to 150 lbs
- Two-piece aluminum design
- Four-point mounting
- Shelf includes cutouts on base
- Flexible
- Usable shelf width is 21.37"

specifications

General Info

Type: Shelves
Features: Vented

Construction Information

Component1: Shelf
Finish Plating1: Painted black
Material1: .080 Aluminum

Dimensions

Capacity Weight U S: 150 lbs
Depth Metric: 610 mm
Height Metric: 133 mm
Height U S: 5.25"
Width Metric: 584 mm

Product Weight U S: 6.51 lbs
Rack Units: 3

Buy American Act Compliance

Country of Origin: UNITED-STATES-OF-AMERICA
Buy American Act Status: Buy American Act Compliant