



**T034KKG**  
**Taper Transition for WR34–WR42, 22.0–26.5 GHz, with interface types PBR260 and PBR220, 3 in, gray**

## Electrical Specifications

Operating Frequency Band	22.0 – 26.5 GHz
VSWR	1.06

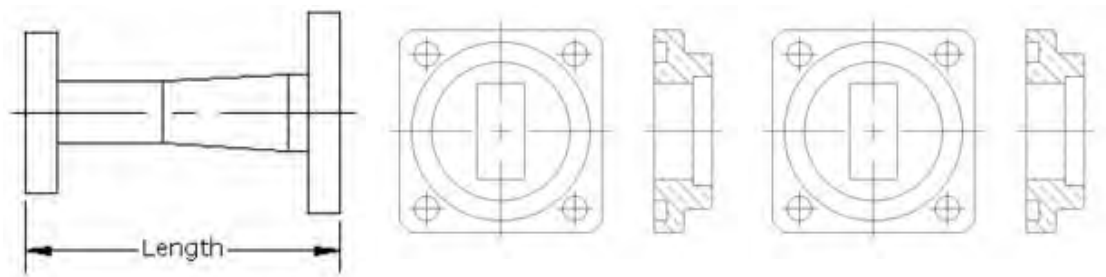
## General Specifications

Component	Taper Transition
Waveguide Size	WR34–WR42   WG21–WG20   R260–220
Finish	Gray
Interface	PBR260
Interface 2	PBR220
Length	76 mm   3 in

### Component

### Interface

### Interface 2



## Regulatory Compliance/Certifications

<b>Agency</b>	<b>Classification</b>
ISO 9001:2008	Designed, manufactured and/or distributed under this quality management system