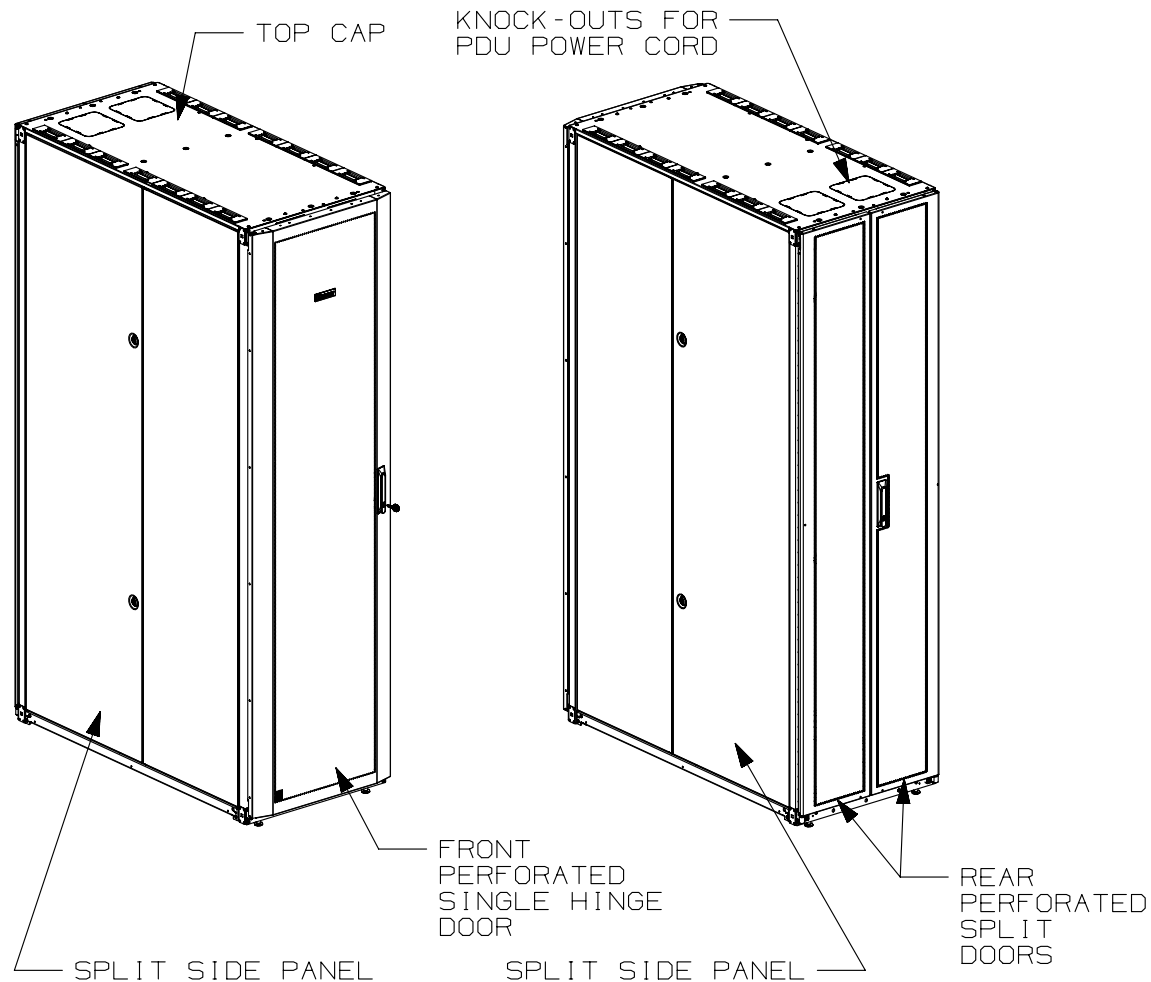


THIS COPY IS PROVIDED ON A RESTRICTED BASIS AND IS NOT TO BE USED IN ANY WAY DETRIMENTAL TO THE INTERESTS OF PANDUIT CORP.



1. VISIT OUR ON-LINE CATALOG AT [WWW.PANDUIT.COM](http://WWW.PANDUIT.COM) FOR A LIST OF CURRENT PARTS APPLICABLE FOR USE WITH THIS PRODUCT.
2. PRIMARY DIMENSIONS ARE IN MILLIMETERS.
3. RAIL ADJUSTMENT MEASUREMENTS ARE TAKEN FROM THE FRONT FACE OF EACH EQUIPMENT RAIL. INDEPENDENT ADJUSTABLE REAR EQUIPMENT MOUNTING RAILS (EIA) ADJUST FROM 65mm [2.6in] TO 435mm [17.1in] AND FROM 583mm [22.9in] TO 919mm [36.2in] WITH PDU BRACKETS AND CABLE MANAGEMENT FINGERS IN PLACE. REMOVING PDU BRACKETS AND OPTIONAL FINGERS INCREASES MAXIMUM E-RAIL SPAN TO 1065mm [41.9in].
4. CAN BE USED WITH ANY 19" EIA STANDARD COMPONENT IN ADDITION TO ALL PANDUIT HORIZONTAL CABLE MANAGEMENT AND PATCH PANEL PRODUCTS.
5. EIA UNIVERSAL STANDARD HOLE PROGRESSION ON EQUIPMENT RAILS  
15.88mm [.625in], 15.88mm [.625in],  
12.70mm [.5in], 15.88mm [.625in],  
15.88mm [.625in], 12.7mm [.5in]...ETC.
6. PARTS SUPPLIED:  
-BASE CABINET  
-FRONT PERFORATED SINGLE HINGE DOOR  
(SEE CHART ON SHEET 2)  
-REAR PERFORATED SPLIT DOOR  
(SEE CHART ON SHEET 2)  
-EQUIPMENT RAILS FRONT & REAR (SEE  
CHART ON SHEET 2)  
-PDU BRACKETS (SEE CHART ON SHEET 2)  
-CASTERS (SEE CHART ON SHEET 2)  
-CABINET HARDWARE KIT  
-INSTRUCTION SHEET
7. RACK UNIT SPACING NUMERALS ARE CLEARLY PRINTED ON EQUIPMENT MOUNTING RAILS.
8. FULLY BONDED STRUCTURE WHEN ASSEMBLED PER INSTRUCTIONS.
9. STATIC LOAD RATING. 1360 Kg (3000 LBS)
10. ROLLING LOAD RATING. 1133 Kg (2500 LBS)
11. SINGLE POINT GROUND LOCATIONS AT TOP AND BOTTOM OF CABINET.
12. ALL CABINET RAILS ARE INSTALLED NUMBERS UP.
13. MAXIMUM EQUIPMENT DEPTH, 1111mm [43.75].

## NET-ACCESS S-TYPE CABINET WITH VERTICAL PATCHING 600mm WIDE X 1200mm DEEP FAMILY

CUSTOMER DRAWING

ITEM REVISION NAME

12V352BF/01

DATASET FILE NAME

12V352BF\_DC/01A

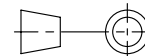
# PANDUIT

MATERIAL:

N/A

DRAWING NUMBER:

12V352BF - DC



THIRD ANGLE  
PROJECTION

DRAWN BY

DATE

CHK

SCALE

PBS

5-15-13

NAGL

NONE

SHT 1 OF 1

SIZE  
A

REV	DATE	BY	CHK	APR	DESCRIPTION	ECN
01A	12-03-14	PBS	ADP	TCN	FLOOR MOUNT DIMENSIONS UPDATED	V09000BX
00A	5-15-13	PBS	NAGL	JDWE	RELEASED TO PRODUCTION	12V352BF-DC

THIS COPY IS PROVIDED ON A RESTRICTED BASIS AND IS NOT TO BE USED IN ANY WAY DETRIMENTAL TO THE INTERESTS OF PANDUIT CORP.


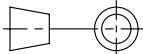
PART NO.	DESCRIPTION	SINGLE HINGE FRONT DOOR	SPLIT REAR DOOR	SPLIT SIDE PANEL	FRONT CAGE NUT E-RAIL	REAR CAGE NUT FINGER MGMT E-RAIL	REAR CAGE NUT VERTICAL PATCH E-RAIL	STANDARD PDU BRACKETS	CASTERS	CABLE MGMT FINGERS	CABINET WEIGHT FULLY UNPACKAGED	CABINET WEIGHT SHIPPING WEIGHT
S6222*P	NET-ACCESS S-TYPE CABINET 600mm X 42RU X 1200mm DEEP	01	01	02	02	00	02	02	04	00	129 Kg/EACH 285 LBS/EACH	150 Kg/EACH 330 LBS/EACH
S6522*P	NET-ACCESS S-TYPE CABINET 600mm X 45RU X 1200mm DEEP	01	01	02	02	00	02	02	04	00	134 Kg/EACH 295 LBS/EACH	154 Kg/EACH 340 LBS/EACH
S6822*P	NET-ACCESS S-TYPE CABINET 600mm X 48RU X 1200mm DEEP	01	01	02	02	00	02	02	04	00	138 Kg/EACH 305 LBS/EACH	159 Kg/EACH 350 LBS/EACH
S6229*P	NET-ACCESS S-TYPE CABINET 600mm X 42RU X 1200mm DEEP	01	01	00	02	00	02	02	04	00	93 Kg/EACH 205 LBS/EACH	113 Kg/EACH 250 LBS/EACH
S6529*P	NET-ACCESS S-TYPE CABINET 600mm X 45RU X 1200mm DEEP	01	01	00	02	00	02	02	04	00	96 Kg/EACH 212 LBS/EACH	116 Kg/EACH 257 LBS/EACH
S6829*P	NET-ACCESS S-TYPE CABINET 600mm X 48RU X 1200mm DEEP	01	01	00	02	00	02	02	04	00	99 Kg/EACH 219 LBS/EACH	120 Kg/EACH 264 LBS/EACH

\* DENOTES COLOR

"B" = BLACK

"W" = WHITE

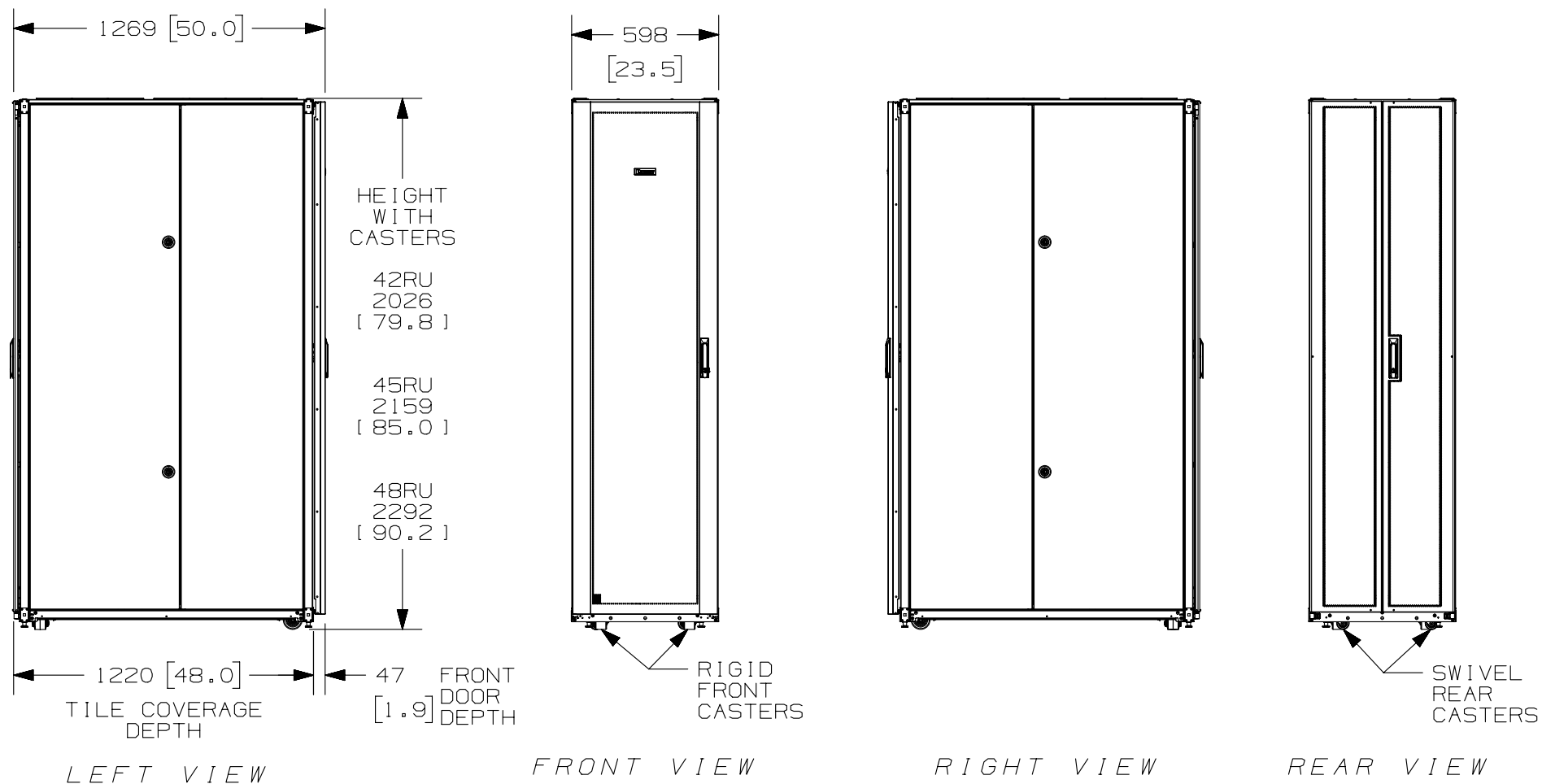
01A	12-03-14	PBS	ADP	TCN	SEE SHEET 1 OF 5 FOR REVISIONS	V09000BX
00A	5-15-13	PBS	NAGL	JDWE	SEE SHEET 1 OF 5 FOR REVISIONS	12V352BF-DC
REV	DATE	BY	CHK	APR	DESCRIPTION	ECN

TITLE						
NET-ACCESS S-TYPE CABINET WITH VERTICAL PATCHING 600mm WIDE X 1200mm DEEP FAMILY						
CUSTOMER DRAWING						
ITEM REVISION NAME 12V352BF/01.PRT						
DATASET FILE NAME 12V352BF_DC/01A.PRT						
 THIRD ANGLE PROJECTION				MATERIAL:  N/A		
				DRAWING NUMBER: 12V352BF - DC		
DRAWN BY PBS	DATE 5-15-13	CHK NAGL	SCALE NONE	SHT 2 OF 5		SIZE A

2

1

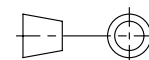
THIS COPY IS PROVIDED ON A RESTRICTED BASIS AND IS NOT TO BE USED IN ANY WAY DETRIMENTAL TO THE INTERESTS OF PANDUIT CORP.



A

A

						TITLE	
						NET-ACCESS S-TYPE CABINET WITH VERTICAL PATCHING 600mm WIDE X 1200mm DEEP FAMILY	
						CUSTOMER DRAWING	
						ITEM REVISION NAME	<b>PANDUIT</b>
						12V352BF/01.PRT	
						DATASET FILE NAME	
						12V352BF_DC/01A.PRT	MATERIAL:
01A	12-03-14	PBS	ADP	TCN	SEE SHEET 1 OF 5 FOR REVISIONS	V09000BX	DRAWING NUMBER: 12V352BF - DC
00A	5-15-13	PBS	NAGL	JDWE	SEE SHEET 1 OF 5 FOR REVISIONS	12V352BF - DC	
REV	DATE	BY	CHK	APR	DESCRIPTION	ECN	

THIRD ANGLE  
PROJECTION

DRAWN BY	DATE	CHK	SCALE	DRAWING NUMBER:		SIZE
PBS	5-15-13	NAGL	NONE	SHT 3 OF 5		A

2

1

(9) LOCATIONS -  
TAPPED FOR M10  
THREADED ROD

- (2) 165mm X 165mm  
[6.5in][6.5in]  
KNOCKOUTS FOR PDU  
POWER CORDS  
COMPATIBLE  
W/COOL BOOT  
P/N: CTGN6X6

RACK UNITS ARE  
NUMBERED AND  
INDEXED FOR  
IDENTIFICATION

(2) FIXED  
FRONT  
EQUIPMENT  
RAILS

- SEE NOTES ON  
SHEET 1 FOR  
REAR EQUIPMENT  
RAIL ADJUSTMENT  
RANGE

(2) REAR EQUIPMENT  
RAILS VERTICAL PATCH  
TYPE  
42RU - 14 CASSETTES  
45RU - 15 CASSETTES  
48RU - 16 CASSETTES

REFAR

(2) PDU  
BRACKETS


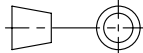
REAR

FRONT

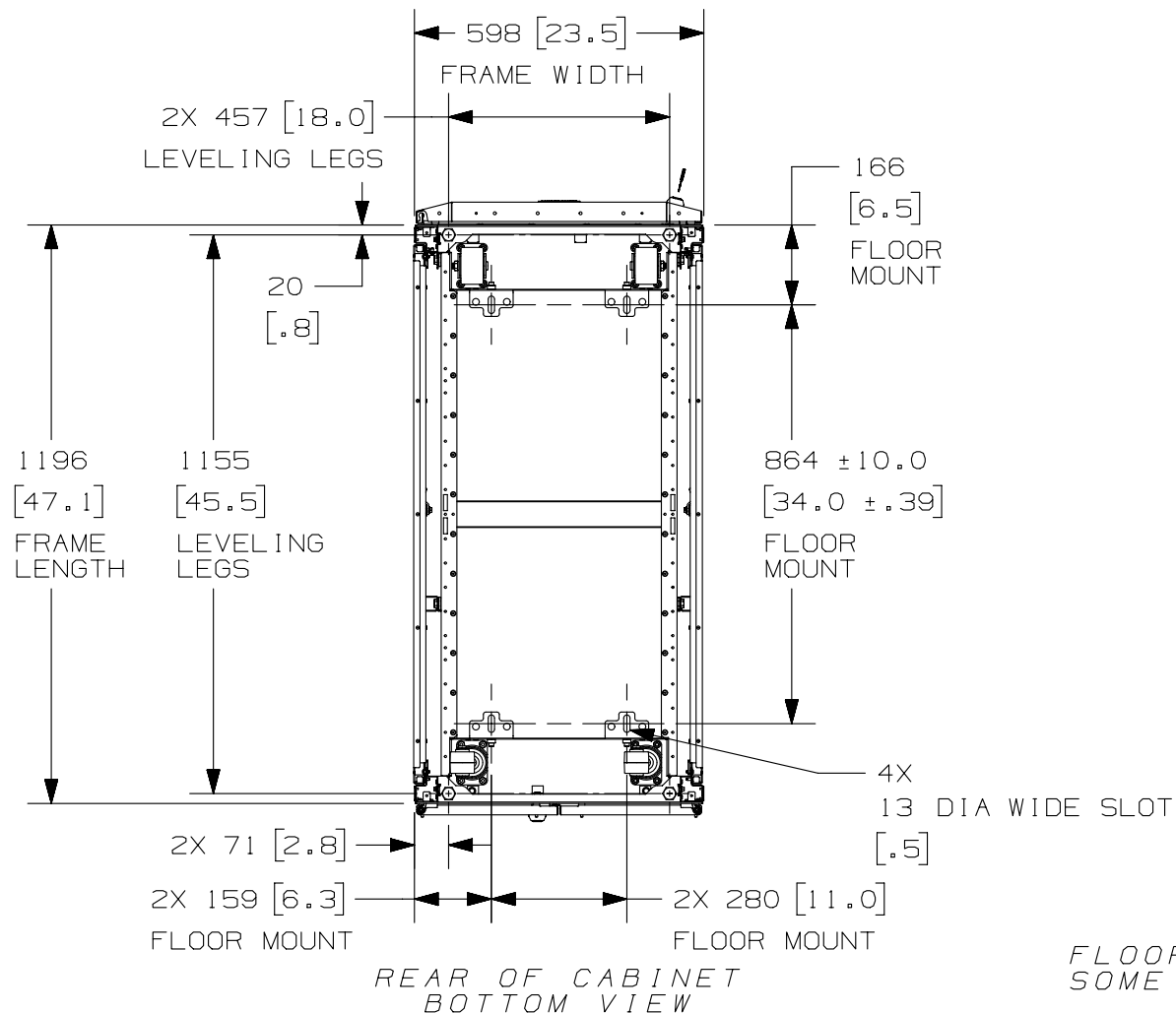
TOP VIEW

- (14) CABLE  
OPENINGS  
(33mm X 120mm)  
[1.3in] [4.7in]  
WITH BEZELS  
AND COVERS  
COMPATIBLE  
W/ COOL BOOT  
P/N: CTGNIX5

FRONT DOOR, REAR DOOR,  
AND SIDE PANELS NOT SHOWN


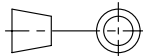
TITLE						NET-ACCESS S-TYPE CABINET WITH VERTICAL PATCHING 600mm WIDE X 1200mm DEEP FAMILY	
ITEM REVISION NAME						CUSTOMER DRAWING	
12V352BF/01.PRT							
DATASET FILE NAME							
12V352BF_DC/01A.PRT							
  THIRD ANGLE PROJECTION						MATERIAL:	
						N/A	
						DRAWING NUMBER:	
12V352BF - DC							
DRAWN BY	DATE	CHK	SCALE	SIZE			
PBS	5-15-13	NAGL	NONE	SHT 4 OF 5			
				A			

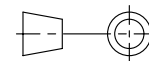
THIS COPY IS PROVIDED ON A RESTRICTED BASIS AND IS NOT TO BE USED IN ANY WAY DETRIMENTAL TO THE INTERESTS OF PANDUIT CORP.



FLOOR MOUNTING HOLE LOCATIONS -  
SOME PARTS REMOVED FOR CLARITY

01A	12-03-14	PBS	ADP	TCN	SEE SHEET 1 OF 5 FOR REVISIONS	V09000BX
00A	5-15-13	PBS	NAGL	JDWE	SEE SHEET 1 OF 5 FOR REVISIONS	12V352BF-DC
REV	DATE	BY	CHK	APR	DESCRIPTION	ECN

TITLE				NET-ACCESS S-TYPE CABINET WITH VERTICAL PATCHING 600mm WIDE X 1200mm DEEP FAMILY	
				CUSTOMER DRAWING	
ITEM REVISION NAME		12V352BF/01.PRT			
DATASET FILE NAME		12V352BF_DC/01A.PRT			
		THIRD ANGLE PROJECTION		MATERIAL :	
				N/A	
				DRAWING NUMBER:	
				12V352BF - DC	
DRAWN BY	DATE	CHK	SCALE	SIZE	
PBS	5-15-13	NAGL	NONE	A	
				SHT 5 OF 5	
				A	



THIRD ANGLE  
PROJECTION