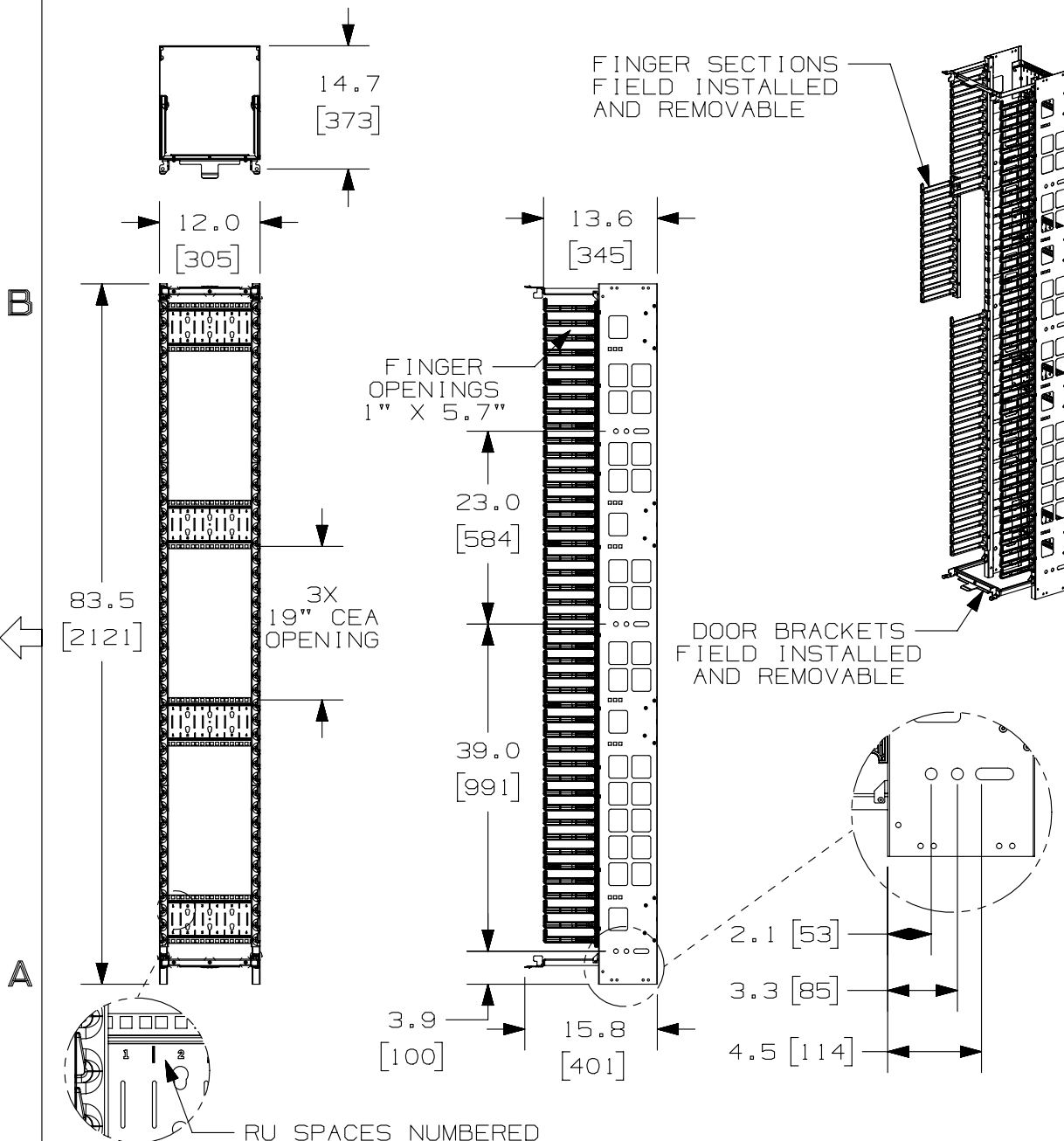


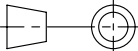
THIS COPY IS PROVIDED ON A RESTRICTED BASIS AND IS NOT TO BE USED IN ANY WAY DETRIMENTAL TO THE INTERESTS OF PANDUIT CORP.



PANDUIT P/N	WEIGHT
PEVF12	37.2 LBS/EACH (16.9 kg/EACH)

NOTES:

- VISIT OUR ON-LINE CATALOG AT WWW.PANDUIT.COM FOR A CURRENT LIST OF PRODUCTS APPLICABLE FOR USE WITH THIS PART.
- COMPONENTS: (1) 12" SINGLE-SIDE VERTICAL MANAGER
(1) HARDWARE KIT
(1) FINGER KIT
(2) DOOR BRACKETS
(2) DOOR BRACKET BASES
- CAN BE USED WITH ANY 19 OR 23 INCH EIA STANDARD RACK.
- 3 ROWS OF 6RU 19" CEA OPENINGS (18 TOTAL RU'S, 6 RU'S WITH LIMITED DEPTH).
- 12" DOOR SOLD SEPARATELY (P/N: PED12).
- DIMENSIONS IN PARENTHESIS ARE METRIC.
- ALL DIMENSIONS ARE REFERENCE ONLY.

TITLE PATCHRUNNER HIGH CAPACITY VERTICAL MANAGER 12" WIDE, SINGLE-SIDED (PEVF12) CONTROL DRAWING			
ITEM REVISION NAME 09V054AH/08		PANDUIT	
DATASET FILE NAME 09V054AH_DC/08A			
UNLESS OTHERWISE SPECIFIED, DIMENSIONAL TOLERANCES ARE: IN [mm]		MATERIAL: BACKBONE- STEEL FINGERS- ABS	
		DRAWING NUMBER: 09V054AH-DC	
DRAWN BY BAME	DATE 2/3/10	CHK NAGL	SCALE NONE
		SHT 1 OF 1	
		SIZE A	

08A	1/17/14	FGR	BAME	CMK	DRAWING UPDATED	09V054AH-DC
07A	5/22/13	FGR	BAME	CMK	PREVIOUS REVISIONS OMITTED DOOR BRACKETS REVISED	09V054AH-DC
REV	DATE	BY	CHK	APR	DESCRIPTION	ECN