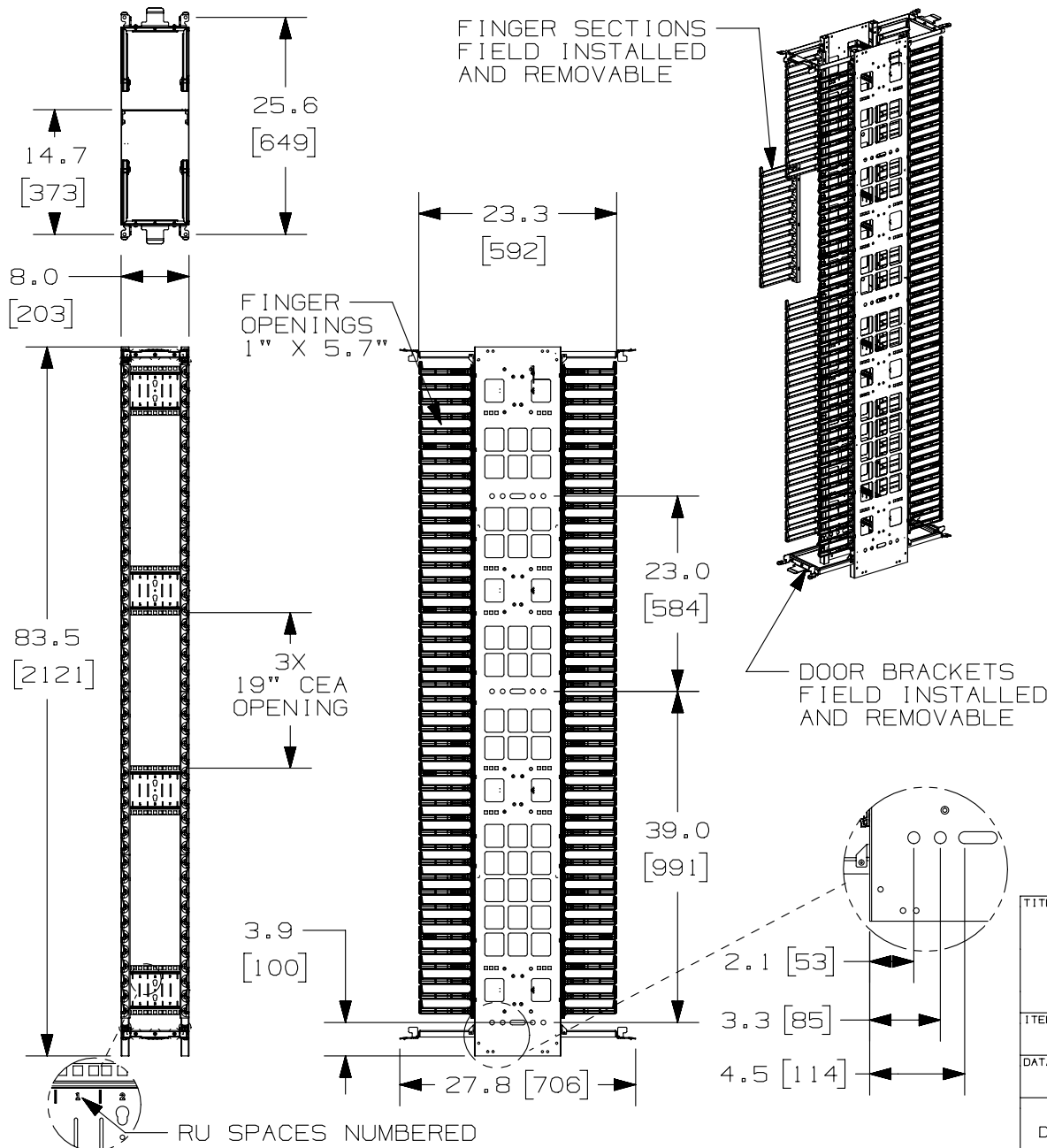



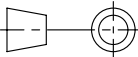
THIS COPY IS PROVIDED ON A RESTRICTED BASIS AND IS NOT TO BE USED IN ANY WAY DETRIMENTAL TO THE INTERESTS OF PANDUIT CORP.



| PANDUIT P/N | WEIGHT                          |
|-------------|---------------------------------|
| PEV8        | 52.3 LBS/EACH<br>(23.8 kg/EACH) |

#### NOTES:

- VISIT OUR ON-LINE CATALOG AT [WWW.PANDUIT.COM](http://WWW.PANDUIT.COM) FOR A CURRENT LIST OF PRODUCTS APPLICABLE FOR USE WITH THIS PART.
- COMPONENTS: (1) 8" DUAL-SIDE VERTICAL MANAGER  
(1) HARDWARE KIT  
(2) FINGER KITS  
(4) DOOR BRACKETS  
(4) DOOR BRACKET BASES
- CAN BE USED WITH ANY 19 OR 23 INCH EIA STANDARD RACK.
- 3 ROWS OF 3RU 19" CEA OPENINGS (9 TOTAL RU)
- 8" DOOR SOLD SEPARATELY (P/N: PED8)
- DIMENSIONS IN PARENTHESIS ARE METRIC.
- ALL DIMENSIONS ARE REFERENCE ONLY.

|  |                |             |   |           |
|--|----------------|-------------|---|-----------|
| TITLE<br>PATCHRUNNER HIGH CAPACITY VERTICAL<br>MANAGER 8" WIDE, DUAL-SIDED (PEV8)<br>CONTROL DRAWING |                |             |   |           |
| ITEM REVISION NAME<br>09V054AC/07  |                |             |  |           |
| DATASET FILE NAME<br>09V054AC_DC/07A   |                |             |   |           |
| UNLESS OTHERWISE SPECIFIED,<br>DIMENSIONAL TOLERANCES ARE: IN ( mm )                                 |                |             | MATERIAL:<br><br>BACKBONE- STEEL<br>FINGERS- ABS                                      |           |
|                 |                |             | DRAWING NUMBER:<br>09V054AC - DC  |           |
| DRAWN BY<br>BAME   | DATE<br>2/3/10 | CHK<br>NAGL | SCALE<br>NONE   | SIZE<br>A |
| SHT 1 OF 1   |                |             |   |           |

| 07A | 5/20/13 | FGR | BAME | CMK | PREVIOUS REVISION REMO<br>DOOR BRACKET GUSSETS REVISED | 09V054AC-DC |
|-----|---------|-----|------|-----|--|-------------|
| REV | DATE    | BY  | CHK  | APR | DESCRIPTION  | ECN         |