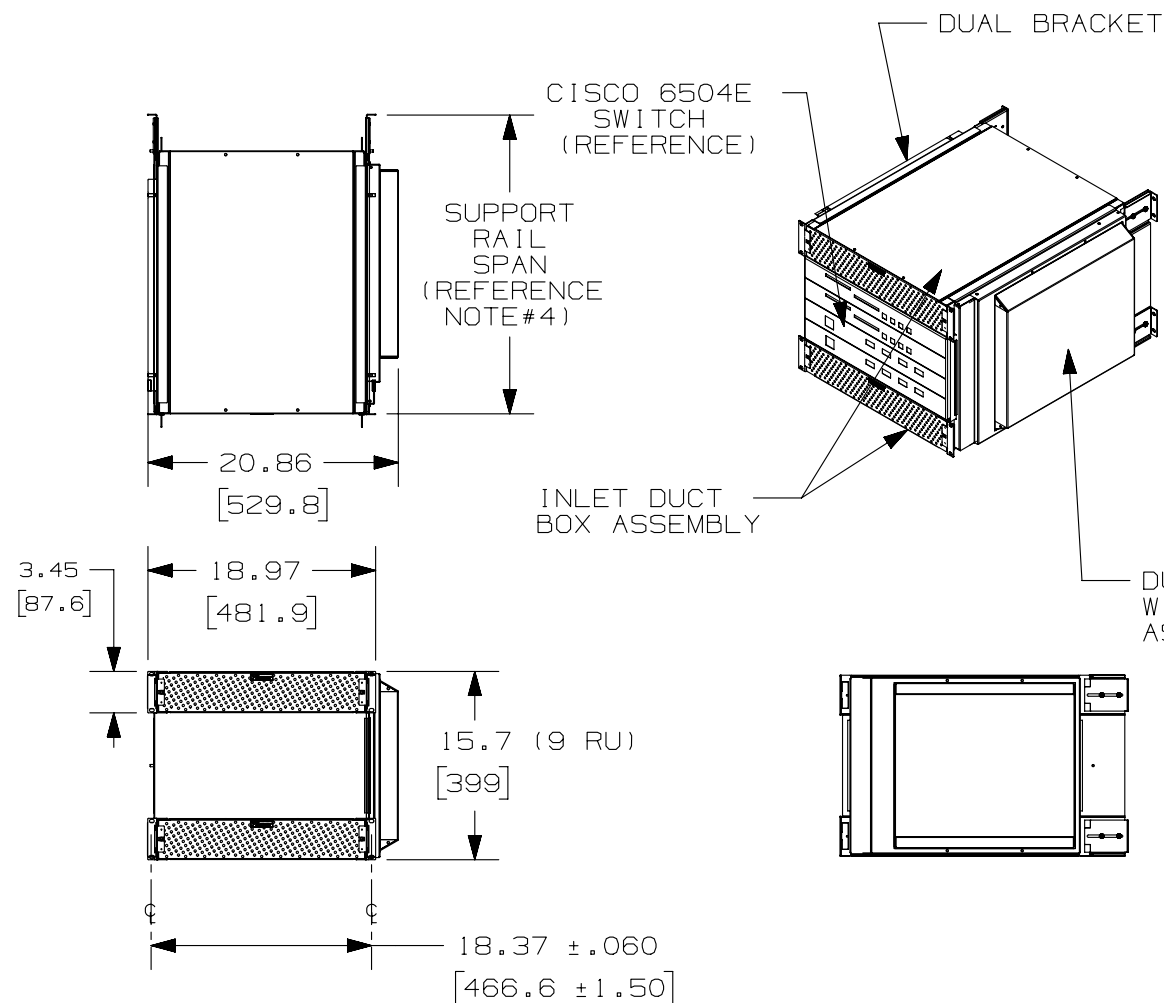


THIS COPY IS PROVIDED ON A RESTRICTED BASIS AND IS NOT TO BE USED IN ANY WAY DETRIMENTAL TO THE INTERESTS OF PANDUIT CORP.



PANDUIT PART NO.	WEIGHT
CNLTD52A2	44.19 LBS/EACH 20.04 kg/EACH

NOTES:

- VISIT OUR CATALOG ON-LINE AT WWW.PANDUIT.COM FOR A LIST OF CURRENT PARTS APPLICABLE FOR USE WITH THIS PRODUCT.
- PARTS SUPPLIED:
 - 1 - DUAL BRACKET
 - 1 - DUAL BRACKET W/DUCTING ASSEMBLY
 - 1 - MOUNTING HARDWARE KIT
 - 2 - INLET DUCT BOX ASSEMBLIES
- DIMENSIONS IN PARENTHESES ARE METRIC (mm).
- SUPPORT RAILS ADJUST FROM 24.25" TO 26.0" [615-660].

DUAL BRACKET WITH DUCTING ASSEMBLY

63% OPEN PERFORATION PATTERN

TITLE				
INLET DUCT FOR CISCO 6504E (CNLTD52A2)				
CUSTOMER DRAWING				
ITEM REVISION NAME			PANDUIT	
09V126ZC/00				
DATASET FILE NAME			MATERIAL:	
09V126ZC_DC/00B				
			N/A	
			DRAWING NUMBER:	
			09V126ZC	
DRAWN BY	DATE	CHK	SCALE	
ERK	08/11/11		N/A	
			SHT 1 OF 4	A

2

1

NET-ACCESS
SWITCH CABINET
(N*** or CN***)

EXHAUST OF
CISCO 6504E
SWITCH
(REFERENCE)

SUPPORT RAILS
ADJUST FROM 24.5"
TO 26.0" DEPTH

CISCO 6504E
SWITCH
(REFERENCE,
(PORT SIDE OF
SWITCH FACES
COLD AISLE)

VERTICAL
BLANKING
PANEL

2RU INLET
DUCTING WITH
INTEGRATED
PERFORATION

SIDE DUCT

*FRONT OF CABINET
(FACES COLD AISLE)*

*REAR OF CABINET
(FACES HOT AISLE)*

1. VERTICAL BLANKING PANELS MUST BE USED WITH THIS PRODUCT
TO PREVENT EXHAUST RECIRCULATION.

TITLE						INLET DUCT FOR CISCO 6504E (CNLTD52A2)			
CUSTOMER DRAWING									
ITEM REVISION NAME						09V126ZC/00			
DATASET FILE NAME						09V126ZC_DC/00B			
MATERIAL:						N/A			
DRAWING NUMBER:						09V126ZC			
DRAWN BY		DATE		CHK		SCALE		SHT 2 OF 4	
ERK		08/11/11				N/A		A	

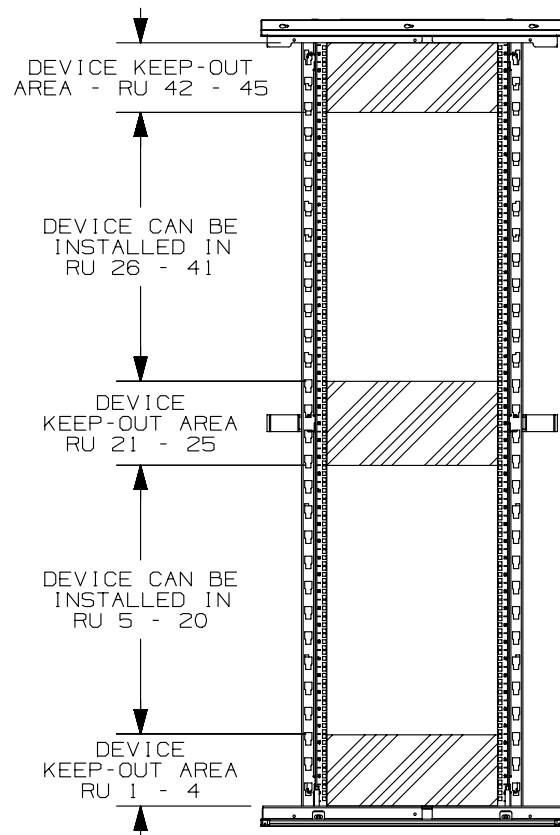
2

1

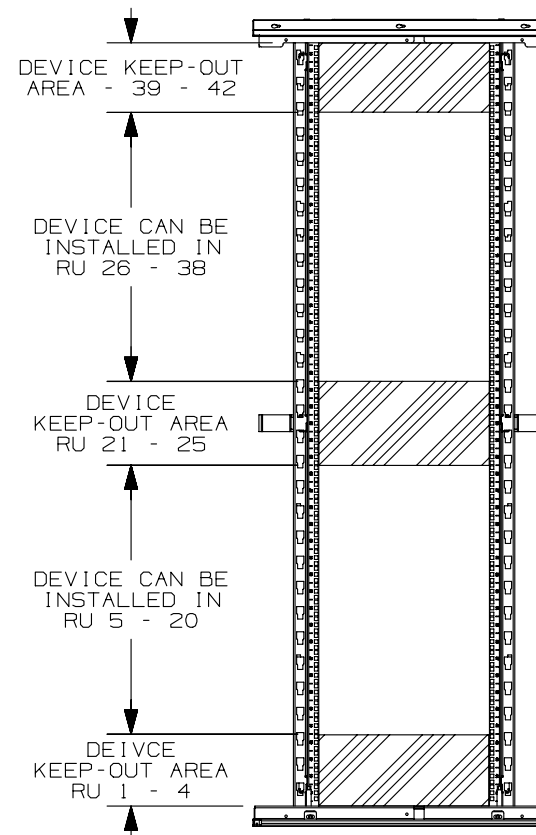
00B	03/05/13	PJST			RELEASED TO PRODUCTION	09V126ZC
REV	DATE	BY	CHK	APR	DESCRIPTION	ECN

DUE TO PHYSICAL CONSTRAINTS POSED BY FRONT-TO-BACK FRAME BEAMS ON THE LEGACY NET-ACCESS CABINET, THERE ARE CERTAIN AREAS OF THE CABINET THAT THE DEVICE CANNOT BE MOUNTED WHEN USED IN CONJUNCTION WITH THIS INLET DUCT.

45 RU NET-ACCESS
CN*** CABINET (LEGACY)



42 RU NET-ACCESS
CN*** CABINET (LEGACY)



FOR NEW NET-ACCESS SWITCH CABINETS (N***), THERE ARE NO DEVICE KEEP-OUT AREAS. THE ONLY RESTRICTION ON DEVICE PLACEMENT IS THAT 2 RU MUST BE LEFT OPEN ABOVE AND BELOW THE SWITCH.

NOTE: NUMBERS-UP RU NUMBERING (#1 AT BOTTOM) ASSUMED

TITLE					INLET DUCT FOR CISCO 6504E (CNLTD52A2)				
ITEM REVISION NAME					CUSTOMER DRAWING				
09V126ZC/00					PANDUIT				
DATASET FILE NAME									
09V126ZC_DC/00B					MATERIAL:				
					N/A				
					DRAWING NUMBER:				
					09V126ZC				
DRAWN BY	DATE	CHK	SCALE	SHT 3 OF 4		SIZE			
ERK	08/11/11		N/A			A			

00B	03/05/13	PJST			RELEASED TO PRODUCTION	09V126ZC
REV	DATE	BY	CHK	APR	DESCRIPTION	ECN