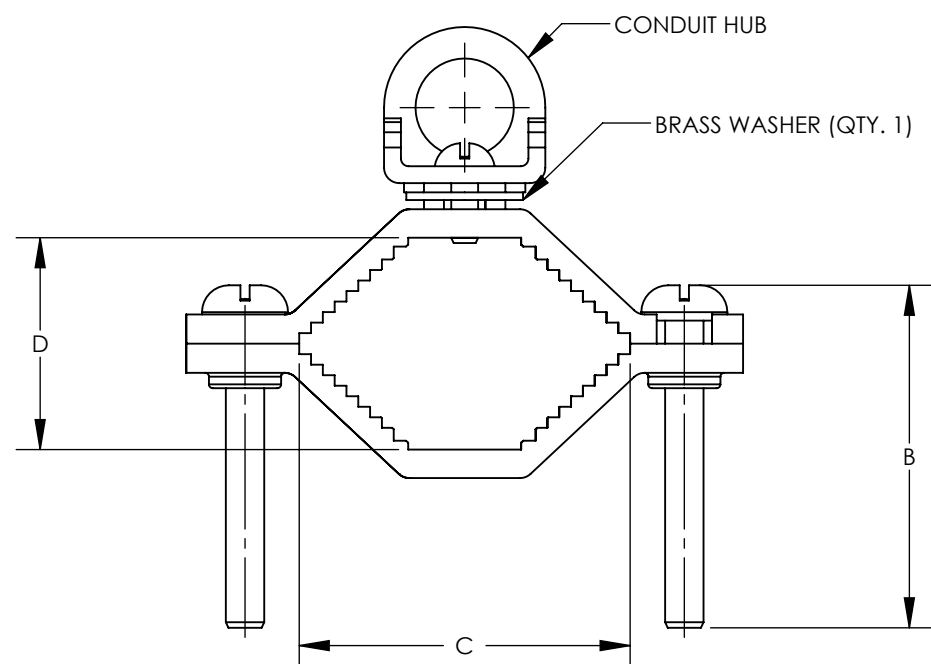
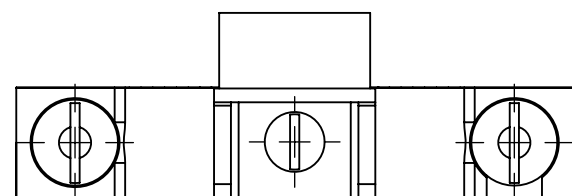


NOTES:

- MATERIAL:
BODY - BRONZE (GUN METAL)
SCREW - STEEL, ZINC PLATED
- PARTS ARE cULus LISTED TO UL467 AS
GROUNDING & BONDING EQUIPMENT.
- SEE WWW.PANDUIT.COM FOR PART NUMBER
SUFFIX DESIGNATION FOR PACKAGE SIZE.

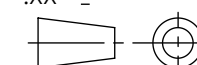


PART NUMBER	CONDUIT HUB SIZE	DIMENSIONS IN [mm] ±.05 [1.3]			DESCRIPTION	WATER PIPE	GROUNDING WIRE
		B	C	D			
GPC4-1-12	1/2"	1.65 [41.9]	1.00 [25.4]	0.56 [14.2]	GROUND CLAMP FOR RIGID CONDUIT WITH 1/2 HUB	1/2" - 1"	8 - 4 STR
GPC4-1-34	3/4"	1.65 [41.9]	1.00 [25.4]	0.56 [14.2]	GROUND CLAMP FOR RIGID CONDUIT WITH STEEL SCREWS 3/4 HUB	1/2" - 1"	8 - 4 STR
GPC4-1-1	1"	1.65 [41.9]	1.00 [25.4]	0.56 [14.2]	GROUND CLAMP FOR RIGID CONDUIT WITH STEEL SCREWS 1 HUB	1/2" - 1"	8 - 4 STR
GPC4-2-12	1/2"	2.22 [56.4]	2.08 [52.8]	1.33 [33.8]	GROUND CLAMP FOR RIGID CONDUIT WITH 1/2 HUB	1-1/4" - 2"	8 - 4 STR
GPC4-2-34	3/4"	2.22 [56.4]	2.08 [52.8]	1.33 [33.8]	GROUND CLAMP FOR RIGID CONDUIT WITH STEEL SCREWS 3/4 HUB	1-1/4" - 2"	8 - 4 STR
GPC4-2-1	1"	2.22 [56.4]	2.08 [52.8]	1.33 [33.8]	GROUND CLAMP FOR RIGID CONDUIT WITH STEEL SCREWS 1 HUB	1-1/4" - 2"	8 - 4 STR
GPC4-4-12	1/2"	4.25 [108.0]	3.81 [96.8]	2.75 [69.9]	GROUND CLAMP FOR RIGID CONDUIT WITH 1/2 HUB	2-1/2" - 4"	8 - 4 STR
GPC4-4-34	3/4"	4.25 [108.0]	3.81 [96.8]	2.75 [69.9]	GROUND CLAMP FOR RIGID CONDUIT WITH 3/4 HUB	2-1/2" - 4"	8 - 4 STR
GPC4-4-1	1"	4.25 [108.0]	3.81 [96.8]	2.75 [69.9]	GROUND CLAMP FOR RIGID CONDUIT WITH 1 HUB	2-1/2" - 4"	8 - 4 STR
GPC4-6-12	1/2"	5.20 [132.1]	6.00 [152.4]	2.90 [73.7]	GROUND CLAMP FOR RIGID CONDUIT WITH 1/2 HUB	4-1/2" - 6"	8 - 4 STR
GPC4-6-34	3/4"	5.20 [132.1]	6.00 [152.4]	2.90 [73.7]	GROUND CLAMP FOR RIGID CONDUIT WITH 1/2 HUB	4-1/2" - 6"	8 - 4 STR
GPC4-6-1	1"	5.20 [132.1]	6.00 [152.4]	2.90 [73.7]	GROUND CLAMP FOR RIGID CONDUIT WITH STEEL SCREWS 1 HUB	4-1/2" - 6"	8 - 4 STR

							TITLE BRONZE GROUND PIPE CLAMP CUSTOMER DRAWING						
							ITEM REVISION NAME	10J018AK/01					
							DATASET FILE NAME	10J018AK-JC/01.SLDDRW					
01	8/12	JHNU	SRBI	RGB	REVISED P/N'S: GPC4-1-12 WAS GPC6-1-12, GPC4-1-34 WAS GPC6-1-34, GPC4-1-1 WAS GPC6-1-1, GPC4-2-12 WAS GPC6-2-12, GPC4-2-34 WAS GPC6-2-34, GPC4-2-1 WAS GPC6-2-1, GPC4-4-12 WAS GPC6-4-12, GPC4-4-34 WAS GPC6-4-34, GPC4-4-1 WAS GPC 6-4-1, GPC4-6-12 WAS GPC6-6-12, GPC4-6-34 WAS GPC6-6-34, GPC4-6-1 WAS GPC6-6-1		10J018AK-JC	UNLESS OTHERWISE SPECIFIED, DIMENSIONAL TOLERANCES ARE: IN [mm] .X ± .XXX ± .XX ± ANGLES ±					
00	7/12	JHNU	SRBI	RGB	DRAWING RELEASED		10J018AK-JC	THIRD ANGLE PROJECTION					
REV	DATE	BY	CHK	APR	DESCRIPTION	ECN	DRAWN BY	DATE	CHK	SCALE	DRAWING NUMBER	SHEET 1 OF 1	SIZE
							JHNU	7/12	SRBI	N/A	10J018AK-JC		B



SEE NOTES



THIRD ANGLE PROJECTION