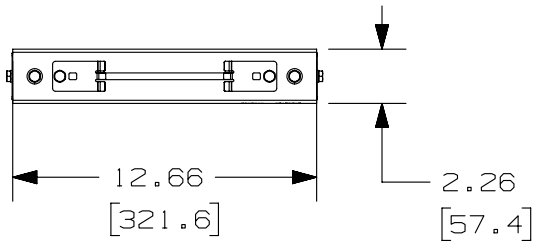
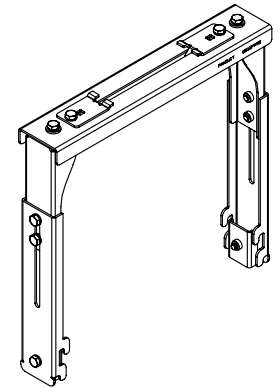
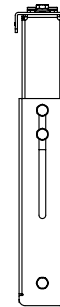
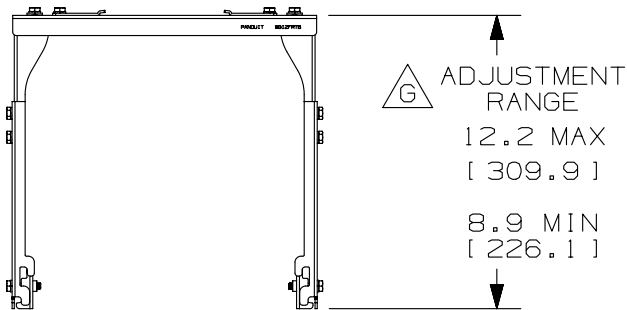


THIS COPY IS PROVIDED ON A RESTRICTED BASIS AND IS NOT TO BE USED IN ANY WAY DETRIMENTAL TO THE INTERESTS OF PANDUIT CORP.

PANDUIT PART NUMBER	WEIGHT
WG12FRTB**	3.79 LBS/EACH (1719.1 g/EACH)



- NOTES:**
- F. 1. PANDUIT PART NUMBER WG12FRTB** INCLUDES:
 - A. ONE (1) WYR-GRID 12" WIDTH FIBERRUNNER TRAPEZE BRACKET ASSEMBLY FOR 4X4 AND 6X4
 - B. TWO (2) WYR-GRID FIBERRUNNER TRAPEZE UPRIGHT SUPPORT BRACKET ASSEMBLIES
 - C. TWO (2) 1/4-20 X 3/4 HEX HEAD CAP SCREWS
 - D. FOUR (4) 1/4 -20 HELICAL SPRING LOCKWASHERS
 - E. TWO (2) 1/4-20 SAE FLAT WASHER
 - F. TWO (2) WYR-GRID INTEGRAL BRACKET LOWER CLIP ASSEMBLIES
 - G. TWO (2) 1/4-20 X 1-1/8 HEX HEAD CAP SCREWS
 - G. 2. DIMENSIONS IN PARENTHESES ARE METRIC.
 - H. 3. PROVIDES ABILITY TO MOUNT FIBERRUNNER 6.6" TO 9.9" ABOVE WYR-GRID.
 - 4. SEE CATALOG FOR ADDITIONAL PART SUFFIXES TO INDICATE PART FINISH AND/OR PACKAGE QUANTITY.



REV	DATE	BY	CHK	APR	DESCRIPTION	ECN
4	09-06-13	SSP	KMC	RN	H. REVISED INTEFRAL TO INTEGRAL ON NOTE 1.F	10D166AF-DC
3	03-26-13	SSP	DWR	RN	RELEASED TO PRODUCTION G. REVISED THE ADJUSTEMENT RANGE TOLERANCES F. ADDED NOTE #4 TO GENERAL NOTES E. REMOVED PRIOR NOTES	10D166AF-DC

TITLE WYR-GRID 12" WIDTH FIBERRUNNER TRAPEZE BRACKET FOR 4X4 AND 6X4 (WG12FRTB**) CUSTOMER DRAWING					
ITEM REVISION NAME 10D166AF/03.PRT			PANDUIT TM		
DATASET FILE NAME 10D166AF_DC/03E WG12FRTB.PRT					
UNLESS OTHERWISE SPECIFIED, DIMENSIONAL TOLERANCES ARE: IN (mm)			MATERIAL: STEEL		
.X ± .05 [1.3] .XXX ± .XX ± .05 [1.3] ANGLES ±			DRAWING NUMBER: 10D166AF-DC		
DRAWN BY ERK		DATE 06-24-11	CHK DWR	SCALE NONE	SHT 1 OF 1
					SIZE A

D10100DA/11

2

1

2

1