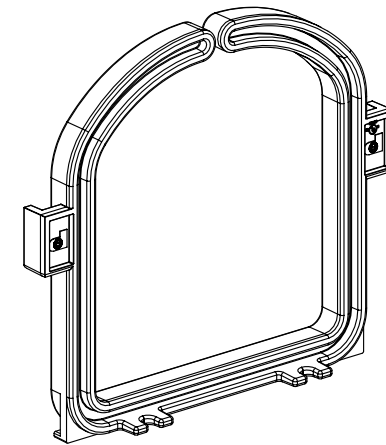
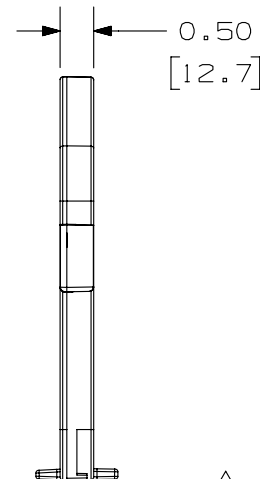
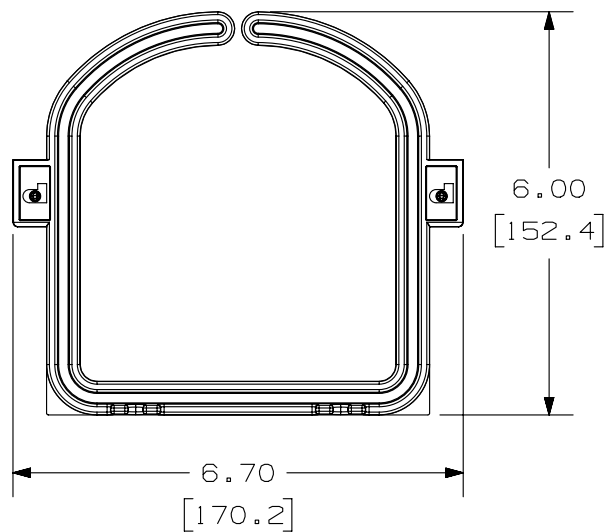
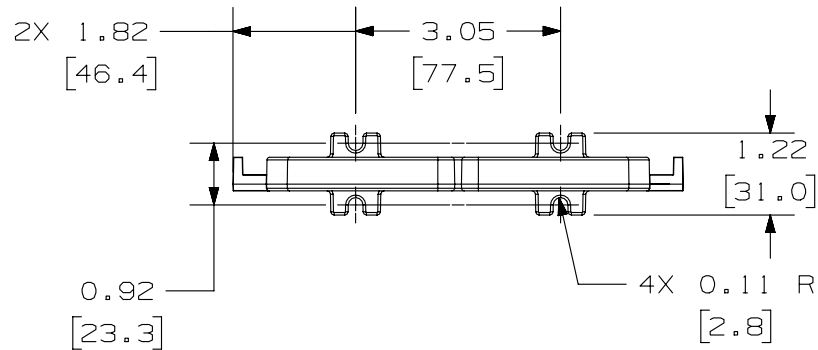


THIS COPY IS PROVIDED ON A RESTRICTED BASIS AND IS NOT TO BE USED IN ANY WAY DETRIMENTAL TO THE INTERESTS OF PANDUIT CORP.

| PANDUIT P/N | WEIGHT |
|-------------|----------------------------------|
| PXDR | 1.67 LB/10 PCS (760 g/10 PCS) |

NOTES:

1. SEE CURRENT CATALOG FOR ADDITIONAL PART NUMBER SUFFIXES TO INDICATE PACKAGE QUANTITY.
2. SEE CATALOG FOR COMPLETE LIST OF PARTS APPLICABLE FOR USE WITH THIS PART.
3. DIMENSIONS IN PARENTHESES ARE IN METRIC.



| | | | |
|--|---------|--|-------|
| PART NUMBER | | PXDR | |
| TITLE | | | |
| CROSS CONNECT D-RING | | | |
| CUSTOMER DRAWING | | | |
| ITEM REVISION NAME | | M02897BG/04 | |
| DATASET FILE NAME | | M02897BG_DC19/04C | |
| UNLESS OTHERWISE SPECIFIED, DIMENSIONAL TOLERANCES ARE: IN [mm] | | PANDUIT MATERIAL: POLYCARBONATE | |
| .x ± .xxx ± .010 [.3] .xx ± .03 [.8] ANGLES ± | | | |
| THIRD ANGLE PROJECTION | | DRAWING NUMBER: | |
| 02897 - 19 | | 02897 - 19 | |
| DRAWN BY | DATE | CHK | SCALE |
| MDJR | 6-27-08 | PBD | .35-1 |
| SHT 1 OF 1 | | | SIZE |
| | | | A |

| 2 | 6-25-14 | MDJR | REFR | LPH | A. UPDATED TITLE BLOCK AND REMOVED NOTE 4. REMOVED PREVIOUS REVISIONS FOR CLARITY. | 02897-19 |
|-----|---------|------|------|-----|---|----------|
| REV | DATE | BY | CHK | APR | DESCRIPTION | ECN |