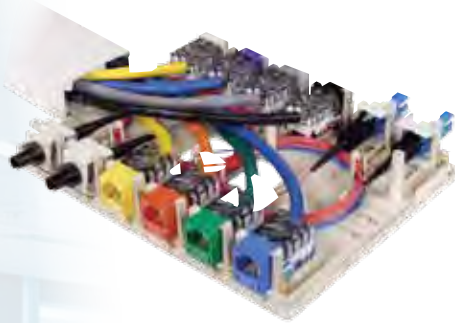




Compatible with Hubbell Labeling System, see page U7.

**HUBBELL**  
**Advantage**

- Furniture and Surface Mounting
- Accepts Standard HXJ5 Jacks, Fiber and AV Connections
- ADA Compliant



**Specifications**



- Fiber storage in 4-, 6- and 12-port versions
- 4- and 6-port versions have ratcheting tabs for adjustable furniture mounting
- 1-, 2-, 4-, 6- and 12-port configurations

**POLYTRAK® Raceway Compatibility Chart**

Series	PT2	PP	PL	PW	PB	PS
ISB1		▲			▲*	
ISB2		▲			▲*	
ISB4		▲	▲	▲	▲*	
ISB6		▲	▲	▲	▲*	
ISB12		▲	▲	▲	▲*	

\*Use PB3REDA transition fitting.

**ISB Surface Mount Boxes**

Size	Catalog No.
12-Port	<b>ISB12xx</b>
6-Port	<b>ISB6xx</b>
4-Port	<b>ISB4xx</b>
2-Port	<b>ISB2xx</b>
1-Port	<b>ISB1xx</b>

**xx** = Color: **AL** (Almond), **BK** (Black), **EI** (Electric Ivory), **GY** (Gray), **LA** (Light Almond), **OW** (Office White), and **W** (White). See color chart on page V30.

Note: SJ shielded jacks are not compatible with ISB surface mount boxes.



ISB12OW  
(Loaded)



ISB6OW  
(Loaded)



ISB4OW  
(Loaded)



ISB2OW  
(Loaded)



ISB1OW  
(Loaded)