



stand-alone network interface device

SFBRM1040-140

Redundant OAM/IP-Based Remotely Managed NID (Network Interface Device)



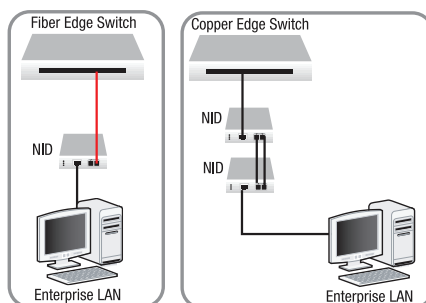
Features

- ▶ MEF 9 & MEF 14 Carrier Ethernet Certification
- ▶ Two remote management modes:
 - IP-Based Remote Management
 - In-Band Link OAM 802.3ah (remote device managed by local peer)
- ▶ SNMP v1
- ▶ AutoCross™ [
- ▶ Auto-Negotiation
- ▶ Pause
- ▶ Transparent Link Pass Through
- ▶ Far-End-Fault
- ▶ Remote Loopback
- ▶ IEEE 802.1p QoS packet classification with 4 egress queues
- ▶ IPv4 IP TOS and DiffServ QoS classification, IPv6 Traffic class
- ▶ IEEE 802.1q VLAN
- ▶ Static MAC, 64 entries
- ▶ Double VLAN tagging (C-tag/S-tag)(Q-in-Q)
- ▶ RADIUS client
- ▶ RMON counters for each port
- ▶ Bandwidth Allocation per port
- ▶ DMI Optical Management
- ▶ USB port for basic setup
- ▶ Cable diagnostic function for TP ports
- ▶ 8K MAC addresses
- ▶ Field Upgradeable Firmware

Applications:

- Ethernet in the First Mile (EFM)
- Fiber to the Premise (FTTP), E-Line and E-LAN
- Enterprise markets

Remotely Managed 10/100 NID IP or OAM Management



Specifications

| | |
|-----------------------|--|
| Standards | IEEE Std. 802.3, IEEE Std. 802.3ah, IEEE Std. 802.1P, IEEE Std. 802.1Q |
| Data Rate | Copper: 10/100 Mbps Fiber: 100 Mbps |
| Filtering Addresses | 8K MAC Addresses |
| Max Frame Size | 1628 bytes |
| Dimensions | Width: 3.4" [86 mm] Depth: 5.0" [127 mm] Height: 1.0" [25 mm] |
| Power Consumption | 4.8 Watts |
| Power | Input 100-240VAC, 1A Output 12 VDC, 1.25A |
| Environment | 0 – 50°C; 5% – 95% humidity non-condensing; 0 – 10,000 ft. altitude |
| Shipping Weight | 2 lbs. [0.90 kg] |
| Regulatory Compliance | EN55024, FCC Class A, CE Mark, UL |
| Warranty | Lifetime |

10/100 Bridging

Ordering Information

SFBRM1040-140
10/100BASE-TX (RJ-45) [100 m/328 ft.]
to (2) 100BASE-X SFP Slots (empty)

Note: unit features USB port for local management application.

Optional Accessories (sold separately)

SFP Modules

Wide Input (24 - 60 VDC) Power Supplies

SPS-2460-PS
Piggy Back Power Supply

SPS-2460-SA
Stand-Alone Power Supply

Mounting Options

E-MCR-05
12-Slot Media Converter Rack

RMS19-SA4-01
4-Slot Media Converter Shelf

WMBD
DIN Rail Bracket 5.0" [127 mm]

WMBL
Wall Mount Bracket 4.0" [102 mm]

USB Cables

USBC-AM-BM-03
USB 2.0 Cable A male to B male
[3 ft. Gray]

USBC-AM-BM-06
USB 2.0 Cable A male to B male
[6 ft. Gray]