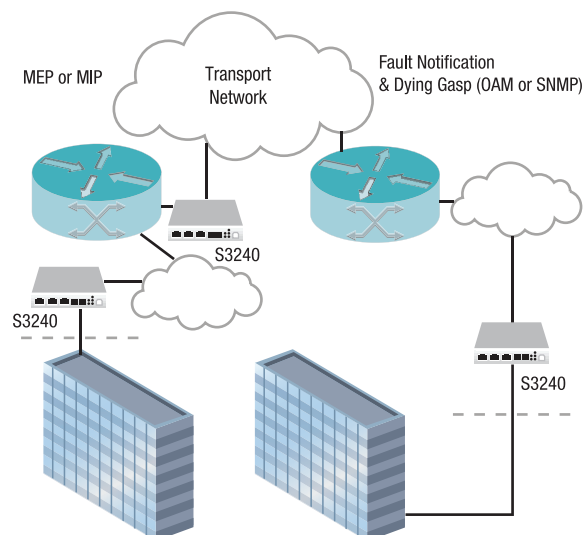


stand-alone device for the ion platform

**S3240****Remotely Managed NID (Network Interface Device)****Features**

- ▶ MEF 9, 14 + 21 certified
- ▶ 802.3ah Link OAM
- ▶ 802.1ag Services OAM
- ▶ ITU Y.1731
- ▶ Redundant Power AC/DC
- ▶ Fanless
- ▶ 10K Jumbo Frame Support
- ▶ IP-Based Remote Management
- ▶ AutoCross™
- ▶ Auto-Negotiation
- ▶ Pause
- ▶ Remote Loopback
- ▶ Field Upgradable Firmware
- ▶ IEEE 802.1p QoS packet classification
- ▶ IPv4 IP TOS, DiffServ and IPv6 traffic class QoS classification
- ▶ IEEE 802.1q VLAN and double VLAN tagging with 4096 VIDs
- ▶ DHCP client
- ▶ SNMP
- ▶ TFTP
- ▶ RADIUS client
- ▶ RMON counters for each port
- ▶ Bandwidth profiling
- ▶ DMI Optical Management
- ▶ Cable diagnostic function for TP ports
- ▶ SSH
- ▶ Telnet
- ▶ Command Line Interface (CLI)
- ▶ Web management
- ▶ Focal Point Management
- ▶ SNMP v1 & v2c
- ▶ USB port for basic setup
- ▶ Management VLAN

**Complete End to End Visibility**

Standard	Access	Core	Access	OAM
MEF & ITU-T	↔			Service
802.1ag, Y.1731	↔			Connectivity
IEEE	↔			Link

Remote Troubleshooting and Diagnostics  
802.3ah, 802.1ag, Y.1731, SNMP traps, Provider Visibility & Control

**Specifications**

Standards	IEEE Std. 802.3, IEEE Std. 802.3ah, IEEE Std 802.1P, IEEE Std. 802.1Q
Data Rate	<b>Copper:</b> 10/100/1000 Mbps <b>Fiber:</b> 100/1000 Mbps*
Filtering Address	8 K MAC Addresses
Max Frame Size	10,240 bytes
Dimensions	<b>Width:</b> 5.53" [140 mm] <b>Depth:</b> 6.5" [165 mm] <b>Height:</b> 1.75" [44 mm]
Power	<b>Inputs:</b> Redundant 18-57VDC 100-240VAC external power supply
Operating Temperature	-10°C to 65°C
Altitude	0-10,000 ft.
Operating Humidity	5-95% (non-condensing)
Shipping Weight	4.0 lbs. [1.81 kg]
Regulatory Compliance	EN55022 Class A, EN55024, UL60950, CE Mark
Warranty	Lifetime

\*SFP Ports support SGMII for use with 10/100/1000BASE-T copper SFPs

**Ordering Info****S3240**

(3) 10/100/1000BASE-T (RJ-45) [100 m]  
to (2) 100/1000Base-X Open SFP Slots

**Optional Accessories** (sold separately)

**SFP Modules****Mounting Options****S3240-RMS**

19" Rack Mount Kit for single S3240 in 1RU

**S3240-RMD**

19" Rack Mount Kit for (2) S3240s in 1RU

**Applications**

- ▶ Ethernet in the First Mile (EFM)
- ▶ Fiber-to-the-Premise (FTTP)
- ▶ E-Line Services
- ▶ Enterprise Markets

The S3240 of Network Interface Device (NID) is a multi-service NID that provide SLA-assurance and advance fault management that is compliant with MEF and IEEE standards. The S3240 is designed for business Ethernet and mobile backhaul deployments. The S3240 is MEF 9, 14 & 21 certified. The S3240 is a multi-port 10/100/1000Mbps product with advance features including – IEEE 802.1ag Service OAM, IEEE 802.3ah Link OAM, ITU Y.1731 Performance Monitoring, VLAN, QoS, SSH/SSL, jumbo frame support and bandwidth allocation. The S3240 also offers multiple power inputs for redundancy and an extended operating temperature.