



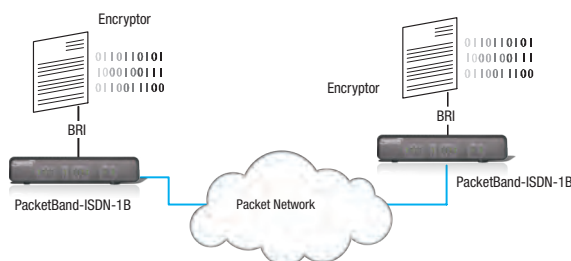
packetband-isdn

ISDN PacketBand-ISDN-1B



Features

- ▶ Product version supports a single ISDN BRI
- ▶ Provides low-cost migration to IP networks for legacy equipment
- ▶ Low-cost solution for carriers wanting to deliver ISDN services
- ▶ US-ANSI and Euro-ETSI ISDN available
- ▶ Transmits all data and voice protocols over packet networks
- ▶ Totally transparent to all data formats
- ▶ Any "B" channel can dial any other on the packet network, or "break-out/in" via a "gate way" PacketBand to national/international ISDN
- ▶ All PacketBands and interfaces synchronized to the same clocks
- ▶ Internal AC, DC and POE power options
- ▶ SIP Server option for centralized call routing
- ▶ Various clocking options with high quality clock recovery
- ▶ Configurable packet size
- ▶ Compensates for "jitter" or packet delay variation
- ▶ Re-orders packets
- ▶ Very low latency or processing delay
- ▶ Two 10/100 Base Ethernet ports; one to WAN (Packet Network) and one to a local Ethernet port
- ▶ Ethernet ports support Rate Limiting
- ▶ Quality of Service (QoS) options
- ▶ VLAN and Double VLAN tagging
- ▶ Full cross-connectivity
- ▶ Supports NT presentation (connects to local equipment and acts like a network)
- ▶ Support for contention or over-booking
- ▶ Call Progress Tone generation
- ▶ Sophisticated number manipulation/conversion/LCR
- ▶ Automatic Primary/Secondary/Tertiary routing options
- ▶ Routing profiles can be scheduled at different times of the day/week
- ▶ ISDN Layer 2 and Layer 3 message capture and log for analysis
- ▶ Easy and intuitive to configure via GUI management package
- ▶ Compact table-top with optional rack-mount extenders
- ▶ Approved (Emissions & Safety)
- ▶ RoHS compliant



Deliver switched, transparent, synchronous, ISDN data services across asynchronous packet networks.

Specifications

| | |
|---------------------|---|
| BRI Interface | Support for one BRI Typical driving distance – typically 500m Overlap to En-Bloc conversion |
| ETSI (Euro-ISDN) | RJ45 1200hm balanced Point-to-Point and Point-to-Multipoint ETSI-DSS1 (Euro-ISDN) ETSI Q.931/921 ETSI 300-011 (Layer 1) ETSI 300-125 (layer 2) ETSI 300-102 (layer 3)* |
| Packet Ports (x2) | RJ45 standard twisted-pair CAT5E cable Typical driving distance 500m–1,500m per Link depending on data rate and cable Supports data rates up to 50Mbps full-duplex between two units Provides management access to all units with Ethernet card in PC |
| Serial Control Port | Access password protected Asynchronous, 8 data, 1 stop bit, no parity speed 9.6 to 115kbps |
| Safety | IEC60950-1:2002 including National differences AS/NZS3260:1993 ACS/NZS60950:2000 ACA TS001:1997 |
| ANSI (US-ISDN) | RJ45 1000hm balanced Support for SPIDs and Auto-SPID NI-1 North American National DMS-100 and 5ESS switch variants AT&T TR-62411 and ANSI T1.403 |
| Power | Internal AC PSU Standard IEC connector 95-240 VAC; 15W; 47-63Hz Auto-sensing Standard IEC connector Max consumption 0.2Amps RMS @230VAC |
| Dimensions | Width: 8.6" [225 mm] Depth: 7.86" [200 mm] Height: 1.73" [44 mm] |
| Environment | Operating Temperature -20°C to +55°C Humidity 10-90% non-condensing |
| Warranty | 1 year hardware & software |

Ordering Information

PB-ISDN-1BNT-AC

Single BRI NT port, 2 logical links. AC power. Includes serial control cable and DbManager Lite.

PB-ISDN-1BTE-AC

Single BRI TE port, 2 logical links. AC power. Includes serial control cable and DbManager Lite.

Optional Accessories (sold separately)

PB/cont

Replacement serial controller cable

PB/RMK/3/D

19" rack kit for 2 units side by side

PB/RMK/3/S

19" rack kit for single unit

PB/RMK/W/1

Wall mount kit