

## 1880ECA1-50

50 PAIR - INDOOR BET - 110/110 - COVER & SPLICE CHAMBER

### Product Specifications

### UL497 Primary Protector for Communication Circuits

NAFTA Country of Origin: CANADA - All Models are "Buy America Act" Approved.

These 16 AWG steel building entrance terminals feature an industry standard 110 - style connector for both the input and output terminals. Also included are multiple external and internal ground lugs. UL approved standard on all terminals. Standard 5-pin protection modules, available in gas tube, solid state and hybrid versions, can be purchased separately. Call for more detailed information on RDUP/RUS-listed units.

## Features & Benefits

- 16 AWG Powder Coated Steel Construction
- Equipped with an Internal 26 AWG Fuse Link
- External Ground Connectors Accept 6 - 14 AWG Wire
- Industry Standard 5 Pin Design
- Exceeds UL497 Primary Protection Standards
- Stackable with Connection Grommets Included
- 110 Connector Accepts 22 - 26 AWG Wire



1880ECA1-50

### Ordering Information

Model Number	Stock Code	Pair Count	Input	Output	Dimensions (H" x W" x D")	Weight (lbs)
1880ECA1-50	316016	50	110	110	9.20 x 15.25 x 4.75	15



# Building Entrance Terminals

INDOOR - 110 CONNECTOR SERIES - BET

## 1880ECA1-50

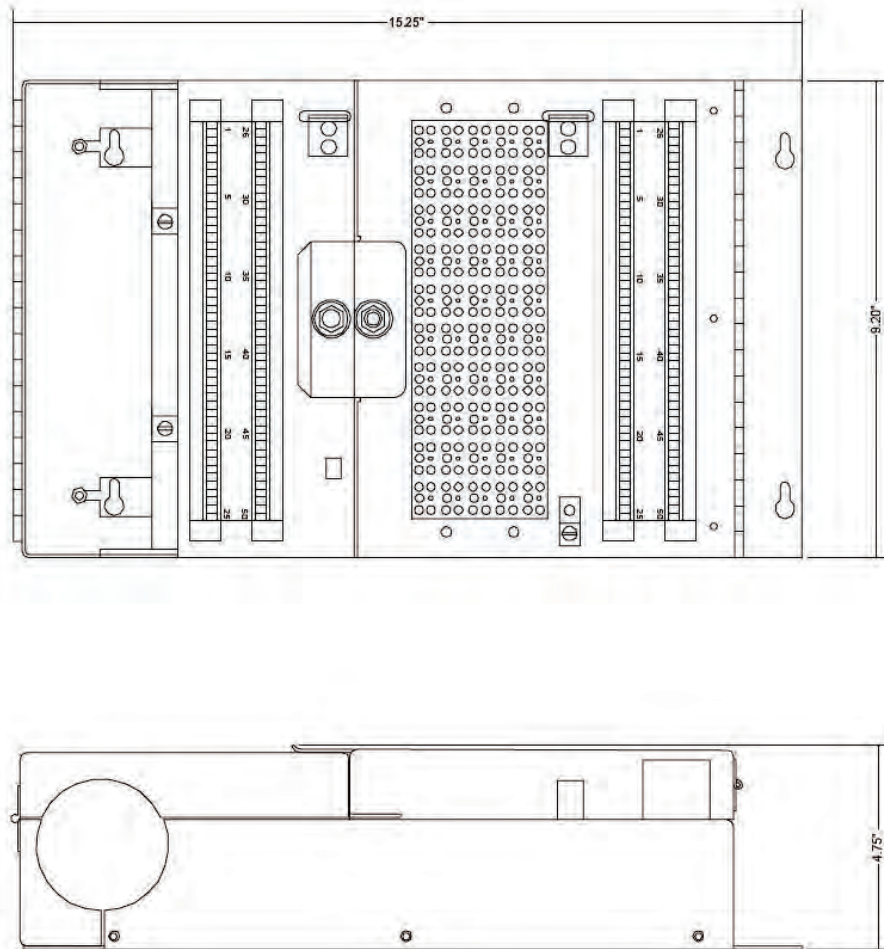
50 PAIR - INDOOR BET - 110/110 - COVER & SPLICE CHAMBER



### Physical Dimensions

### UL497 Primary Protector for Communication Circuits

9.20 x 15.25 x 4.75  
(H" x W" x D")



### Notes

#### Installation:

Indoor Wall Mount

Previous Model Number : 1880ECA1-50G

Splice Chamber: Separate enclosure and cover for OPS gel filled Input cable

Circa Telecom, Inc © 2013 - Version 1.03

6914 W. Linebaugh Ave - Tampa, FL 33625  
Phone 800.783.6556 - Fax 813.676.2060 - Email [circatech@circatelecom.com](mailto:circatech@circatelecom.com) - [www.circatelecom.com](http://www.circatelecom.com)