



Building Entrance Terminals

INDOOR - 110 CONNECTOR SERIES - BET



1880ECA1-25

25 PAIR - INDOOR BET - 110/110 - COVER & SPLICE CHAMBER

Product Specifications

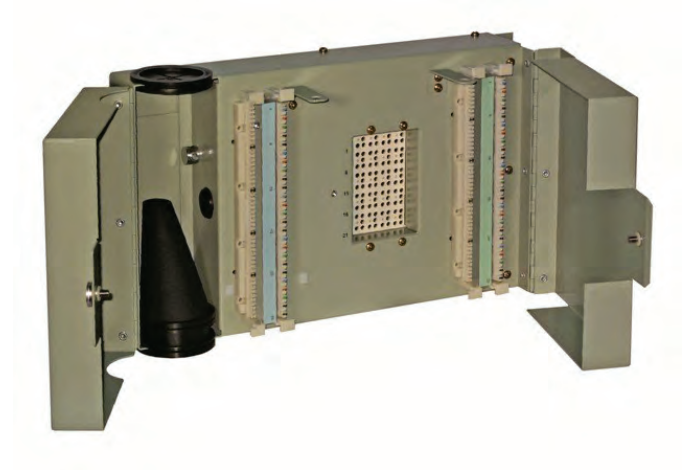
UL497 Primary Protector for Communication Circuits

NAFTA Country of Origin: CANADA - All Models are "Buy America Act" Approved.

These 16 AWG steel building entrance terminals feature an industry standard 110 - style connector for both the input and output terminals. Also included are multiple external and internal ground lugs. UL approved standard on all terminals. Standard 5-pin protection modules, available in gas tube, solid state and hybrid versions, can be purchased separately. Call for more detailed information on RDUP/RUS-listed units.

Features & Benefits

- 16 AWG Powder Coated Steel Construction
- Equipped with an Internal 26 AWG Fuse Link
- External Ground Connectors Accept 6 - 14 AWG Wire
- Industry Standard 5 Pin Design
- Exceeds UL497 Primary Protection Standards
- Stackable with Connection Grommets Included
- 110 Connector Accepts 22 - 26 AWG Wire



1880ECA1-25

Ordering Information

Model Number	Stock Code	Pair Count	Input	Output	Dimensions (H" x W" x D")	Weight (lbs)
1880ECA1-25	304004	25	110	110	9.20 x 15.25 x 4.75	14



Building Entrance Terminals

INDOOR - 110 CONNECTOR SERIES - BET



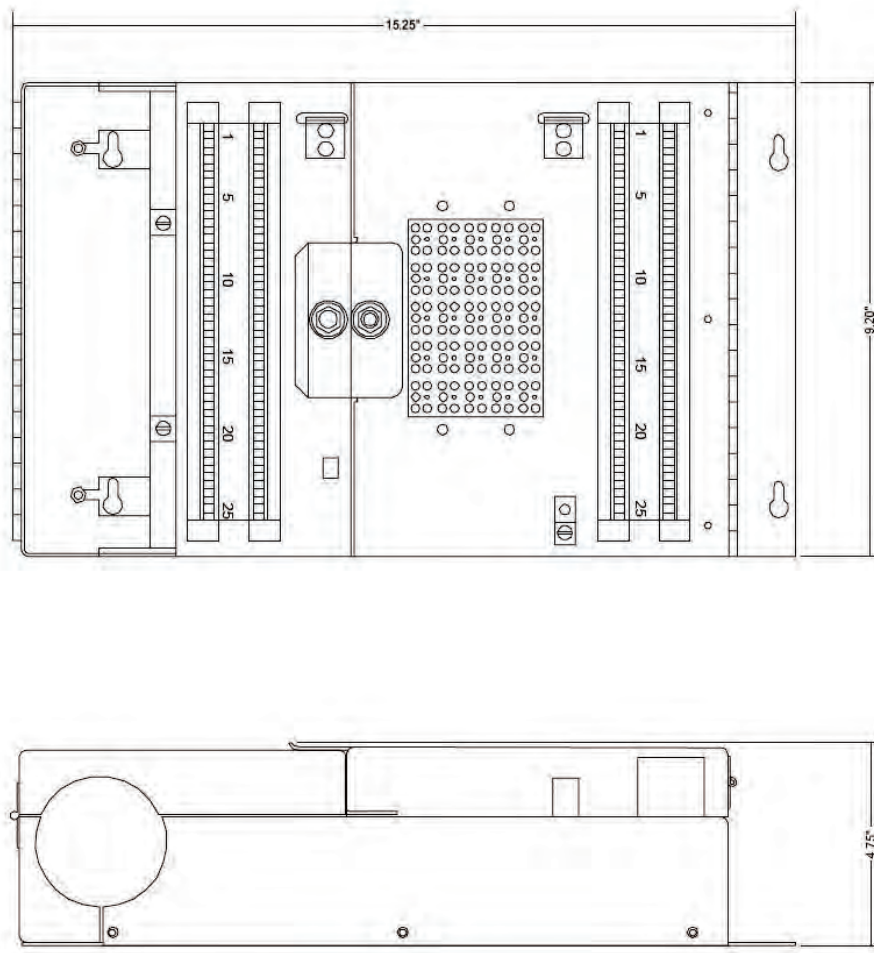
1880ECA1-25

25 PAIR - INDOOR BET - 110/110 - COVER & SPLICE CHAMBER

Physical Dimensions

UL497 Primary Protector for Communication Circuits

9.20 x 15.25 x 4.75
(H" x W" x D")



Notes

Installation:

Indoor Wall Mount

Previous Model Number : 1880ECA1-25G

Splice Chamber: Separate enclosure and cover for OPS gel filled Input cable

Circa Telecom, Inc © 2013 - Version 1.03

6914 W. Linebaugh Ave - Tampa, FL 33625
Phone 800.783.6556 - Fax 813.676.2060 - Email circatech@circa telecom.com - www.circa telecom.com