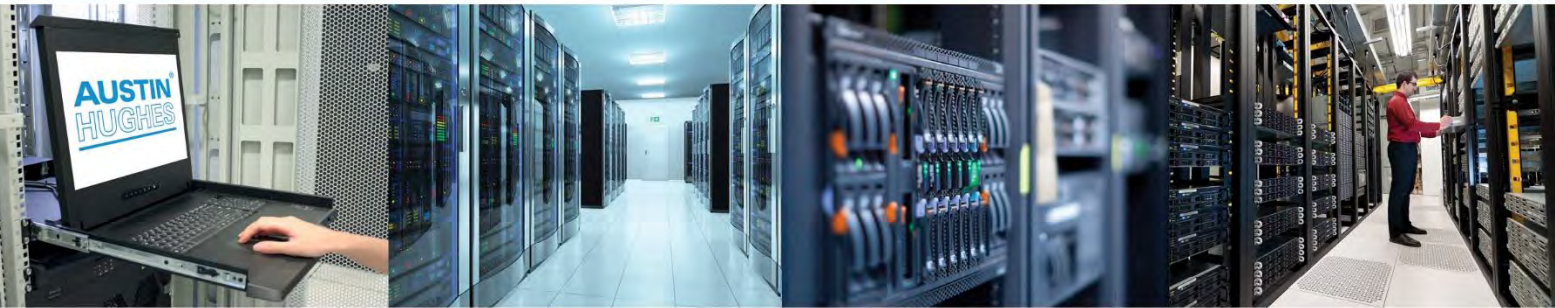




POWER



ATS Automatic Transfer Switch - 230V

- Redundant power for single corded equipment
- Auto switching relay for seamless power transfer
- Input preferences switch for priority power feed
- LED meter for true RMS local current monitoring

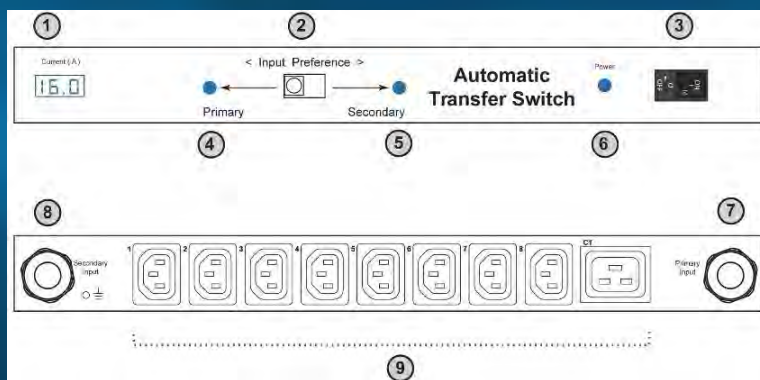
Power redundancy for single corded devices; power downtime or disruption is never acceptable for data centre equipment. It is common for mission critical devices to apply primary and secondary power sources. However, some network devices and entry-level servers are not designed with power redundancy. For single corded equipment Austin Hughes **InfraPower ATS provides dual power sources.** If the primary source becomes unavailable, it switches to the secondary power source seamlessly.

Highly efficient for multiple devices; InfraPower ATS with outlets provides power distribution features. One ATS cost effectively provides **power redundancy** to multiple pieces of critical equipment. InfraPower offers ATS rack mount models with **8 to 20 IEC outlets.** Custom configurations available on request.

Input preference switch; sometimes manual power input switching function is essential, especially during maintenance in data centres. The InfraPower ATS is bundled with an input preference switch allowing

Users to set the power source preference to supply the output.

InfraPower ATS allows true **RMS local AMP measurement** via a digital meter. Blue LED display is easy-to-read from a distance and allows rapid access to the aggregate load on the circuit. It **prevents circuit overloads** during equipment installation and **allows the user to plan the capacity based on actual real time current monitoring.**



- 1 Local Current Meter
- 2 Input Preference Switch
- 3 Circuit Breaker
- 4 Power LED - primary input
- 5 Power LED - secondary input
- 6 Power LED - outlets
- 7 Primary Input attached with 3M cord & inlet plug
- 8 Secondary Input attached with 3M cord & inlet plug
- 9 Outlets

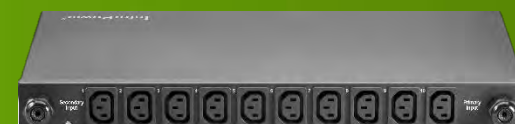
SPECIFICATION

ELECTRICAL

Normal input voltage	230V
Acceptable input voltage	±10% normal
Input frequency	50/60Hz
Inlet plug & cord	2 x C14 / C20 / EN16 60309 plug with 3 meter cord
Outlet connectors	Multiple C13 / C19 outlets
Local meter	3 digital LED current meter
Overload protection	1 x 10 amp circuit breakers for C14 inlet 1 x 16 amp circuit breaker for C20 / EN16 60309 inlet
Transfer time	25 minutes maximum
Electrical endurance	1 x 10 ⁵ operations
Power consumption	Approx. 8VA

PHYSICAL

	1U	2U
Product (W x D x H)	442 x 270 x 43.5 mm	442 x 270 x 87.5 mm
Packaging (W x D x H)	530 x 380 x 80 mm	530 x 380 x 140 mm
Net Weight	4.6 kg (10.1lb)	6.5 kg (14.3lb)
Gross Weight	5.1 kg (11.2lb)	7 kg (15.4lb)
Chassis Colour	Black	
Chassis Materials	Steel	



ENVIRONMENTAL

Operating temperature	-5 to 45°C degree (23 to 113°F)
Storage temperature	-25 to 65°C degree (13 to 149°F)
Operating / Storage Humidity	0-95%, non-condensing

COMPLIANCE

EMC	FCC & CE Certified
Safety	LVD Certified
Environment	RoHS2 & REACH compliant

1U MODEL	Outlets		Amp	Inlet 3M Cord Attached
	C13	C19		
	8	-	10A	C14
	10	-	10A	C14
	8	-	16A	EN16 60309
	10	-	16A	EN16 60309
	8	1	16A	EN16 60309
	8	-	16A	C20
	10	-	16A	C20
	8	1	16A	C20

2U MODEL	Outlets		Amp	Inlet 3M Cord Attached
	C13	C19		
	12	-	10A	C14
	16	-	10A	C14
	12	-	16A	EN16 60309
	16	-	16A	EN16 60309
	20	-	16A	EN16 60309
	16	2	16A	EN16 60309
	12	-	16A	C20
	16	-	16A	C20
	20	-	16A	C20
	16	2	16A	C20