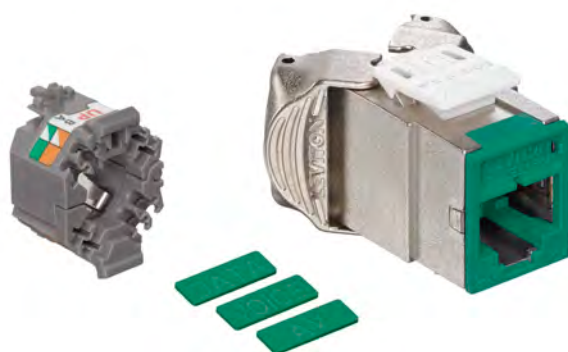


## Atlas-X1™ Cat 6A Component-Rated Shielded QuickPort® Connector

### APPLICATION

The Atlas-X1 Cat 6A Component-Rated Shielded QuickPort Connector supports 10GBASE-T networks. The shielded connector provides superior alien crosstalk (AXT) suppression and protects critical data from potential EMI/RFI (electromagnetic interference/radio frequency interference). The connector is part of a complete Atlas-X1 Cat 6A shielded system ideal for government, healthcare, manufacturing, transportation, gaming, and other environments where EMI/RFI and/or security may be a concern.



### SPECIFICATION

The shielded connector shall meet or exceed all requirements for Category 6A as described in ANSI/TIA-568-C.2, as well as Class E<sub>A</sub> requirements as described in ISO/IEC 11801. The connector shall comply with all National Electrical Codes, be compliant with ANSI/TIA-1096-A, be UL listed, and be independently verified. The connector shall be encased in a die-cast housing to protect from potential EMI/RFI. The connector shall support tool-free termination/re-termination and shall not require a specialized termination tool. The connector wiring shall be universal to accommodate T568A and T568B wiring schemes. The connector shall be available in 13 colors; more than established by the ANSI/TIA-606 standard. The connector shall be supplied with interchangeable icons, and be offered in shuttered and standard styles.

### WARRANTY INFORMATION

For a copy of Leviton product warranties, visit [www.leviton.com/warranty](http://www.leviton.com/warranty).

### FEATURES

- Independently tested and guaranteed to exceed all component, permanent link, and channel margins
- Patented Retention Force Technology (RFT) protects against time damage from 4- or 6-pin plugs
- Shielding provides EMI/RFI protection, signal isolation, and excellent alien crosstalk (AXT) suppression
- Unique design supports tool-free termination/re-termination and requires no specialized termination tool
- Short connector design supports a wider range of applications (e.g. shallow boxes, enclosures, bend radius, etc.)
- Available in 13 ANSI/TIA-606-B compatible colors for color coding or organization
- Connector supplied with interchangeable icons (voice, data, A/V, and blank, color coded to match the connector face) for easy identification and tracking of data, voice, or other functions
- Connector with internal shutter is available to protect against dust and debris

### DESIGN CONSIDERATIONS

- Fits most QuickPort applications in patch panels, faceplates, and surface-mount boxes
- Can be used to terminate all types of shielded cable
- To identify ports, use different colored modules and icons for each application (full selection of ANSI/TIA-606 compatible colors, 13 available)
- Robust housing and shutter protects the connector in harsh environments

### STANDARDS COMPLIANCE

- ANSI/TIA-568-C.0
- ANSI/TIA-568-C.1
- ANSI/TIA-568-C.2 (Cat 6A)
- ISO/IEC 11801 Class E<sub>A</sub>
- IEEE 802.3an 10GBASE-T
- IEEE 802.3af Power over Ethernet (PoE)
- IEEE 802.3at Power over Ethernet Plus (PoE+)
- ANSI/TIA-1096-A (formerly FCC Part 68)
- EN 50173

### PHYSICAL SPECIFICATIONS

Dimensions: See page two

Materials: **Connector Body:** Die-cast zinc

**Spring-Wire Contacts:** High-quality, copper-based alloy, plated with 50 micro-inches of gold for lowest contact resistance and maximum life

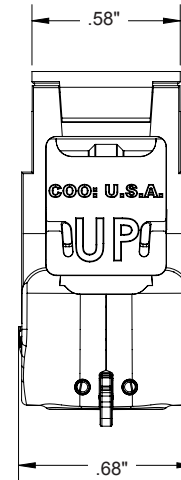
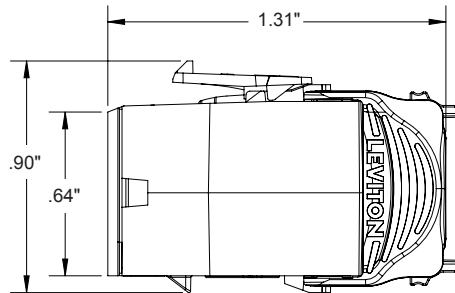
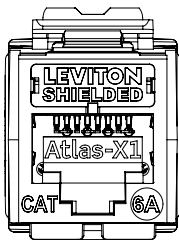
### COUNTRY OF ORIGIN

USA

**ELECTRONIC FILES**

For CAD files, typical specs, or technical drawings (.DXF, .DWG), visit [www.leviton.com](http://www.leviton.com).

**6ASJK-xx6, ICONS-ICx**



**PART NUMBERS**

| Description  | Standard Connector | Connector w/ Shutters |
|--|--------------------|-----------------------|
| Atlas-X1™ Cat 6A Component-Rated Shielded QuickPort® Connector, white      | 6ASJK-RW6          | 6ASJK-SW6             |
| Atlas-X1 Cat 6A Component-Rated Shielded QuickPort Connector, light almond | 6ASJK-RT6          | 6ASJK-ST6             |
| Atlas-X1 Cat 6A Component-Rated Shielded QuickPort Connector, ivory        | 6ASJK-RI6          | 6ASJK-SI6             |
| Atlas-X1 Cat 6A Component-Rated Shielded QuickPort Connector, yellow       | 6ASJK-RY6          | 6ASJK-SY6             |
| Atlas-X1 Cat 6A Component-Rated Shielded QuickPort Connector, orange       | 6ASJK-RO6          | 6ASJK-SO6             |
| Atlas-X1 Cat 6A Component-Rated Shielded QuickPort Connector, crimson      | 6ASJK-RC6          | 6ASJK-SC6             |
| Atlas-X1 Cat 6A Component-Rated Shielded QuickPort Connector, dark red     | 6ASJK-RR6          | 6ASJK-SR6             |
| Atlas-X1 Cat 6A Component-Rated Shielded QuickPort Connector, purple       | 6ASJK-RP6          | 6ASJK-SP6             |
| Atlas-X1 Cat 6A Component-Rated Shielded QuickPort Connector, blue         | 6ASJK-RL6          | 6ASJK-SL6             |
| Atlas-X1 Cat 6A Component-Rated Shielded QuickPort Connector, green        | 6ASJK-RV6          | 6ASJK-SV6             |
| Atlas-X1 Cat 6A Component-Rated Shielded QuickPort Connector, grey         | 6ASJK-RG6          | 6ASJK-SG6             |
| Atlas-X1 Cat 6A Component-Rated Shielded QuickPort Connector, black        | 6ASJK-RE6          | 6ASJK-SE6             |
| Atlas-X1 Cat 6A Component-Rated Shielded QuickPort Connector, brown        | 6ASJK-RB6          | 6ASJK-SB6             |

Color-matched icons (ICONS-ICx) can be ordered separately in 72-quantity packs.

x = color

