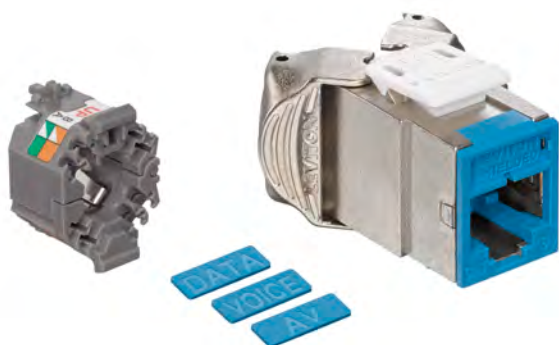


Atlas-X1™ Cat 6 Component-Rated Shielded QuickPort® Connector

APPLICATION

The Atlas-X1 Cat 6 Component-Rated Shielded QuickPort Connector supports 1000BASE-T networks. The shielded connector provides superior alien crosstalk (AXT) suppression and protects critical data from potential EMI/RFI (electromagnetic interference/radio frequency interference). The connector is part of a complete Atlas-X1 Cat 6 shielded system ideal for government, healthcare, manufacturing, transportation, gaming, and other environments where EMI/RFI and/or security may be a concern.



SPECIFICATION

The shielded connector shall meet or exceed all requirements for Category 6 as described in ANSI/TIA-568-C.2, as well as Class E requirements as described in ISO/IEC 11801. The connector shall comply with all National Electrical Codes, be compliant with ANSI/TIA-1096-A, be UL listed, and be independently verified. The connector shall be encased in a die-cast housing to protect from potential EMI/RFI. The connector shall support tool-free termination/re-termination and shall not require a specialized termination tool. The connector wiring shall be universal to accommodate T568A and T568B wiring schemes. The connector shall be available in 13 colors; more than established by the ANSI/TIA-606 standard. The connector shall be supplied with interchangeable icons, and be offered in shuttered and standard styles.

WARRANTY INFORMATION

For a copy of Leviton product warranties, visit www.leviton.com/warranty.

FEATURES

- Independently tested and guaranteed to exceed all component, permanent link, and channel margins
- Patented Retention Force Technology (RFT) protects against time damage from 4- or 6-pin plugs
- Shielding provides EMI/RFI protection, signal isolation, and excellent alien crosstalk (AXT) suppression
- Unique design supports tool-free termination/re-termination and requires no specialized termination tool
- Short connector design supports a wider range of applications (e.g. shallow boxes, enclosures, bend radius, etc.)
- Available in 13 ANSI/TIA-606-B compatible colors for color coding or organization
- Connector supplied with interchangeable icons (voice, data, A/V, and blank, color coded to match the connector face) for easy identification and tracking of data, voice, or other functions
- Connector with internal shutter is available to protect against dust and debris

DESIGN CONSIDERATIONS

- Fits all QuickPort applications in patch panels, faceplates, and surface-mount boxes
- Can be used to terminate all types of shielded cable
- To identify ports, use different colored modules and icons for each application (full selection of ANSI/TIA-606 compatible colors, 13 available)
- Robust housing and shutter protects the connector in harsh environments

STANDARDS COMPLIANCE

- ANSI/TIA-568-C.0
- ANSI/TIA-568-C.1
- ANSI/TIA-568-C.2 (Cat 6)
- ISO/IEC 11801 Class E
- IEEE 802.3af Power over Ethernet (PoE)
- IEEE 802.3at Power over Ethernet Plus (PoE+)
- ANSI/TIA-1096-A (formerly FCC Part 68)
- EN 50173

PHYSICAL SPECIFICATIONS

Dimensions: See page two

Materials: **Connector Body:** Die-cast zinc

Spring-Wire Contacts: High-quality, copper-based alloy, plated with 50 micro-inches of gold for lowest contact resistance and maximum life

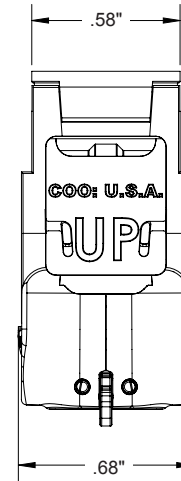
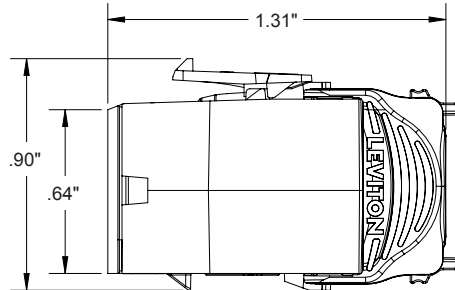
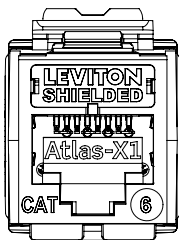
COUNTRY OF ORIGIN

USA

61SJK-xx6, ICONS-ICx

ELECTRONIC FILES

For CAD files, typical specs, or technical drawings (.DXF, .DWG), visit www.leviton.com.



61SJK-xx6, ICONS-ICx

PART NUMBERS

Description	Standard Connector	Connector w/ Shutters
Atlas-X1™ Cat 6 Component-Rated Shielded QuickPort® Connector, white	61SJK-RW6	61SJK-SW6
Atlas-X1 Cat 6 Component-Rated Shielded QuickPort Connector, light almond	61SJK-RT6	61SJK-ST6
Atlas-X1 Cat 6 Component-Rated Shielded QuickPort Connector, ivory	61SJK-RI6	61SJK-SI6
Atlas-X1 Cat 6 Component-Rated Shielded QuickPort Connector, yellow	61SJK-RY6	61SJK-SY6
Atlas-X1 Cat 6 Component-Rated Shielded QuickPort Connector, orange	61SJK-RO6	61SJK-SO6
Atlas-X1 Cat 6 Component-Rated Shielded QuickPort Connector, crimson	61SJK-RC6	61SJK-SC6
Atlas-X1 Cat 6 Component-Rated Shielded QuickPort Connector, dark red	61SJK-RR6	61SJK-SR6
Atlas-X1 Cat 6 Component-Rated Shielded QuickPort Connector, purple	61SJK-RP6	61SJK-SP6
Atlas-X1 Cat 6 Component-Rated Shielded QuickPort Connector, blue	61SJK-RL6	61SJK-SL6
Atlas-X1 Cat 6 Component-Rated Shielded QuickPort Connector, green	61SJK-RV6	61SJK-SV6
Atlas-X1 Cat 6 Component-Rated Shielded QuickPort Connector, grey	61SJK-RG6	61SJK-SG6
Atlas-X1 Cat 6 Component-Rated Shielded QuickPort Connector, black	61SJK-RE6	61SJK-SE6
Atlas-X1 Cat 6 Component-Rated Shielded QuickPort Connector, brown	61SJK-RB6	61SJK-SB6

Color-matched icons (ICONS-ICx) can be ordered separately in 72-quantity packs.

x = color

