

Product Specifications



R090MH0600LSG

Straight Section for WR90, 8.2–12.4 GHz, with interface types PDR100 and UDR100, 600 mm, gray



CHARACTERISTICS

Electrical Specifications

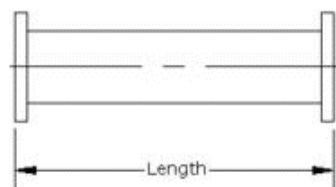
Operating Frequency Band 8.2 – 12.4 GHz

VSWR 1.05

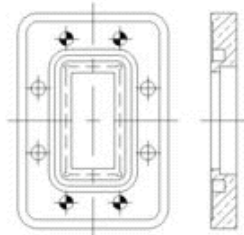
General Specifications

Component	Straight Section
Waveguide Size	WR90 WG16 R100
Finish	Gray
Interface	PDR100
Interface 2	UDR100
Length	600 mm 24 in

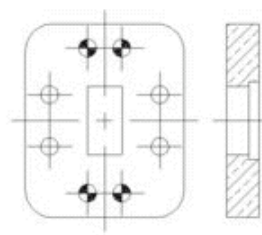
Component



Interface



Interface 2



Regulatory Compliance/Certifications

Agency	Classification
ISO 9001:2008	Designed, manufactured and/or distributed under this quality management system

www.commscope.com/andrew

©2011 CommScope, Inc. All rights reserved.
All trademarks identified by ® or ™ are registered trademarks or trademarks, respectively, of CommScope. All specifications are subject to change.
See www.commscope.com/andrew for the most current information.

page 1 of 1
5/2/2011