



PM-SU2-96
Universal Sliding Pipe Mount Kit for 2-3/8 in OD x 96 in pipe

Dimensions

Mounting Diameter, maximum	203.2 mm		8 in
Mounting Diameter, minimum	0.0 mm		0 in
Pipe Outer Diameter	60.3 mm		2 3/8 in
Height	2438.4 mm		96.0 in
Length	304.8 mm		12.0 in
Weight	51.7 kg		114.0 lb
Width	304.8 mm		12.0 in

Environmental Specifications

Wind Rating	120 mph (BWS) at 150 ft AGL
Wind Rating Test Method	TIA/EIA-222

General Specifications

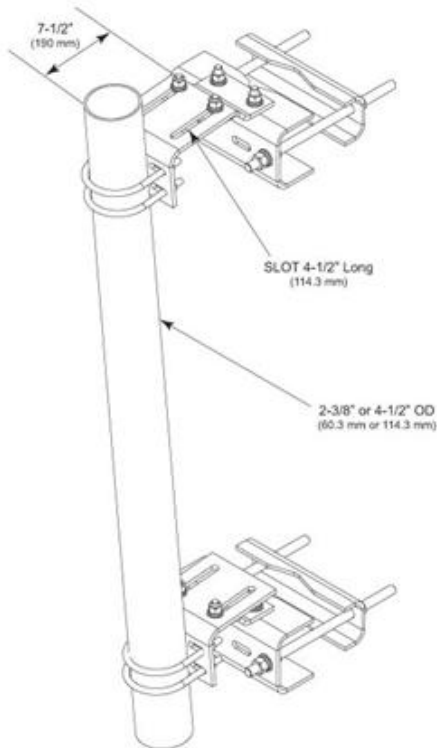
Product Type	Pipe mount
Pipe Length	2438.4 mm 96.0 in
Pipe, quantity	1
Tower Taper	Tapered
Includes	Pipe Sliding pipe mount brackets Universal saddle mount
Material Type	Hot dip galvanized steel
Mounting	Angle 60°, 203.2 mm (8 in) Angle 90°, 152.4 mm (6 in) Straight or tapered legs up to 203.2 mm (8 in) OD
Note	One 96 in x 8 in panel antenna per sector
Package Quantity	1

PM-SU2-96

POWERED BY



Outline Drawing



Regulatory Compliance/Certifications

Agency	Classification
ISO 9001:2008	Designed, manufactured and/or distributed under this quality management system

Included Products

MT-651-96 — Plain End Pipe, 2-3/8 in OD x 96 in

PM-SL2 — Universal Taper Pipe Mount Slider Bracket for 2-3/8 in OD pipe

SM-U2080 — Universal Saddle Mount for straight or tapered legs up to 8 in OD, 8 in angle 60°, or 6 in angle 90°

* Footnotes

Wind Rating BWS—Base Wind Speed; FBC—Florida Building Code