



MC-K14S-B

Monopole Co-location T-Frame Kit, 10 in to 30 in OD, 14 ft face

Dimensions

Face Width	4.4 m 14.5 ft
Mounting Diameter, maximum	762.0 mm 30 in
Mounting Diameter, minimum	254.0 mm 10 in
Pipe Outer Diameter	60.3 mm 2 3/8 in
Height	254.0 mm 10.0 in
Length	914.4 mm 36.0 in
Weight	377.4 kg 831.9 lb
Width	4419.6 mm 174.0 in

Environmental Specifications

EPA with 1/2 in (12 mm) radial ice	1.5 m ² 16.3 ft ²
EPA without ice	1.2 m ² 12.8 ft ²
Man Rating	250 lb vertical man load at 15 mph (BWS)
Wind Rating	120 mph (BWS) at 150 ft AGL 140 mph (3-second gust) at 150 ft AGL using Exposure D per FBC
Wind Rating Criteria	Four 72 in x 8 in panel antennas per sector
Wind Rating Test Method	TIA/EIA-222

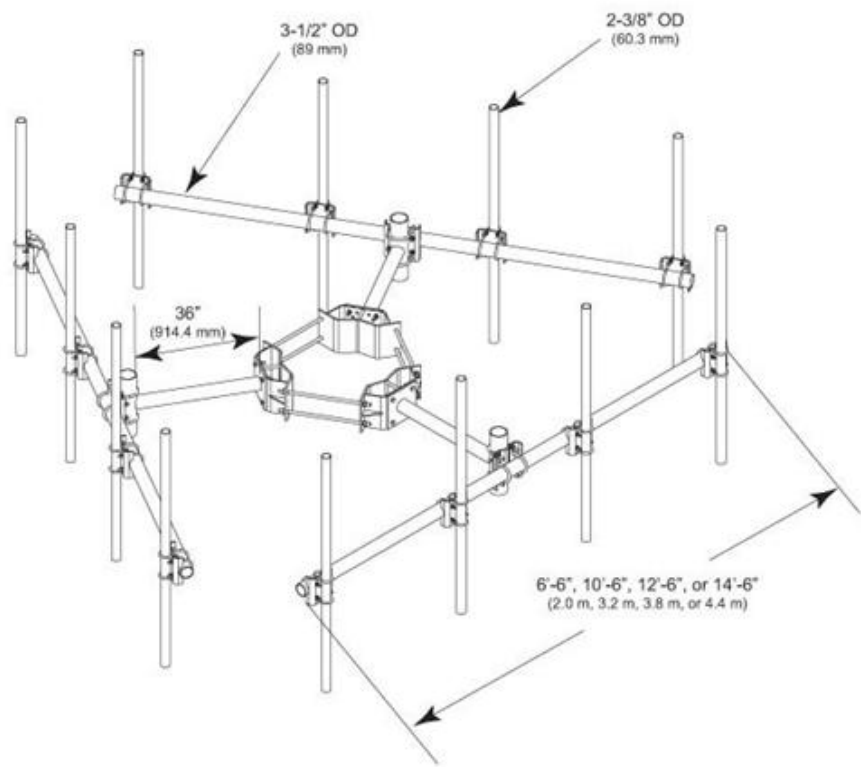
General Specifications

Product Type	Co-location t-frame kit
Pipe, quantity	0
Includes	Cellular pipe frames Ring mount Stand-off arms
Material Type	Hot dip galvanized steel
Mounting	Monopole, 254–762 mm (10–30 in) OD
Package Quantity	1
Sectors, quantity	3
Stand-off Distance	914.4 mm 36.0 in

MC-K14S-B



Outline Drawing



Regulatory Compliance/Certifications

Agency	Classification
ISO 9001:2008	Designed, manufactured and/or distributed under this quality management system

Included Products

- MT-216-14NS — Cellular Pipe Frame, 14 ft face
- MT-197 — Single Support Arm, 36 in, includes pipe
- MC-RM1030-3 — Universal Ring Mount, 10 in to 30 in OD

* Footnotes

EPA with 1/2 in (12 mm) radial ice	EPA—Effective Projected Area
EPA without ice	EPA—Effective Projected Area
Man Rating	BWS—Base Wind Speed
Wind Rating	BWS—Base Wind Speed; FBC—Florida Building Code