



## MC-K14L-12-72

**Monopole Co-location T-Frame Kit, 30 in to 60 in OD, 14 ft face, includes pipe**

### Dimensions

Face Width	4.4 m   14.5 ft
Mounting Diameter, maximum	1524.0 mm   60 in
Mounting Diameter, minimum	762.0 mm   30 in
Pipe Outer Diameter	60.3 mm   2 3/8 in
Height	1828.8 mm   72.0 in
Length	914.4 mm   36.0 in
Weight	610.4 kg   1345.7 lb
Width	4419.6 mm   174.0 in

### Environmental Specifications

EPA with 1/2 in (12 mm) radial ice	1.5 m <sup>2</sup>   16.3 ft <sup>2</sup>
EPA without ice	1.2 m <sup>2</sup>   12.8 ft <sup>2</sup>
Man Rating	250 lb vertical man load at 15 mph (BWS)
Wind Rating	120 mph (BWS) at 150 ft AGL   140 mph (3-second gust) at 150 ft AGL using Exposure D per FBC
Wind Rating Criteria	Four 72 in x 8 in panel antennas per sector
Wind Rating Test Method	TIA/EIA-222

### General Specifications

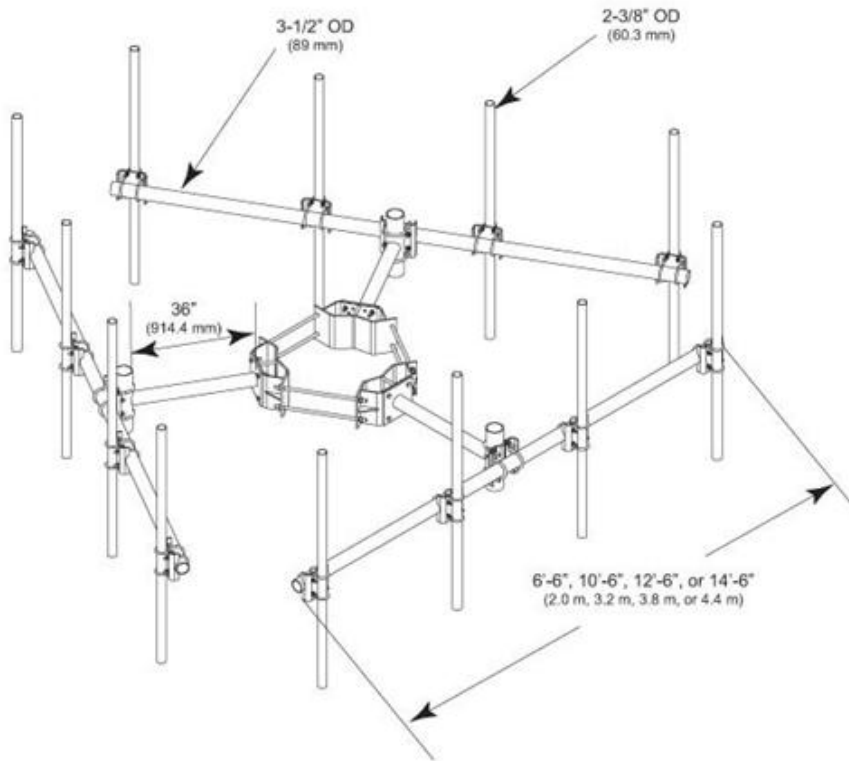
Product Type	Co-location t-frame kit
Pipe Length	1828.8 mm   72.0 in
Pipe, quantity	12
Includes	Cellular pipe frames   Pipe mounts   Ring mount   Stand-off arms
Material Type	Hot dip galvanized steel
Mounting	Monopole, 762–1524 mm (30–60 in) OD
Package Quantity	1
Sectors, quantity	3
Stand-off Distance	914.4 mm   36.0 in

MC-K14L-12-72

POWERED BY



## Outline Drawing



## Regulatory Compliance/Certifications

### Agency

ISO 9001:2008

### Classification

Designed, manufactured and/or distributed under this quality management system

## Included Products

MT-651 — Plain End Pipe, 2-3/8 in OD x 72 in

MT-219-H — Pipe Mount Hardware Kit

MC-K14L-B — Monopole Co-location T-Frame Kit, 30 in to 60 in OD, 14 ft face

- MT-216-14NS — Cellular Pipe Frame, 14 ft face
- MT-197 — Single Support Arm, 36 in, includes pipe
- MC-RM3060-3 — Universal Ring Mount, 30 in to 60 in OD

## \* Footnotes

EPA with 1/2 in (12 mm) radial ice EPA—Effective Projected Area

EPA without ice EPA—Effective Projected Area

# Product Specifications

COMMSCOPE®

MC-K14L-12-72



Man Rating

BWS—Base Wind Speed

Wind Rating

BWS—Base Wind Speed; FBC—Florida Building Code