



MC-K12L-B

Monopole Co-location T-Frame Kit, 30 in to 60 in OD, 12 ft face

Dimensions

Face Width	3.8 m 12.5 ft
Mounting Diameter, maximum	1524.0 mm 60 in
Mounting Diameter, minimum	762.0 mm 30 in
Pipe Outer Diameter	60.3 mm 2 3/8 in
Height	254.0 mm 10.0 in
Length	914.4 mm 36.0 in
Weight	399.2 kg 880.0 lb
Width	3810.0 mm 150.0 in

Environmental Specifications

EPA with 1/2 in (12 mm) radial ice	1.3 m ² 14.5 ft ²
EPA without ice	1.1 m ² 11.4 ft ²
Man Rating	250 lb vertical man load at 15 mph (BWS)
Wind Rating	120 mph (BWS) at 150 ft AGL 140 mph (3-second gust) at 150 ft AGL using Exposure D per FBC
Wind Rating Criteria	Four 72 in x 8 in panel antennas per sector
Wind Rating Test Method	TIA/EIA-222

General Specifications

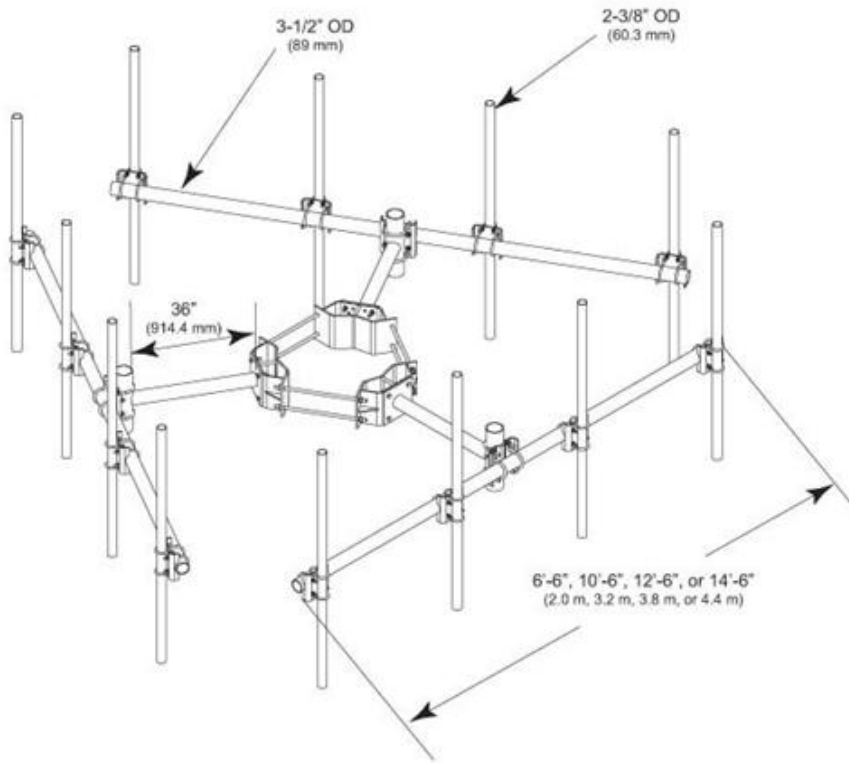
Product Type	Co-location t-frame kit
Pipe, quantity	0
Includes	Cellular pipe frames Ring mount Stand-off arms
Material Type	Hot dip galvanized steel
Mounting	Monopole, 762–1524 mm (30–60 in) OD
Package Quantity	1
Sectors, quantity	3
Stand-off Distance	914.4 mm 36.0 in

MC-K12LB

POWERED BY



Outline Drawing



Regulatory Compliance/Certifications

Agency

ISO 9001:2008

Classification

Designed, manufactured and/or distributed under this quality management system

Included Products

MT-216-NS — Cellular Pipe Frame, 12 ft face

MT-197 — Single Support Arm, 36 in, includes pipe

MC-RM3060-3 — Universal Ring Mount, 30 in to 60 in OD

* Footnotes

EPA with 1/2 in (12 mm) radial ice EPA—Effective Projected Area

EPA without ice EPA—Effective Projected Area

Man Rating BWS—Base Wind Speed

Wind Rating BWS—Base Wind Speed; FBC—Florida Building Code