



MC-K12L-6-96

Monopole Co-location T-Frame Kit, 30 in to 60 in OD, 12 ft face, includes pipe

Dimensions

Face Width	3.8 m 12.5 ft
Mounting Diameter, maximum	1524.0 mm 60 in
Mounting Diameter, minimum	762.0 mm 30 in
Pipe Outer Diameter	60.3 mm 2 3/8 in
Height	2438.4 mm 96.0 in
Length	914.4 mm 36.0 in
Weight	510.1 kg 1124.5 lb
Width	3810.0 mm 150.0 in

Environmental Specifications

EPA with 1/2 in (12 mm) radial ice	1.3 m ² 14.5 ft ²
EPA without ice	1.1 m ² 11.4 ft ²
Man Rating	250 lb vertical man load at 15 mph (BWS)
Wind Rating	120 mph (BWS) at 150 ft AGL 140 mph (3-second gust) at 150 ft AGL using Exposure D per FBC
Wind Rating Criteria	Four 72 in x 8 in panel antennas per sector
Wind Rating Test Method	TIA/EIA-222

General Specifications

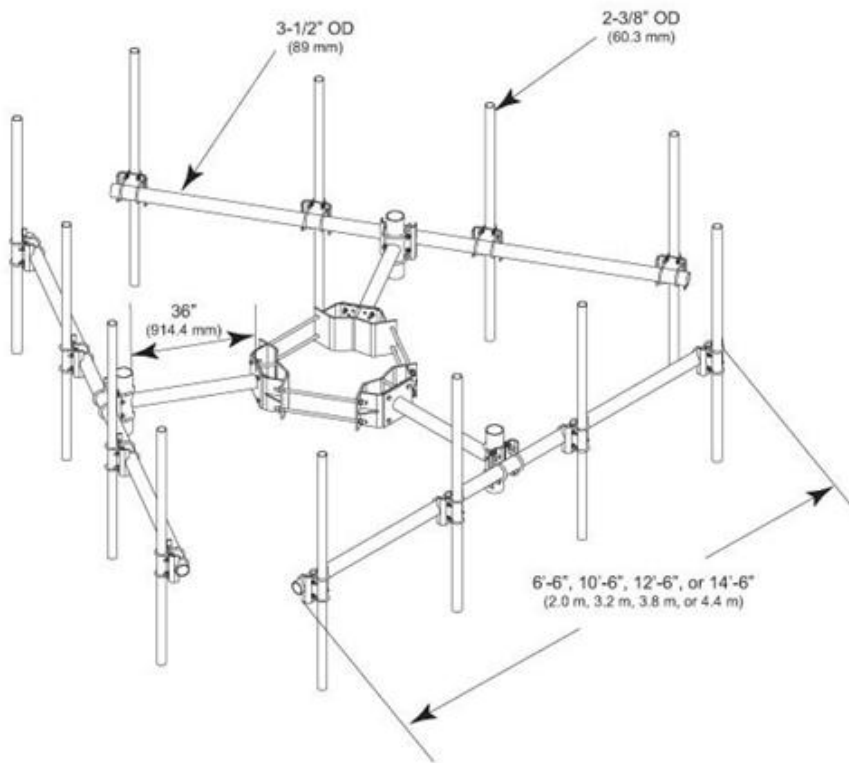
Product Type	Co-location t-frame kit
Pipe Length	2438.4 mm 96.0 in
Pipe, quantity	6
Includes	Cellular pipe frames Pipe mounts Ring mount Stand-off arms
Material Type	Hot dip galvanized steel
Mounting	Monopole, 762–1524 mm (30–60 in) OD
Package Quantity	1
Sectors, quantity	3
Stand-off Distance	914.4 mm 36.0 in

MC-K12L-6-96

POWERED BY



Outline Drawing



Regulatory Compliance/Certifications

Agency	Classification
ISO 9001:2008	Designed, manufactured and/or distributed under this quality management system

Included Products

MT-651-96 — Plain End Pipe, 2-3/8 in OD x 96 in

MT-219-H — Pipe Mount Hardware Kit

MC-K12L-B — Monopole Co-location T-Frame Kit, 30 in to 60 in OD, 12 ft face

- MT-216-NS — Cellular Pipe Frame, 12 ft face
- MT-197 — Single Support Arm, 36 in, includes pipe
- MC-RM3060-3 — Universal Ring Mount, 30 in to 60 in OD

* Footnotes

EPA with 1/2 in (12 mm) radial ice	EPA—Effective Projected Area
EPA without ice	EPA—Effective Projected Area

Product Specifications

COMMScope®

MC-K12L6-96

POWERED BY



Man Rating

BWS—Base Wind Speed

Wind Rating

BWS—Base Wind Speed; FBC—Florida Building Code